

DUTY TO COOPERATE STATEMENT

Joint Local Plan

Submission Version



Contents

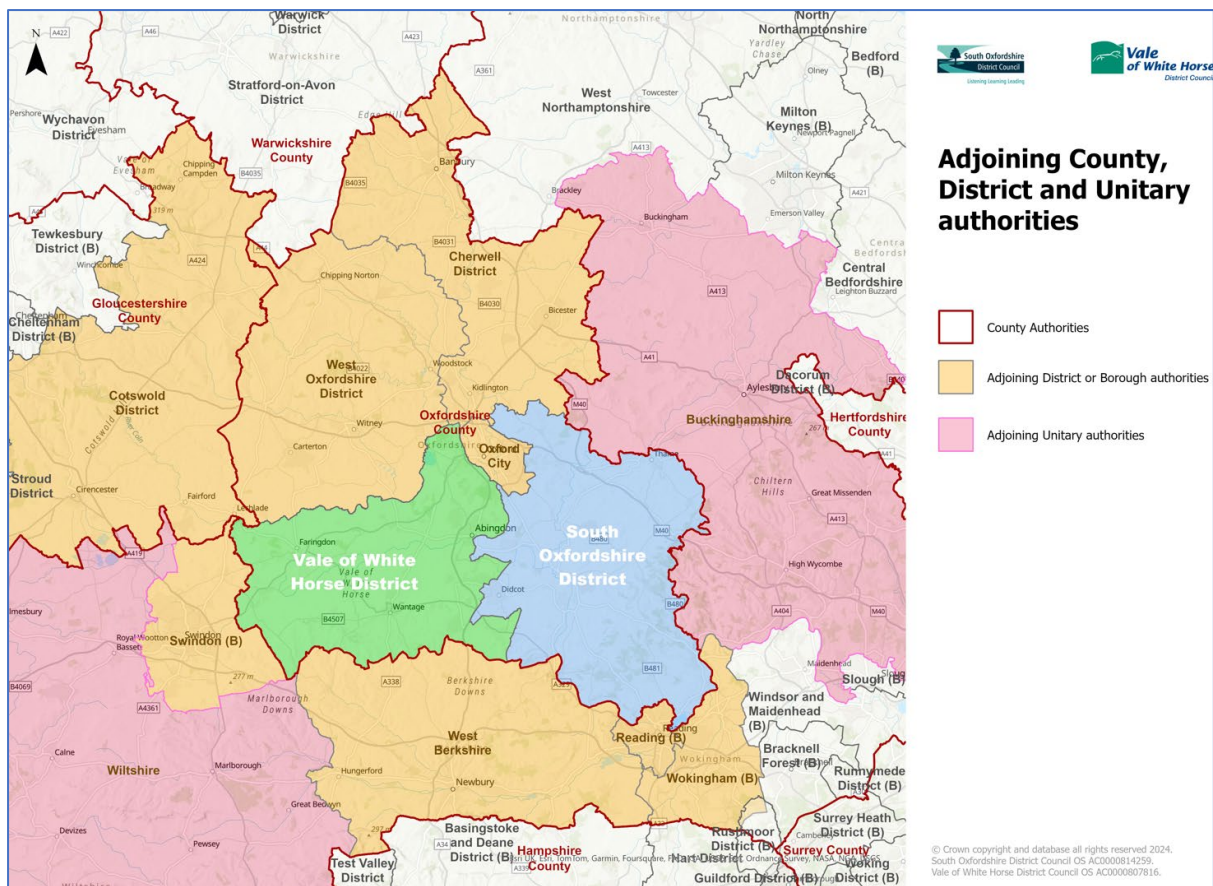
1 Introduction	2
South Oxfordshire and Vale of White Horse Context	2
Why do we have a Duty to Co-operate?	3
Who do we Co-operate with?	4
What are strategic planning matters?	5
What are Statements of Common Ground?	6
2 Engagement on strategic planning matters	7
Buckinghamshire	7
Oxfordshire	8
Cherwell	16
Wokingham	17
Reading.....	18
West Berkshire.....	20
Wiltshire	21
Swindon	22
Gloucestershire	23
Cotswolds	23
West Oxfordshire	24
Oxford City	24
3 Engagement	30
APPENDIX 1	61
APPENDIX 2	76
APPENDIX 3	80

1 Introduction

South Oxfordshire and Vale of White Horse Context

- 1.1 South Oxfordshire District Council and Vale of White Horse District Council ('South and Vale') are jointly producing a new Joint Local Plan for 2041 to cover both districts. This Duty to Co-operate statement is published in December 2024 at the time of the submission of the Joint Local Plan for examination.
- 1.2 This statement records how we have engaged with the required bodies and other organisations in the preparation of the draft Joint Local Plan, and how we comply with the Duty to Co-operate.
- 1.3 The Councils have engaged with the necessary authorities, prescribed bodies and other organisations in the preparation of the draft Joint Local Plan so far as it relates to **strategic matters** through formal joint working, commissioning shared evidence, various types of meetings, and engaging in other partnership working.
- 1.4 We have also engaged under the Duty to Co-operate with other neighbouring Councils, organisations and bodies to help resolve strategic matters relating to their own strategies, plans and priorities, and we will be preparing separate Statements of Common Ground (SOCG) with councils and bodies.
- 1.5 South and Vale Councils form the southernmost parts of the County of Oxfordshire¹.

¹ An interactive map produced by the Government, showing a map of Councils in England and Wales is available through this link: [Map of councils in England - Google My Maps](#)



- 1.6 Within Oxfordshire, we work closely with our neighbours in Cherwell District, Oxford City and West Oxfordshire and with Oxfordshire County Council. We have all signed up to the Oxfordshire Strategic Vision², which is Oxfordshire’s long-term vision for sustainable development, and a guide for the development of our plans.
- 1.7 We also share physical boundaries with the authorities of the Cotswolds, Buckinghamshire, Gloucestershire, Reading, Swindon, West Berkshire, Wiltshire and Wokingham.

Why do we have a Duty to Co-operate?

- 1.8 [Section 33A\(6\) of the Planning and Compulsory Purchase Act 2004](#) made the Duty to Co-operate a legal requirement.
- 1.9 Local planning authorities remain under a Duty to Co-operate with **each other**, and with other **prescribed bodies**³, on **strategic matters** that cross administrative boundaries. The Duty to Co-operate requires us to engage constructively, actively and on an ongoing basis to maximise the effectiveness

² Future Oxfordshire Partnership (May 2021) Oxfordshire's Strategic Vision for Long-Term Sustainable Development, available at: <https://www.futureoxfordshirepartnership.org/a-vision-for-oxfordshire>

³ The bodies prescribed for the purposes of section 33A(1)(c) of the Act, as set out in The Town and Country Planning (Local Planning) (England) Regulations 2012 (as amended)

of development plan documents in relation to **strategic planning matters**. Regulation 4 of the Town and Country Planning (Local Planning) (England) Regulations 2012 (as amended) specifies which bodies this duty applies to'.

- 1.10 We need to demonstrate at examination of the Joint Local Plan that it would be reasonable for the examining Inspector(s) to conclude that the Duty to Co-operate has been complied with in the preparation of the plan so far as it concerns **strategic matters**.
- 1.11 Importantly, South and Vale have agreed to prepare a Joint Local Plan together as neighbouring authorities, which is permitted by [section 28 of the Planning and Compulsory Purchase Act 2004](#). A Joint Local Plan will be especially helpful where existing planned development sites straddle the district boundary, such as at Didcot.
- 1.12 The previous government planned to replace the Duty to Co-operate with an 'alignment test'. The Levelling-up and Regeneration Act 2023 will revoke the Duty to Co-operate, but at the time of the approval of the Joint Local Plan Regulation 19 Publication version, the new government has confirmed it plans to keep and strengthen the duty, proposing new mechanisms for cross boundary strategic planning. The duty remains in place and needs to be complied with.

Who do we Co-operate with?

- 1.13 All of our neighbouring Councils where South or Vale share a physical boundary include:

- Buckinghamshire Council;
- Cherwell District Council;
- Cotswolds District Council;
- Gloucestershire County Council;
- Oxford City Council;
- Oxfordshire County Council;
- Reading Borough Council;
- Swindon Borough Council;
- West Berkshire District Council;
- West Oxfordshire District Council;
- Wiltshire Council;
- Wokingham District Council.

- 1.14 The Duty to Co-operate 'prescribed bodies' include:

- The Environment Agency;
- Historic England;
- Natural England;

- The Civil Aviation Authority;
- Homes England;
- Buckinghamshire, Oxfordshire and Berkshire West Integrated Care Board;
- The National Health Service Commissioning Board (NHS England);
- The Office of Rail and Road;
- The Highways Authority (Oxfordshire County Council);
- National Highways.

1.15 We are also required to proactively engage with other partnerships as part of the preparation of the Local Plan. These include:

- Oxfordshire Local Enterprise Partnership (abolished during the plan-making process with support withdrawn from April 2024 and in our case now hosted within Oxfordshire County Council);
- Oxfordshire Local Nature Partnership (LNP).

What are strategic planning matters?

1.16 Strategic matters are concerned with sustainable development, use of land or infrastructure that has, or would have a significant impact on, at least two planning areas. Not every cross-boundary issue will have such impacts, and, in the first instance, it is for the plan-making authority to make an evaluative judgment as to whether any **strategic matters** (as defined) would arise from the proposed plan (either because of the development it proposes or because of relevant matters that it fails to address).

1.17 The strategic planning matters are not prescribed, and authorities will have specific strategic planning matters relative to their issues in their area.

1.18 South and Vale first identified and consulted upon some potential strategic matters during the first Joint Local Plan issues consultation stage (Regulation 18 Part 1), and these strategic matters that related to our anticipated Joint Local Plan's impacts were:

1. Addressing climate change;
2. Provision of infrastructure;
3. Conserving and enhancing our natural and historic environments;
4. Continuing to meet the existing agreed Unmet Need of Oxford City;
5. Joint evidence base.

1.19 After reviewing the feedback that we received during the Joint Local Plan consultation issues stage consultation, we proposed some edits to the potential strategic matters which were presented and consulted upon at the Preferred options (Regulation 18 Part 2) stage, and these have remained consistent since that time. Whilst these topics have the potential to give rise to strategic matters, and so have featured in our discussions with our neighbours and with

prescribed bodies, the Duty only applies directly to actual **strategic matters**, i.e. matters concerned with sustainable development, uses, and infrastructure, that **have or would have significant impacts on at least two planning areas**. This is to be assessed primarily by reference to the evidence base that has been prepared for the JLP but will also include consideration of any evidenced matters raised by other parties in the preparation of the JLP.

1.20 Our Joint Local Plan potential strategic matters include:

1. **Housing need and supply, including affordable housing, and the provision of sites for Gypsies and Travellers;**
2. **The supply of retail and employment land;**
3. **The provision of infrastructure, including health, education, utilities, flood risk and strategic sustainable transport links;**
4. **Conserving and enhancing our natural and historic environments;**
5. **Addressing climate change;**
6. **Joint evidence base.**

1.21 Our Joint Local Plan confirms that South and Vale have no unmet housing need or specialist housing needs which we need to ask neighbours to accommodate, and also no unmet employment need or unmet retail need arising from our evidence.

1.22 Discussions with others about the Joint Local Plan have generally related to the potential strategic matters, as well as any neighbouring authority's Local Plan development. No cross-boundary development is generated by the Joint Local Plan (other than between South and Vale themselves, for example at Didcot).

What are Statements of Common Ground?

1.23 South and Vale have been guided by the potential strategic matters in paragraph 1.20 to determine what to engage on and discuss with other neighbouring Local Authorities in the preparation of the JLP.

1.24 To demonstrate effective and ongoing joint working, we are preparing Statements of Common Ground (SOCG) with the Oxfordshire authorities. We have prepared a Joint Oxfordshire Statement of Common Ground to focus on the South and Vale Joint Local Plan.

1.25 We have also prepared bilateral SOCG with any relevant neighbouring authorities or prescribed bodies who wished to do so.

1.26 We are preparing SOCG with other prescribed bodies and some remaining neighbouring authorities who wish to prepare a statement about the Joint Local Plan content as the examination progresses. These include Oxford City Council, Natural England, the Environment Agency, Reading Borough Council

and West Oxfordshire District Council. Thames Water is a non-prescribed body, but they have also agreed to prepare a SOCG with us.

2 Engagement on strategic planning matters

- 2.1 This section of the statement explains what we have done to ensure that the Joint Local Plan (JLP) has been prepared with all necessary engagement on strategic matters explained in section 1, and other engagement with our Duty to Co-operate partners. Engagement and discussions with those partners has gone wider than just the issues that would directly fall within the **strategic matters** where engagement is required. In considering whether the Duty has been met, it should not be assumed that simply because there has been engagement or discussion about cross-boundary matters, that the subject matter therefore amounts to a **strategic matter**. In all cases it is necessary to consider whether the subject matter involves sustainable development, uses, or infrastructure and, if it does, whether the way in which it is dealt with by the JLP (either by its proposals or by its lack of proposals) would give rise to **significant impacts on two or more planning areas**.

Buckinghamshire

- 2.2 Buckinghamshire Council is a unitary authority with a shared border to the north and east of South Oxfordshire District. There are often shared matters regarding services and facilities in key towns and at railway stations along this boundary, with the geography meaning that residents at some of our settlements like Thame and Chinnor, which are located close to the county boundary, look to higher order services in Buckinghamshire (Aylesbury, Princes Risborough, Marlow) and benefit from nearby Haddenham Railway station. There are no significant cross boundary strategic matters emerging from the JLP.
- 2.3 Buckinghamshire Council has engaged with the South and Vale Joint Local Plan, although at Regulation 18 (part 2) stage they commented that they did not see a need to hold a meeting about the contents or to engage with us to prepare a Statement of Common Ground.
- 2.4 South and Vale engaged on the Buckinghamshire Local Plan Duty to Co-operate Draft Scoping Matrix Consultation in early 2021. Buckinghamshire held a Vision and Objectives consultation in June 2023, and following review, South and Vale determined that no comments were necessary.
- 2.5 South and Vale JLP has no disputed significant strategic matters with Buckinghamshire Council related to the Duty to Co-operate. South and Vale updated Buckinghamshire to alert to the updated timetable for the JLP in the

Local Development Scheme in September 2024, inviting engagement on our Regulation 19 JLP. Buckinghamshire submitted a Regulation 19 response to the JLP. Buckinghamshire questioned the availability of the Gypsy and Traveller Accommodation Needs Assessment and the effectiveness of the related JLP policy HOU10. South and Vale will share the outputs of that study with Buckinghamshire now that findings are known. Taking account of the supply of gypsy and traveller sites, there is no unmet need for gypsies and travellers, and this matter does not result in impacts on any adjoining Local Authority area.

Oxfordshire

- 2.6 This section considers engagement with Oxfordshire County Council as well as engagement with all Oxfordshire Authorities collectively on matters related to all of Oxfordshire.
- 2.7 There is a requirement to align with the plans prepared at local and county level, including the Minerals and Waste Plan prepared by the County Council.

Oxfordshire Plan 2050:

- 2.8 The Oxfordshire Plan 2050 was a voluntary joint statutory spatial plan, being jointly prepared by the five local planning authorities in Oxfordshire.
The Oxfordshire Plan was being developed by consensus, with officers and elected members, from all the Oxfordshire authorities and OxLEP.
- 2.9 It was intended to provide a long term, strategic planning framework for Oxfordshire. It was also intended that it would set out the level of growth to be delivered and the spatial strategy for the distribution of growth in Oxfordshire to 2050. It would have included some strategic planning policies. The Oxfordshire Plan would have formed part of each authority's development plan, providing a strategic planning framework for local plans and decision-making on development proposals.
- 2.10 A core team was established to co-ordinate the production of the Oxfordshire Plan, which included officers seconded from Oxfordshire's Councils and Oxfordshire County Council.
- 2.11 The methodology for the next stage of the Oxfordshire-wide housing needs assessment (the OGNA update) was a key element of disagreement during the production of the Oxfordshire Plan. At an Oxfordshire Plan Leaders Workshop on 2 August 2022, it became clear that we were going to be unable to find agreement on the approach to the level of housing that we needed to plan for over the period to 2050. Prior to this, Oxfordshire's City and District Councils were engaging constructively, actively and on an ongoing basis with each other, Oxfordshire County Council and OxLEP to maximise the effectiveness of the Oxfordshire Plan in addressing cross-boundary strategic planning matters.

- 2.12 From August 2022 onwards, the forward planning of strategic matters such as housing need would become the responsibility of each Local Plan.
- 2.13 South and Vale recognised that the JLP needed to change its scope to include the strategic aspects which the Oxfordshire Plan would no longer do. We also ensured that we had processes in place during the JLP development to ensure the JLP could reach agreements with a sound approach, and that we could meet the requirements of the Duty to Co-operate.

Minerals and Waste (Oxfordshire County Council):

- 2.13 Oxfordshire County Council provides support and ongoing engagement in the development of minerals and waste policy and other minerals related issues on specific sites which have greatly assisted the development of policies in the JLP. Oxfordshire County Council have shaped the development of relevant JLP policies throughout the Regulation 18 consultations and through informal meetings and emails. The Regulation 19 submission from the County Council asks for some minor clarifications. Minerals and waste is a matter which is included in the Oxfordshire County Council and South and Vale SOCG, with the County Council supporting the soundness of relevant policies in the JLP.
- 2.14 South and Vale are awaiting engagement on the next draft consultation on the Oxfordshire Minerals and Waste Plan, and we anticipate receiving updates on this through the Oxfordshire Planning Policy Officers group (OPPO).

Future Oxfordshire Partnership (formerly the Oxfordshire Growth Board):

- 2.15 FOP's purpose is to deliver the [Strategic Vision for Sustainable Development in Oxfordshire](#) which all six councils adopted in 2021, and to:
- Coordinate local efforts to manage economic, housing and infrastructure development in a way that is inclusive and maximises local social and environmental benefits;
 - Support the development of local policy that meets the UK Government's stated aim of net zero carbon by 2050, and contributes towards biodiversity gain whilst embracing the changes needed for a low carbon world; and
 - Seek to secure funding in the pursuit of these aims and oversee the delivery of related work programmes delegated to it by the joint committee's constituent local authority members.
- 2.16 FOP meets six times a year to discuss local issues, often in a non-decision-making capacity. It is supported by four Advisory Sub-Groups (Infrastructure, Environment, Housing and Planning), a Scrutiny Panel and a small team of officers who are tasked with delivering on elements of the Partnership's work programme, and South and Vale has contributed to and attended these groups throughout the JLP production. It is responsible for both decisions about how Oxfordshire Housing and Growth Deal money is spent and for overseeing the

work undertaken to deliver the agreed outcomes. Importantly, FOP was the vehicle for agreeing the Housing and Growth Deal, plus the previous work on the Oxford City unmet need and it initiated the work on the Oxfordshire 2050 Plan. A review of FOP is underway, with new terms of reference planned for January 2025.

Oxfordshire County Council Lead Local Flood Authority:

2.17 Flood risk and drainage policies in the JLP recognise that major developments need to comply with the latest local standards and guidance for surface water drainage which is produced by the Lead Local Flood Authority (Oxfordshire County Council). Engagement with the County Council on draft policy text prior to the Regulation 18 consultation and to feed into the Regulation 19 version has taken place effectively. At the JLP Regulation 19 stage the County Council requested some modifications relating to flood risk modelling which South and Vale did not agree were soundness concerns for the JLP. Flooding is a matter which is included in the Oxfordshire County Council and South and Vale SOCG.

Education

2.18 Liaison with Oxfordshire County Council throughout the preparation of the plan has ensured that the JLP recognises and plans for the additional school places needed as a result of anticipated population growth. Sites for new schools are also identified in the JLP where appropriate. At the Regulation 19 stage the County Council suggested minor modifications to the JLP. South and Vale did not believe that those modifications were necessary for soundness. Education is a matter which is included in the Oxfordshire County Council and South and Vale SOCG.

Strategic reservoir:

2.19 Oxfordshire County Council, Vale and South share concerns about the issues arising from Thames Water's proposal for a strategic reservoir.

2.20 The proposal has been defined as a Nationally Significant Infrastructure Project (NSIP) so it will be considered through a process led by the Planning Inspectorate which the parties intend to engage with.

2.21 The matter is regularly discussed at liaison meetings between Vale, South and Oxfordshire County Council as the proposal progresses. There has been regular engagement on Policy IN7 and the safeguarding of the land for the reservoir with Oxfordshire County Council throughout the JLP process. The

strategic reservoir is a matter which is included in the Oxfordshire County Council and South and Vale SOCG.

Healthy Places:

- 2.22 The Oxfordshire Health Impact Assessment Toolkit was approved by the Future Oxfordshire Partnership in January 2021 for use by all six Oxfordshire Local Authorities. A Health Impact Assessment (HIA) is a tool used to identify the health impacts of a plan or project and to develop recommendations to maximise the positive impacts and minimise the negative impacts, while maintaining a focus on addressing health inequalities. By bringing such health considerations to the fore, HIAs add value to the planning process.
- 2.23 South and Vale regularly attend an Oxfordshire based Healthy Place Shaping working group which has helped shape the approach taken in the JLP, and has ensured alignment with Oxfordshire strategic health aims.
- 2.24 Oxfordshire County Council has shaped the development of relevant JLP policies throughout the Regulation 18 consultations and through informal meetings and emails. The Regulation 19 submission from the County Council asked for some modifications to ensure the requirements for Health Impact Assessments are applied appropriately, but South and Vale disagree that these modifications are appropriate or necessary for soundness. Healthy places is a matter which is included in the Oxfordshire County Council and South and Vale SOCG.

Oxfordshire Infrastructure Strategy (OxIS):

- 2.25 The Oxfordshire Infrastructure Strategy (OxIS)⁴ was commissioned by the Future Oxfordshire Partnership in 2017, involving the county's six local authorities and Oxfordshire Local Enterprise Partnership, intending to help prioritise our infrastructure requirements, projects and investments to inform local plans to 2040 and beyond. A Planning Policy Officer sits on the working group. All Oxfordshire authorities were involved in the initial stages of OxIS and continue to work together on the next stage of OxIS which has been commissioned through the Future Oxfordshire Partnership.

Oxfordshire Local Industrial Strategy and Investment Plan:

⁴ City Science (2021) [Oxfordshire Infrastructure Strategy \(OxIS\) | Stage 1 \(2021-2040\)](https://mycouncil.oxfordshire.gov.uk/documents/s59484/CA_FEB1522R08%20Annex%201a%20-%20OxIS%20Stage%201%20Summary%20Report.pdf), available at: https://mycouncil.oxfordshire.gov.uk/documents/s59484/CA_FEB1522R08%20Annex%201a%20-%20OxIS%20Stage%201%20Summary%20Report.pdf

2.26 The Oxfordshire Local Industrial Strategy (LIS)⁵ was published in July 2019, and in August 2020 the LIS was accompanied by the Oxfordshire Investment Plan⁶. This was prepared in partnership and led by the Oxfordshire Local Enterprise Partnership.

2.27 The LIS was underpinned by three guiding principles:

- Invest in Oxfordshire, deliver for the UK - Ideas, products and service innovation can create jobs across the country, reinforcing Oxfordshire's position as a net contributor to the UK.
- Oxfordshire – the UK's 'innovation engine' - No other part of the UK has the breadth and depth of assets, knowledge capability, skills and business capacity – making Oxfordshire a leading location for investment in the UK.
- Global Oxfordshire, Global Britain - The key sectors and technologies that we excel in has global reach, meaning we are a critical driver for UK economic growth post-Brexit.

2.28 The LIS makes clear that Oxfordshire should enable greater connectivity and accessibility, especially across key growth locations. This has been reflected in the spatial strategy of the Joint Local Plan, which supports delivery of outstanding allocations with the well-advanced plans for infrastructure to go with them, and supports our garden communities and Science Vale as key locations for development up to 2041. Oxfordshire's critical assets that sit within South and Vale are also supported by the Joint Local Plan, with ambitions for their growth or re-development.

Oxfordshire Housing and Growth Deal:

2.29 The Oxfordshire Housing and Growth Deal was signed in 2018 by all Oxfordshire Councils and the Oxfordshire Local Enterprise Partnership, and it was also approved by central government. The deal was for £215 million in exchange for the planning and delivery of 100,000 homes in the County. The last round of Local Plans achieved this milestone figure and the planned growth in the County slightly exceeds this target. Our Joint Local Plan covers the overlaps with some of the time periods over which these homes will need to be delivered, therefore the Oxfordshire Growth Deal remains relevant for us to consider. An aligned approach with other Oxfordshire authorities and the County Council (who administer the Growth Deal), is needed so that we all

⁵ HM Government (July 2019) Oxfordshire Local Industrial Strategy, available at: https://www.oxfordshirelep.com/sites/default/files/uploads/Oxfordshire-SINGLE-PAGE_1.pdf

⁶ HM Government (August 2020) The Investment Plan – Oxfordshire's Local Industrial Strategy, available at: https://www.oxfordshirelep.com/sites/default/files/uploads/The%20Oxfordshire%20Investment%20Plan%20-%20August%202020_0.pdf

meet our duties consistently. Our JLP approach reflects the continued importance of the Growth Deal, and this is evident in our consideration of the Growth Deal in determining what our proposed housing requirement should be.

Oxfordshire Gypsies and Travellers:

2.30 We have undertaken a study jointly with the other Oxfordshire authorities to identify the accommodation needs for Gypsies, Travellers, Travelling Showpeople and Boat Dwellers (GTAA) over the plan period. This assessment tells us the number of pitches or plots each council needs to identify in their local plan. There are no resulting strategic matters relating specifically to gypsies and travellers to be resolved jointly. The JLP does not identify any unmet need for travelling communities.

Meeting employment needs:

2.31 Employment Strategy has been a regularly featured item for OPPO agendas. Through OPPO, Oxfordshire authorities and OxLEP (now part of the County Council) have engaged on some employment strategy matters such as Community Employment Plans and the Circular Economy.

2.32 Our Policy JT1 has taken account of both the Oxfordshire Local Industrial Strategy and the Oxfordshire Strategic Vision.

2.33 The employment need requirements in South and Vale and the sector requirements that are evidenced in our Employment Land Needs Assessment can be met within South and Vale.

2.34 The supply of employment land and premises exceeds the projected future demand for employment. This is a healthy position for the market to function efficiently and to allow effectively for churn, choice and flexibility. Employment need is met and the JLP does not propose significant new needs arising for employment, nor are there significant new employment allocations in the JLP, there are therefore no wider employment strategy impacts beyond South and Vale. We have no requests for unmet employment need from other Oxfordshire authorities, nor does the JLP generate unmet employment needs.

Pathways to a Zero Carbon Oxfordshire:

2.35 Pathways to a Zero Carbon Oxfordshire⁷ was published in 2021, and it was prepared and funded with a consortium of key stakeholders in Oxfordshire including the Local Authorities, with the aim of examining how Oxfordshire can sustain the momentum of the last decade to achieve net-zero emissions. South and Vale have a dedicated Climate Action team with officers sitting on PaZCO

⁷ ECI and Bioregional (2021) Pathways to a Zero Carbon Oxfordshire (PaZCO), available at: www.eci.ox.ac.uk/sites/default/files/2022-09/PazCo-final.pdf

working group. The PaZCO reports recommends Solar PV as being Oxfordshire's largest renewable energy generation resource and stresses the importance of increased energy storage capacity to bridge seasonal gaps and provide grid flexibility. We recognise that Solar PV will contribute significantly towards meeting our net zero targets, and therefore the Joint Local Plan supports it, alongside battery storage and a range of other renewable energy opportunities like hydro-power and potentially onshore wind (noting the landscape constraints). The JLP evidence has been developed to help identify and map suitable areas for these schemes to ensure they are situated in appropriate locations, and these are included on the Policies Map.

Housing and Employment Land Availability Assessments:

2.36 A joint methodology for undertaking Housing and Economic Land Availability Assessments (HELAAAs) consistently across Oxfordshire was jointly prepared by Cherwell District Council, Oxford City Council, South Oxfordshire District Council, Vale of White Horse District Council and West Oxfordshire District Council, working in partnership with Oxfordshire County Council. It was agreed in the joint methodology that Oxfordshire Authorities would engage with each other on the assumptions that we have made in our HELAAAs. In August 2023, South and Vale undertook a bespoke informal engagement with all Oxfordshire authorities, seeking comments or other feedback on the HELAA's density assumptions, employment assumptions and developable area assumptions which were included within our preparation of the South and Vale HELAA. Based on the joint methodology, South and Vale have collaborated to produce a HELAA covering both of our districts, matching the boundaries of the Joint Local Plan area.

Habitats Regulation Assessment:

2.37 Through OPPO and officer-led meetings with those responsible for District level HRAs and Natural England, we have been collaborating to ensure that our duties are discharged effectively with regards to the cumulative impacts of development in all of our adopted plans, and that effective testing of emerging plans takes place. The HRA has been progressing with collaboration to the best that Oxfordshire authorities can achieve, given their different stages of plan-making. The Oxfordshire authorities, led by the County Council, worked jointly on an Explanatory Note to consider air quality effects of their plans in combination with each other. The parties are continuing to engage jointly on scoping the next stages of assessment work.

Housing Infrastructure Fund (HIF):

2.38 The HIF1 for Didcot and surrounding areas is a major infrastructure project with a deal with Government. The funding has been combined with investment from Homes England and the Oxfordshire LEP and is fundamental to the delivery of

homes in Didcot and the wider area. The permission for the HIF1 schemes is awaiting a decision from the Secretary of State following a Public Inquiry in Spring 2024.

Social Care:

2.39 Policy HOU5 of the JLP requires developers to provide 'housing with care units' on certain sites. The County Council have been engaged with the emerging evidence informing HOU5, and South and Vale have been keen to ensure consistency with that evidence and the approaches taken to the evidence in development on need by Oxfordshire County Council. Both studies have been completed to inform policy development. The County Council's Regulation 19 representation on Policy HOU5 recommends a working agreement between the Councils is established to explain how affordable extra care housing will be provided, as well as other modifications. South and Vale do not agree that these are necessary for soundness and think that the working arrangement proposed can continue to be engaged upon. Social Care is a matter which is included in the Oxfordshire County Council and South and Vale SOCG.

Transport:

2.40 Transport matters related to the JLP are included in the SOCG with Oxfordshire County Council and also the wider SOCG with National Highways and Oxfordshire County Council with regards to strategic highways matters.

2.41 There is an Oxfordshire-wide suite of County Council prepared transport strategies and plans. The JLP aligns with those plans.

2.42 Oxfordshire is also part of England's Economic Heartland (EEH) - a strategic collaborative partnership, stretching from Swindon to Cambridgeshire and from Northamptonshire to Hertfordshire, with a shared commitment to realise the region's economic potential while achieving net-zero carbon. EEH is the sub-national transport body for the region, with a transport strategy that establishes a 30 year strategic vision for the region's transport system. EEG also works with delivery partners to identify investment priorities, secure funding and deliver schemes.

2.43 The County Council's Regulation 19 representation to the JLP includes transport comments with support given for the JLP and also common ground about the JLP alignment with the Oxfordshire Local Transport and Connectivity Plan.

Nature:

2.44 The County Council is leading on the Oxfordshire Local Nature Recovery Strategy (LNRS). The JLP reflects that this LNRS is in development, and South

and Vale are committed to further engagement to ensure the strategy is implemented appropriately in the local plans once the LNRS is adopted.

Cherwell

2.45 Please see the Oxfordshire-wide commentary above for other relevant matters related to Cherwell District Council.

2.46 Cherwell District is located to the north of South and Vale within the same county of Oxfordshire. South and Vale have very good engagement with Cherwell, which is structured and led mostly through the Oxfordshire Planning Policy Officers (OPPO) group. There has also been effective informal information sharing and support between officers particularly on the Habitats Regulation Assessment coordination, Green Infrastructure and transport, with engagements and responses to each other's formal consultations as necessary.

2.47 Cherwell responded to the Regulation 18 versions of the JLP.

2.48 South and Vale met with Cherwell on 15 October 2024 to review the Regulation 19 version of the JLP and discuss the issues Cherwell raised at Regulation 18 stages. We also discussed emerging plans for Cherwell's Regulation 19 Local Plan and reflected on South and Vale's position at the Cherwell Local Plan Regulation 18 stages. Based on the conclusions of the Oxford Local Plan Inspectors⁸ (see Oxford heading below for more information about this), Cherwell District Council will no longer be reliant on the HENA study to inform its housing and employment needs, which South and Vale previously objected to at Cherwell's Regulation 18 stages. Cherwell deciding to not rely on the HENA was agreed to be a positive step and that we would be unlikely to have concern about alignment of Cherwell's housing need evidence in their emerging plan with the JLP.

2.49 Cherwell's emerging Local Plan Regulation 19 was discussed with Oxford prior to its approval. Oxford and Cherwell have an agreed position on Oxford's unmet needs. Cherwell do not consider that they need to accommodate additional housing need for Oxford in their emerging Local Plan, and they also have recently agreed that point with Oxford, with no additional accommodation being sought by Oxford within Cherwell (as confirmed in a recent Cherwell Interim Duty to Co-operate Statement). Cherwell's Regulation 19 position also aligns with South and Vale's position.

⁸ The Planning Inspectorate (11 September 2024) Letter: Examination of the Oxford Local Plan 2040, available at: <https://www.oxford.gov.uk/downloads/file/3600/exam-20---inspectors-post-hearings-letter-to-council-september-2024>

- 2.50 A SOCG between Cherwell and South and Vale has been prepared and submitted alongside the JLP.
- 2.51 South and Vale will continue to engage with Cherwell, and with Natural England on the Habitats Regulation Assessment matter which affects both authorities.

Wokingham

- 2.52 Wokingham Borough Council has a border to the east of South Oxfordshire District.
- 2.53 South and Vale have good engagement with Wokingham. There has been effective informal information sharing and support between officers, and formal meetings and responses as engagements as necessary.
- 2.54 Wokingham Borough Council is in the process of preparing a new Local Plan, known as the Local Plan Update. Wokingham formally wrote to many of its neighbours that have employment as a cross boundary strategic matter in October 2023, asking if they would be able to assist in meeting an anticipated unmet need for warehousing and industrial land arising from Wokingham Borough. Our JLP process and evidence on employment were not complete when we responded in November 2023, and we replied to Wokingham highlighting this, as well as responding that given our districts' distance, and understanding the functional relationship between our districts and the poor connectivity that exists between us, initially we do not believe that a reasonable option for meeting Wokingham's unmet need exists in our districts. We do not share a Functional Economic Market Area. We anticipated this as being a matter for the Wokingham Local Plan Update to resolve, which it has concluded upon in the Regulation 19 version of the Wokingham Local Plan update. Wokingham's Duty to Cooperate Statement⁹ concludes on this by explaining that commitments and completions data was available which set out the future supply of employment land, including warehousing/industrial floorspace. This showed that when the completions and committed supply were added to additional employment supply proposed in the Proposed Submission Plan, they are able to meet their 18ha need for warehousing/industrial floorspace, but they are not able to meet the higher aspirational figure of 53ha. It concludes stating that their Proposed Submission Plan provides for full employment needs meaning there are no unmet needs requiring engagement with other local authorities.
- 2.55 Wokingham also formally wrote to many of its neighbours in December 2023 asking if they would be able to assist in meeting the anticipated unmet need for gypsy and traveller provision arising from Wokingham Borough. With our JLP

⁹ Wokingham Borough Council (September 2024) Duty to Cooperate: Interim Statement of Compliance, available at: https://www.wokingham.gov.uk/sites/wokingham/files/2024-09/Reg_19_DtC_statement_vFinal_Redacted.pdf

process and evidence on gypsies and travellers not complete at that time, we replied to Wokingham highlighting this, as well as responding that given our districts' distance, and understanding the functional relationship between our districts and the poor connectivity that exists between us, initially we do not believe that a reasonable option for meeting Wokingham's unmet need for gypsy and traveller provision exists in our districts. South and Vale have no spare capacity to assist in Wokingham's gypsy and traveller need. We anticipated this would be being a matter for the Wokingham Local Plan Update to resolve, and it was resolved with needs proposed to be fully met in the Regulation 19 version of the Wokingham Local Plan update. We agreed to share the outcome of the Oxfordshire GTAA with Wokingham as soon as possible, and did so by sharing the findings on pitch needs for South and Vale in early December 2024.

- 2.56 In April 2024 Wokingham and South and Vale officers held a productive meeting to engage on the Joint Local Plan and Wokingham's emerging Local Plan. This followed contact made when the JLP Regulation 18 (part 2) was published. We discussed Local Plan timetables, an overview of evidence base, Wokingham's options and reasonable alternatives included those close to the borders, Wokingham's emerging preferred options, unmet needs for employment and gypsy and traveller pitches again, local energy standards, the third Thames crossing and our next engagement steps.
- 2.57 At the time of writing this statement, South and Vale JLP has a strategic cross boundary matter of the third Thames crossing with Wokingham. Although there remains a disagreement on this matter, there are no policy proposals in the JLP material to this location and it is not a significant Duty to Co-operate matter.
- 2.58 South and Vale updated Wokingham to alert to updated timetable for the JLP in the Local Development Scheme in September 2024, inviting engagement on our Regulation 19 JLP. Wokingham then informed South and Vale of their intention to do the same. Both of our Regulation 19 consultations launched within a few weeks of each other, and our planned submissions are also aligned within a few weeks. Both parties were sent links to each other's council papers, including each respective Regulation 19 versions. Wokingham submitted their Regulation 19 response to the JLP and likewise South and Vale submitted a Regulation 19 response to Wokingham. A Statement of Common Ground has been prepared and submitted with the JLP.

Reading

- 2.59 Reading Borough Council has a shared border to the South of South Oxfordshire.
- 2.60 South and Vale generally have productive engagement with Reading. There has been effective informal information sharing about Local Plans and

Reading's Local Transport Plan development, some formal meetings and responses as engagements as necessary.

- 2.61 Reading and South and Vale have had a fairly aligned timetable for Local Plan production, with Reading preparing their Local Plan Review for Regulation 19 engagement within weeks of South and Vale.
- 2.62 Formal engagement between Reading and South and Vale has focussed on housing and transport matters, with some discussion held on viability, climate change and Gypsies and Travellers.
- 2.63 There remains a disagreement about the need to safeguard a proposal for a new bridge crossing the River Thames north of Reading and provision of mobility hubs (park and ride etc). An outline business case for the crossing remains an aspiration for Reading, but it will be necessary to plan ahead for such a scheme or another alternative scheme to a crossing if the project is to progress. Although there remains a disagreement on this matter, there are no policy proposals in the JLP material to this location.
- 2.64 On housing need, Reading Borough Council wrote to neighbours on 23 August 2024 regarding potential unmet housing needs of Reading and the ability to accommodate unmet needs, should they arise. South and Vale responded formally on 17 September 2024 to confirm that we have remained engaged on their emerging evidence base so we understood the context of the request made. We also stated that need should be fully justified and if considered necessary within South and Vale, it would need to be explored through a joint exploration of alternatives. We also observed that both South and Vale's current adopted plan's spatial strategies and the emerging spatial strategy in our Joint Local Plan does not envisage significant growth near to Reading. This is because the area near to Reading has a number of physical, infrastructure and landscapes constraints in particular. Finally, we expressed that we will engage with Reading's forthcoming Regulation 19 publication Local Plan in due course, given that the request was premature, and we will confirm our stance to unmet need in this Duty to Co-operate statement or Statements of Common Ground if required.
- 2.65 South and Vale updated Reading to alert them about the updated timetable for the JLP in the Local Development Scheme in September 2024, inviting engagement on our Regulation 19 JLP. Reading Borough Council have reviewed their position with respect to the Regulation 19 version of the plan and submitted a representation. South and Vale are currently reviewing the Regulation 19 version of the Reading Local Plan. Reading and South and Vale have commenced the drafting of a Statement of Common Ground, which is expected to be signed imminently.

West Berkshire

- 2.66 West Berkshire is a unitary authority located to the south of both South and Vale districts and includes the town of Newbury. It is a lengthy shared boundary, and we therefore have many cross border spatial relationships, but no significant cross boundary strategic matters emerging from the JLP.
- 2.67 South and Vale generally have productive engagement with West Berkshire. There has been effective informal information sharing about employment evidence and a range of other planning matters which we share, some formal meetings about the Duty to Co-operate and responses and formal letters as engagements as necessary.
- 2.68 West Berkshire Local Plan is at examination at the time of this statement. Before West Berkshire Council's intervention by the Secretary of State to direct them to undertake the Local Plan examination, their Council had intended to consider withdrawing the Local Plan from the examination.
- 2.69 In January 2023 West Berkshire wrote to all authorities within one hour's drive of Newbury, with a formal request for assistance meeting an unmet need for office and industrial floorspace. Our JLP process and evidence on employment were not complete when we responded in March 2023 and we stated that we were not in a position to assist with unmet employment needs, before the submission of West Berkshire's Local Plan. The Councils' representatives met in March 2023 and we noted a possible offer from another authority to prepare a Statement of Common Ground to meet some of West Berkshire's unmet need for offices. West Berkshire then submitted that plan for examination.
- 2.70 In November 2023 we engaged on the West Berkshire Gypsy and Traveller Accommodation Assessment Development Plan and Call for Sites, but as a site-focussed consultation, we made no formal comments.
- 2.71 Nutrient neutrality is a shared matter for Vale and West Berkshire. The River Lambourn SAC is a globally rare chalk stream, of international importance for the conservation of biodiversity, but has been assessed as being in an unfavourable ecological condition. This unfavourable condition is primarily due to nutrient pollution (specifically phosphorus) from agriculture and sewerage. The River Lambourn SAC is located in West Berkshire, however part of the Vale of White Horse District falls within the River Lambourn SAC's hydrological catchment area. Therefore, the council is required by law to consider whether granting planning permission in this area would have an adverse impact on the River Lambourn SAC. Whilst this requirement may be removed if the situation improves, it is expected to remain in place for the foreseeable future. Policy NH1 responds to this matter by requiring that development within the River Lambourn SAC nutrient neutrality catchment area that would result in additional overnight accommodation, and any other development that could result in the input of additional nutrients within the identified catchment, must demonstrate

nutrient neutrality in relation to phosphorus. We have added the affected area to the Proposed Policies Map.

- 2.72 Pollution sources and receptors - The Joint Local Plan includes Policy CE10, which makes provisions for development proposals in proximity to the Harwell Nuclear Restoration Services (NRS). The Nuclear Restoration Services Harwell site located within the Vale of White Horse District, has a 3km Outer Consultation Zone (OCZ) set by the Office for Nuclear Regulation (ONR). This OCZ extends 3k from the perimeter of the site, which means that a portion of this 3km zone lies within the West Berkshire Council area. We have decided to exclude the part of the OCZ that lies within West Berkshire from our Proposed Policies Map because policies maps should only cover the Local Plan area that we have powers to make, but it is important to highlight its presence and cross-boundary nature and we have done that with West Berkshire. There are associated consultation requirements for development within this zone that can be found online [here](#).
- 2.73 At the time of writing this statement, South and Vale have no strategic matters relating to the JLP which are in dispute with West Berkshire, although progress on the West Berkshire Local Plan examination will need to be followed to ensure this remains the case from West Berkshire's perspective with their Local Plan.
- 2.74 Discussions about the matters of housing need, transport and environmental cross boundary matters will be continuously engaged upon.
- 2.75 South and Vale updated West Berkshire to alert them to the updated timetable for the JLP in the Local Development Scheme in September 2024, inviting engagement on our Regulation 19 JLP. West Berkshire District Council did not provide a formal response to the Regulation 19 version of the plan. South and Vale contacted West Berkshire during the Regulation 19 consultation on the JLP about the potential to prepare Statement of Common Ground but there are no current plans to commence one.

Wiltshire

- 2.76 Wiltshire Council is a Unitary Authority which shares a very short border to the south-east of Vale of White Horse District near Swindon.
- 2.77 Given the very short border and historically less cross boundary implications from plan making, we have proportionally less formal engagement on shared cross boundary issues with Wiltshire. There has been effective informal engagement on cross boundary matters which we share, some workshop attendances and also formal responses as engagements as necessary. There are no significant cross boundary strategic matters emerging from the JLP

- 2.78 We have engaged together on the Oxfordshire Gypsy and Traveller Accommodation Assessment and the Wiltshire Gypsy and Traveller Development Plan Document, attending consultation workshops on both programmes of work, although Wiltshire is working via a slightly later timetable.
- 2.79 In November 2023 South and Vale last engaged on the Wiltshire Local Plan, with a formal response to their Regulation 19 period. We noted that there were no unmet need issues arising from their emerging plan and no other shared strategic matters to resolve. We therefore had no formal consultation responses to make. Wiltshire have recently submitted this plan for examination in December 2024.
- 2.80 At the time of writing this statement, South and Vale have no strategic matters with Wiltshire related to the JLP. South and Vale updated Wiltshire to alert them to the updated timetable for the JLP in the Local Development Scheme in September 2024, inviting engagement on our Regulation 19 JLP. Wiltshire did not submit a response to the Regulation 19 version of the plan. South and Vale contacted Wiltshire during the Regulation 19 consultation on the JLP about the potential to prepare a Statement of Common Ground but there are no current plans to commence one.

Swindon

- 2.81 Swindon Borough Council has a shared boundary with Vale of White Horse to the west of the Vale.
- 2.82 South and Vale have very productive engagement with Swindon. Most engagement is structured in regular formal Planning Liaison meetings, including officers from Oxfordshire County Council. There has been effective informal information sharing about Local Plans, housing need evidence, Oxfordshire GTAA and transport evidence bases, also some formal responses as engagements as necessary. South and Vale attended a stakeholder engagement workshop and commented on Swindon's emerging evidence on housing need in November 2023 and reviewed Swindon's draft Local Plan scoping report in February 2024. Our consultants preparing our Housing Needs Assessment have engaged Swindon in preparing the evidence on local housing needs for the JLP.
- 2.83 At the time of writing this statement South and Vale have no strategic matters in dispute with Swindon relating to the JLP. The strategic matters of housing need, employment and transport are relevant to continue to engage upon as Swindon's own plan progresses. South and Vale updated Swindon to alert them to the updated timetable for the JLP in the Local Development Scheme in September 2024, inviting engagement on our Regulation 19 JLP. Swindon did not respond to the JLP Regulation 18 (part 2) or Regulation 19 consultations. A

Statement of Common Ground has been prepared and submitted with the JLP confirming there are no matters in dispute.

Gloucestershire

- 2.84 Gloucestershire County Council has a small shared border with Vale of White Horse District's western boundary near Swindon. There are no significant cross boundary strategic matters emerging from the JLP.
- 2.85 Gloucestershire County Council have engaged with the South and Vale Joint Local Plan and confirmed at Regulation 18 (part 2) and Regulation 19 stages that they had no comments to make. South and Vale similarly have no strategic matters with regards to the Gloucestershire Minerals and Waste Plan.
- 2.86 At the time of writing this statement, South and Vale have no disputed strategic matters with Gloucestershire County Council. South and Vale updated Gloucestershire to alert them to the updated timetable for the JLP in the Local Development Scheme in September 2024, inviting engagement on our Regulation 19 JLP. South and Vale contacted Gloucestershire during the Regulation 19 consultation on the JLP about the potential to prepare Statement of Common Ground but there are no current plans to commence one.

Cotswolds

- 2.87 Cotswold District Council has a small shared border with Vale of White Horse West boundary near Swindon. There are no significant cross boundary strategic matters emerging from the JLP.
- 2.88 Cotswold District Council have engaged with the South and Vale Joint Local Plan but did not comment at Regulation 18 (part 2) stage or Regulation 19 stage.
- 2.89 South and Vale engaged on the Cotswold Local Plan update Regulation 18 (part 1) in 2022 and more recently their Regulation 18 (part 2) in February – March 2024, noting that preparation is at an early stage. We responded to their plan commenting on their choice of spatial options which support Cotswold's ambition of 'green to the core values', which align well with South and Vale's JLP vision.
- 2.90 At the time of writing this statement, South and Vale have no disputed strategic matters with Cotswold District Council in relation to the JLP. South and Vale updated Cotswold District Council to alert them to the updated timetable for the JLP in the Local Development Scheme in September 2024, inviting engagement on our Regulation 19 JLP. South and Vale contacted Cotswold District Council during the Regulation 19 consultation on the JLP about the

potential to prepare a Statement of Common Ground but there are no current plans to commence one.

West Oxfordshire

- 2.91 Please see the Oxfordshire-wide commentary above for other relevant matters related to West Oxfordshire.
- 2.92 South and Vale have very good engagement with West Oxfordshire, which is structured and led mostly through the OPPO group. There has also been effective informal information sharing and support between officers, and responses as engagements as necessary. West Oxfordshire has taken a lead in commissioning the joint GTAA study, and we have a signed partnership agreement relating to that piece of work.
- 2.93 West Oxfordshire did not comment at the Regulation 19 stage on the JLP, although they did request an extension to the close of consultation. South and Vale have asked about the potential to prepare a Statement of Common Ground which West Oxfordshire have agreed they could do, and this will be prepared imminently.

Oxford City

- 2.94 Please see the Oxfordshire-wide commentary above for other relevant matters related to Oxford City Council.
- 2.95 Oxford City Council have been preparing a new Local Plan which reached Regulation 19 stage and then submission in March 2024. At the Regulation 19 stage and also prior to submission, South and Vale raised concerns about the Duty to Co-operate for that plan and requested that Oxford did not submit its plan in its current form but instead engage further with South and Vale on a more appropriate approach to the assessment of needs. Nonetheless, Oxford chose to submit its Local Plan. Initial hearings were held in June 2024 and the Inspectors explored the concerns raised by South and Vale (and other matters). The initial Inspectors' conclusions were received on 11 September 2024¹⁰, a response from Oxford to the Planning Inspectorate was sent on 25 September 2024¹¹ and PINS sent a follow-up letter to Oxford on 20 November 2024¹². The Local Plan Inspectors have concluded that there was a failure by Oxford City

¹⁰ The Planning Inspectorate (11 September 2024) Letter: Examination of the Oxford Local Plan 2040, available at: <https://www.oxford.gov.uk/downloads/file/3600/exam-20---inspectors-post-hearings-letter-to-council-september-2024>

¹¹ Oxford City Council (25 September 2024) Letter: Re: Oxford Local Plan 2040 Post Hearings Letter, available at: <https://www.oxford.gov.uk/downloads/file/3601/exam-21---letter-to-pins-in-response-to-inspectors-post-hearings-letter>

¹² The Planning Inspectorate (20 November 2024) Letter: Re: Examination of the Oxford Local Plan 2040 Post Hearings Letter, available at: <https://www.oxford.gov.uk/downloads/file/3634/exam-22---inspectors-response-to-exam-21>

Council to comply with the Duty to Co-operate in the preparation of its new Local Plan. The Oxford Local Plan Inspectors also advised that ‘... the robustness of the Housing and Economic Needs Assessment (HENA) is questionable, and its recommendations flawed’, and therefore invited Oxford City Council to withdraw that Local Plan.

- 2.96 In its representations on the JLP at the Regulation 19 stage, Oxford has now claimed that South and Vale have not complied with the Duty to Co-operate in their preparation of the JLP. South and Vale do not agree with this claim. Whilst Oxford has criticised the degree of engagement on some evidence base studies, South and Vale do not consider that Oxford has identified any **strategic matters** arising from the JLP where there would be significant impacts on at least two planning areas as a result either of what is proposed in the JLP or as a result of what it does not propose as regards any evidenced unmet needs. South and Vale do not therefore consider that there have been any shortcomings in the required engagement on genuinely **strategic matters**. To assist us in determining whether any of the issues raised by Oxford could be considered to be Duty to Co-operate matters, we prepared a check list (attached in the summary table at Appendix 1) of those issues and our responses. That summary table does not suggest that there are any outstanding **strategic matters** being raised by Oxford.
- 2.97 Unmet Housing Need – Oxford City Council’s Local Plan 2035 (adopted 2020) set out a level of unmet need that Oxford could not accommodate within its boundaries. South Oxfordshire and Vale of White Horse engaged in a joint Oxfordshire-wide process to determine the best distribution of that unmet need and accepted a significant quantum of unmet need (South Oxfordshire is accommodating 4,950 homes between 2021/21 and 2035/36, and the Vale of White Horse is accommodating 2,200 homes between 2019/20 and 2030/31) which were accommodated in our adopted Local Plans in 2019 and 2020 respectively. The Joint Local Plan period overlaps with the period for delivering that agreed unmet need, so we continue to include provision for around 7,000 homes for Oxford’s unmet need. We are continuing to engage on this matter, including through pre-application and application stage discussions about edge of Oxford sites as they come forward. In October 2024, outline planning permission (subject to S106) was granted by South Oxfordshire and Oxford City for the first of the three large allocations adjoining Oxford in South Oxfordshire (Land north of Bayswater Brook).
- 2.98 We have successfully resolved the unmet need matter previously, and in the emerging Joint Local Plan we have continued our agreement to meet that evidenced and apportioned level of unmet housing need. We also maintained the supply of sites to ensure that can happen. Oxford City objected to the JLP at the Regulation 19 stage over the previously agreed unmet need (concerned that it is not clear that delivery will happen, that sites should now be allocated specifically for it, that South and Vale are not delivering affordable units for

Oxford, and that the way the requirement is annualised is not sound). We consider that the approach being proposed in the JLP maintains the approach previously found to be sound and that no **strategic matters** arise. The delivery of the housing on sites previously endorsed in the adopted Local Plans will not give rise to any significant impacts on two or more planning areas. Any concerns on the effectiveness or deliverability of the housing to meet Oxford's agreed needs would be matters relating to soundness and not the Duty to Co-operate.

- 2.99 Emerging Unmet Housing Need - Within their emerging Local Plan, Oxford claimed to have evidenced a need for more unmet housing need, with more to be found by its neighbours. They eventually wrote to South and Vale Councils on 22 December 2023 (after publication of their Regulation 19 Local Plan) formally requesting whether South or Vale were able to provide assistance to meet their claimed needs, which South and Vale responded to on 19 January 2024.
- 2.100 South and Vale engaged in an Oxfordshire Joint Statement of Common Ground on this matter. South and Vale strongly contested the basis for Oxford's increased unmet need for multiple reasons, including a current lack of constructive, active, and ongoing engagement under Oxford's Duty to Co-operate on the Oxford Local Plan. South and Vale engaged with the examination of Oxford City's Local Plan at their initial hearings in June 2024, clearly explaining our reasons for contesting the claim for more unmet need. This was engaged with in a constructive manner in order to resolve these matters as they related to Oxford's emerging Local Plan.
- 2.101 It is now clear the emerging Oxford Local Plan cannot progress, and there is no quantified additional unmet need that neighbouring authorities should plan for beyond the unmet need to which we have already committed. Following initial conclusions made by the Oxford Local Plan Inspectors, we await a decision from the City Council about their next steps which we understand to be subject to a cabinet meeting in January 2025. At this time, there is no evidential basis to conclude that there is any new unmet need beyond that which is previously agreed.
- 2.102 South and Vale have made attempts to enquire about Oxford's next steps since the Inspectors' conclusions in September 2024. This included asking at OPPO meetings, calling officers at Oxford to ask for a relevant update to include in this Statement, and ultimately writing to the Chief Executive of Oxford City Council on 26 November 2024 to ask if more information about those next steps could be shared (see Appendix 2). A response from Oxford City Council's Chief Executive was received on 2 December 2024 (see Appendix 3). As a result of these engagements, we have no evidential basis to conclude that there will be additional unmet need.

- 2.103 It is understood that at a meeting between Cherwell and Oxford on 15 October 2024 (as set out in paragraph 4.13 of the Cherwell Interim Duty to Cooperate Statement¹³), which was held after Oxford had received the initial letter dated 11 September 2024 from their examining Inspectors, Oxford indicated that its current position was that its housing needs should be based on the position in its adopted Local Plan 2036 and that it did not request Cherwell to make any further accommodation to meet its needs. South and Vale asked Oxford on 5 December 2024 whether the same position applied for South and Vale and has been informed that Oxford's position (including on unmet need) remains as set out in its Regulation 19 representations. Those representations do not identify any unmet needs beyond those previously agreed.
- 2.104 Spatial Strategy – The JLP spatial strategy at Policy SP1 has taken account of the relevant cross-boundary matters, specifically the previous request from Oxford City to meet their unmet housing needs. This was accepted by both in the previous Vale of White Horse Local Plan Part 2 Plan, and the South Oxfordshire Local Plan 2035. South and Vale allocated additional sites to ensure that the agreed and apportioned housing needs between Oxfordshire districts were met, but the majority of these sites are yet to be delivered (some delivery has taken place, especially north of Abingdon in Vale). South and Vale have continued to support the delivery of the agreed unmet need within this Joint Local Plan period, and made this explicit within our overall JLP spatial strategy.
- 2.105 Oxford has objected to the JLP strategy, suggesting that the councils should ringfence the housing need and supply for addressing Oxford's unmet housing need to be addressed in the JLP.. There is no resolution to this disagreement, as South and Vale's approach to unmet need and its delivery has remained consistent between their adopted Local Plans and the JLP and so has been soundly based for some time. This delivery is ongoing, it has been successful and there is more than sufficient land coming forward in South and Vale near Oxford to ensure the unmet need can be delivered. South and Vale see this disagreement as a soundness matter but in any event note that the Duty to Cooperate is not a 'duty to agree'.
- 2.106 Housing Requirement – JLP Policy HOU1 and the determined housing requirement has taken account of the existing and agreed unmet need from Oxford City, established in the current adopted Local Plans. The Regulation 18 Part 2 consultation stage included an option considering re-assessment of the contribution that could be made towards the Oxfordshire Growth Deal targets. The SA accompanying the JLP has also tested alternatives. Given that there are wider implications of this if South and Vale were to have opted for an

¹³ Cherwell District Council (November 2024) Interim Duty to Cooperate Statement, available at: <https://modgov.cherwell.gov.uk/documents/s57778/Appendix 6 - Interim Regulation 19 Duty to Cooperate Statement.pdf>

alternative strategy, this could have been an important Duty to Co-operate strategic matter had such a strategy been pursued. Neither the Growth Deal re-assessment option, nor other options tested in the SA, have been selected as a preferred option, and there are no impacts on other authorities.

- 2.107 Oxford City objected to the JLP at Regulation 19 stage, suggesting that the housing requirement needs to be re-assessed because the JLP makes significant employment allocations and includes greater jobs growth than needed, meaning that more housing is needed to balance that. South and Vale do not agree that the JLP sets out significant new employment allocations or hidden jobs growth that may risk the balance of housing and employment.
- 2.108 Employment – There is a spatial relationship between the JLP allocated site SA3 at Grenoble Road and Oxford. This is a 10 hectare employment site as part of a previous and proposed wider housing allocation, which Oxford City has historically supported as a site allocation and is of value to the wider area including the City. It lies directly adjacent to Oxford Science Park. The JLP maintains the previous policy approach to that employment provision (already found to be sound), and it was not considered to give rise to any Duty to Co-operate issues when the South Oxfordshire Local Plan (2035) was examined. South and Vale do not consider there has been any material change in circumstances in that regard.
- 2.109 At Regulation 19 stage Oxford challenged employment in the JLP on the basis that South and Vale have not met the Duty to Co-operate, and that our employment evidence (Employment Land Needs Assessment) and employment policies are not sound. South and Vale do not agree with Oxford's challenges, particularly the Duty to Co-operate suggestions made at Regulation 19 that South and Vale did not engage on the employment evidence. The ELNA was published at Regulation 18 stage in January 2024, and indeed Oxford commented upon it at that stage. The ELNA does not show that the employment provision in the JLP will result in development within South and Vale having a significant impact on two or more planning areas. Nor does the ELNA suggest that there will be unmet employment needs that will be displaced from the JLP so as to give rise to significant impacts elsewhere.
- 2.110 Landscape - Some of the allocations for development around Oxford must account for views and visually sensitive skylines associated with our neighbours Oxford. Our Policy NH5 refers to the 2015 Assessment of Oxford View Cones¹⁴ and these are protected in relevant allocations. There are no Duty to Co-operate challenges to this.
- 2.111 Lowland fens- At Regulation 19 stage Oxford challenged the publication of a study assessing the hydrological catchments for lowland fens, considering

¹⁴ Oxford City Council (2015) Oxford Views Study, available at: https://www.oxford.gov.uk/info/20064/conservation/876/oxford_views_study

there to be a significant failure of the Duty to Co-operate due to the lack of discussion on the methodology and for failing to raise issues of sensitivity arising with Oxford City. We shared the brief for the study with Oxford City, we invited questions and discussion about the commission and Oxford did not ask any (nor did they highlight their own approach). We have included a modification to the policies map¹⁵ to remove any mapping outside of South and Vale, including lowland fens and their catchments, as this content was displayed in error at the Regulation 19 stage. The matter of lowland fens is not a strategic matter, nor does the study give rise to any significant impacts on two or more planning areas. Any concerns on the effectiveness of Policy NH1, as it applies to development in South and Vale, would be a matter relating to soundness and not the Duty to Co-operate.

¹⁵ Examination library reference: CSD01.1, modification reference: PM06

3 Engagement

- 3.1 This section of the statement includes a table setting out the various engagements that have taken place in the formulation of the Joint Local Plan up to the Regulation 19 stage, as they relate to the potential strategic matters.
- 3.2 There has been more extensive engagement that has taken place on general planning matters and in relation to other neighbouring authority's Local Plans, but these are not all detailed below, because this statement focusses on our Joint Local Plan, and how these engagements have helped us comply with the Duty to Co-operate through specific meetings and other methods.
- 3.3 The table below sets out the relevant Joint Local Plan engagements.

Date	Strategic Planning Matter	Engagement With:			Topic	All Bodies/ Parties Present	Purpose of meeting / key decisions made	Actions/next steps (related to Strategic Issue(s))
		Council	Prescribed body	Non-prescribed body				
Various dates throughout the JLP plan preparation period 2021-2024	All matters	All Oxfordshire Local Authorities and various guest speakers as required			All matters	All Oxfordshire Local Authorities Planning Officers (usually one representative per authority)	Oxfordshire Planning Policy Officers Meetings (OPPO) is a regular meeting (around monthly) of policy officers to discuss planning policy related matters and to provide update on plan progress	As per the notes of meetings on a range of strategic planning matters. The outstanding action from the last OPPO meeting prior to Regulation 19 of the JLP was to comment on the draft Joint Oxfordshire Statement of Common Ground
Various dates throughout the JLP plan preparation period 2021-2024	All matters			Oxfordshire Growth Board (Future Oxfordshire Partnership or FOP)	FOP and any planning policy related matters	Oxfordshire authorities and non-voting members (ICB, Environment Agency, Homes England, two universities, Oxfordshire Skills Board and Oxfordshire LEP)	The board has a co-ordinating role regarding economic, housing and infrastructure delivery matters. This helps to support the development of policy and secure funding as well as oversee planning policy related work programmes	As per published board minutes
Various dates throughout the JLP plan preparation period 2021-2024	All matters	Oxfordshire County Council			Evidence base and Joint Local Plan, infrastructure matters	Oxfordshire County Council and South and Vale Planning Policy	Various meetings to discuss specific transport schemes, policies, sites and development of transport evidence take place on a regular basis as required, all of which are not individually recorded below	N/A
08/10/2021	Housing need and supply, including affordable housing, and the provision of sites for Gypsies and Travellers	Cherwell Oxford City Oxfordshire County Council West Oxfordshire			GTAA evidence for Oxfordshire plan (now abandoned)	Cherwell, County, West Ox, Consultants RRR	Discuss progress on GTAA for Oxfordshire Plan evidence base (now abandoned)	Consultants to provide update on draft report
30/11/2021	Joint Evidence Base	Cherwell						Notes filed

Date	Strategic Planning Matter	Engagement With:			Topic	All Bodies/ Parties Present	Purpose of meeting / key decisions made	Actions/next steps (related to Strategic Issue(s))
		Council	Prescribed body	Non-prescribed body				
		Oxford City			Joint Evidence Base	Cherwell, Oxford City, West Oxfordshire District Council, SODC & VOWH, Oxfordshire County Council	Discussion on potential alignment of evidence base - local plans and Oxfordshire Plan (now abandoned)	
		Oxfordshire County Council						
		West Oxfordshire						
24/01/2022	Conserving and Enhancing our Natural and Historic Environments Joint Evidence Base	West Oxfordshire			Natural Capital.	West Oxfordshire District Council, SODC & VOWH	Discussed West's approach to natural capital in the Salt Cross AAP and the potential to commission joint evidence on this for our new local plans.	Potential for joint evidence could be raised via OPPO
20/01/2022	The provision of infrastructure, including health, education, utilities, flood risk and strategic sustainable transport links	Oxfordshire County Council			Transport evidence required for LP 2041	South and Vale, OCC Localities Team	Onboarding, early discussions relating to JLP 2041 work, Draft LTCP, LCWIPs, Decide and provide, OMM model update	Need to review safeguarding sites
03/02/2022	Multiple Strategic Planning Matters	Cherwell			Joint HELAA steering group	Cherwell, City, West Ox	Discuss joint methodology and options for alignment	Meetings every 4-8 weeks as needed. City chair
		Oxford City						
		West Oxfordshire						
09/02/2022	The provision of infrastructure, including health, education, utilities, flood risk and strategic sustainable transport links		England's Economic Heartland		EEH Connectivity Studies: Sw-Di-Ox Steering Group Meeting 1	South and Vale, OCC, Swindon, EEH, WSP, Steer, Oxford Bus,	Early-stage intro and fact finding for Swindon-Oxford-Didcot Connectivity Study - issues and opportunities	Send additional considerations to study where relevant
10/02/2022	The provision of infrastructure, including health, education, utilities, flood risk and strategic sustainable transport links			Oxfordshire Strategic Transport Forum	Strategic transport	Go Ahead, Cherwell, OCC, NH, Freight logistics, Stagecoach, West Ox, GWR, Cllrs	Freight and rail freight, mobility hubs, integrated ticketing, BSIP/Zebra	N/A

Date	Strategic Planning Matter	Engagement With:			Topic	All Bodies/ Parties Present	Purpose of meeting / key decisions made	Actions/next steps (related to Strategic Issue(s))
		Council	Prescribed body	Non-prescribed body				
21/02/2022	The provision of infrastructure, including health, education, utilities, flood risk and strategic sustainable transport links	Oxfordshire County Council			Abingdon LCWIP	OCC/Vale/Cllrs/Cycling champions	LCWIP Steering Group, developing cycling and walking infrastructure in Abingdon	Notes filed
09/03/2022	The provision of infrastructure, including health, education, utilities, flood risk and strategic sustainable transport links	Oxfordshire County Council			Transport evidence required for Local Plan 2041	South and Vale, OCC Localities Team	Review Evidence Base documents, Validation used in OMM, Decide and Provide, PROW	OCC to provide update on infrastructure delivery, and review safeguarding sites
10/03/2022 06/04/2022 05/05/2022	The provision of infrastructure, including health, education, utilities, flood risk and strategic sustainable transport links Conserving and Enhancing our Natural and Historic Environments		Natural England		Green Infrastructure	Various other authorities who had also signed up to test the emerging GI framework	To test Natural England's emerging GI framework, provide feedback, and to consider how it might inform the approach in the JLP	Notes filed
28/03/2022	The provision of infrastructure, including health, education, utilities, flood risk and strategic sustainable transport links	Oxfordshire County Council			Monthly JLP/OCC meeting	SODC, VOWHDC, OCC	Update OCC on progress / timings of JLP, Draft Transport Policies etc	Note of meeting produced
29/03/2022	The provision of infrastructure, including health, education, utilities, flood risk and strategic sustainable transport links	Oxfordshire County Council			Safeguarding Sites in Adopted Local Plans	OCC/S&V	Reviewed all safeguarded sites as per adopted Local Plans	Notes filed

Date	Strategic Planning Matter	Engagement With:			Topic	All Bodies/ Parties Present	Purpose of meeting / key decisions made	Actions/next steps (related to Strategic Issue(s))
		Council	Prescribed body	Non-prescribed body				
05/04/2022	The provision of infrastructure, including health, education, utilities, flood risk and strategic sustainable transport links	Oxfordshire County Council			Transport evidence required for Local Plan 2041	South and Vale, OCC Localities Team	Evidence Base, NPPG details	Notes filed
06/04/2022	The provision of infrastructure, including health, education, utilities, flood risk and strategic sustainable transport links	Oxfordshire County Council			Abingdon LCWIP	OCC/Vale/Cllrs/Cycling champions	LCWIP Steering Group, developing cycling and walking infrastructure in Abingdon	Notes filed
13/04/2022	The provision of infrastructure, including health, education, utilities, flood risk and strategic sustainable transport links			OMM team Immense	Transport evidence required for LP 2041	S&V and Immense (OMM team)	High level OMM operation, review of proposed use in JLP	Notes filed
27/04/2022	The provision of infrastructure, including health, education, utilities, flood risk and strategic sustainable transport links			Active Travel England (ATE)	ATE to become statutory consultation body	ATE, South and Vale	Early-stage discussion of ATE's role, ATE request for examples to use	Next meeting in a month or so, with DM and OCC
28/04/2022	The provision of infrastructure, including health, education, utilities, flood risk and strategic sustainable transport links	Cherwell			Health Impact Assessments	Oxfordshire County Council and Cherwell	To discuss Cherwell's experience with commissioning a HIA for their JLP, and also discussing Public Health at County's input into this and what help they can provide us in developing our own	Will follow up with Public Health at the County when developing our own HIA, particularly in the scoping stage.
		Oxfordshire County Council						
28/04/2022	The provision of infrastructure, including health, education, utilities, flood risk and			British Cycling (BC)	Cycling Infrastructure	British Cycling, South and Vale	Considering strategies to improve cycling infrastructure	BC to provide follow up examples

Date	Strategic Planning Matter	Engagement With:			Topic	All Bodies/ Parties Present	Purpose of meeting / key decisions made	Actions/next steps (related to Strategic Issue(s))
		Council	Prescribed body	Non-prescribed body				
	strategic sustainable transport links							
04/05/2022	Housing need and supply for Oxfordshire Plan 2050	Cherwell Oxford City Oxfordshire County Council West Oxfordshire			OGNA (Now abandoned)	SODC, VOWH, OCC, County Council, Cherwell and West	Agree tender for OGNA work	Providing comments on the tender
12/05/2022	Supply of Retail and Employment Land	West Berkshire			Unmet employment need	SODC, VoWH, West Berks	Discuss progress of Local Plans and evidence base. West Berks asking if we and others can take their unmet employment needs	Letter to follow
08/06/2022	Housing need and supply, including affordable housing, and the provision of sites for Gypsies and Travellers	Wokingham			Strategic Flood Risk Assessment (SFRA) work to support WBC's emerging Local Plan Update (LPU).	N/A	JBA Consulting to carrying out Strategic Flood Risk Assessment (SFRA) work to support WBC's emerging Local Plan Update (LPU). Includes a review and update to the existing Level 1 SFRA, and a Level 2 SFRA. We are currently collating data from neighbouring local authorities to inform this work. Request to share shapefiles on site allocations (within adopted plan) within your authority area, to inform any cross-boundary impacts and cumulative development for the Wokingham SFRA	Shapefiles sent
14/06/2022	The provision of infrastructure, including health, education, utilities, flood risk and strategic sustainable transport links	Oxfordshire County Council			Monthly JLP/OCC meeting	SODC, VOWHDC, OCC	Update OCC on progress / timings of JLP, Draft Transport Policies etc	Note of meeting produced

Date	Strategic Planning Matter	Engagement With:			Topic	All Bodies/ Parties Present	Purpose of meeting / key decisions made	Actions/next steps (related to Strategic Issue(s))
		Council	Prescribed body	Non-prescribed body				
17/06/2022	Conserving and Enhancing our Natural and Historic Environments	Cherwell			Green Infrastructure.	N/A	Cherwell consultation on emerging GBI strategy. S&V response - We believe that it may be helpful for the Councils to have a conversation about cross-boundary GBI around the Cherwell/South Oxfordshire border, in particular the proposal for a 'regional nature park' in this area.	Arrange meeting to discuss
11/08/2022	Addressing Climate Change	Oxford City			Changes to Building Regulations affecting policy and also future climate change policy more generally	Oxford City and S&V	To discuss their approach to the change in building regulations in relation to their current policy requirements. Due to the wording of their policy they were able to simply assess their Policy RE1 via the new regulations but our policy did not have the same wording to allow us to do that. We also discussed future climate change policy more generally and thought we could share ideas in future	Potential future meeting regarding what we are doing regarding climate change policy
17/08/2022 07/09/2022	The provision of infrastructure, including health, education, utilities, flood risk and strategic sustainable transport links	Cherwell District Council			IDP and workshop	Email and workshop by Cherwell/LUC	IDP associated with Cherwell Local Plan to 2040 and invited to workshop	Will review IDP alongside Cherwell consultation. South and Vale officer attended workshop
23/08/2022	The provision of infrastructure, including health, education, utilities, flood risk and strategic sustainable transport links	Oxfordshire County Council			Monthly JLP/OCC meeting	SODC, VOWHDC, OCC	Update OCC on progress / timings of JLP, Draft Transport Policies etc	Note of meeting produced
26/08/2022	Conserving and Enhancing our Natural and Historic Environments		Natural England		Nutrient neutrality	Natural England, South & Vale	How to approach nutrient neutrality issues associated with the River Lambourn SAC in the JLP and HRA	Engage with NE through the HRA process

Date	Strategic Planning Matter	Engagement With:			Topic	All Bodies/ Parties Present	Purpose of meeting / key decisions made	Actions/next steps (related to Strategic Issue(s))
		Council	Prescribed body	Non-prescribed body				
21/09/2022	All matters	West Oxfordshire District Council			West Oxfordshire Regulation 18 'Your Voice Counts' consultation	Email from South and Vale	Response to the Regulation 18 consultation	Responded 21/09/22, on file
22/09/2022	Multiple Strategic Planning Matters	West Oxfordshire			Regulation 18 consultation undertaken by West Oxfordshire	Email only	Email sent on 21/9/22 (saved in DTC file) to confirm that no formal response will be sent by South and Vale and the reasons why we consider that a response isn't necessary	No further action
22/09/2022	The provision of infrastructure, including health, education, utilities, flood risk and strategic sustainable transport links	Cherwell			Waste water treatment	Email only (via Cherwell WCS consultants - JBA)	Provided information on planned development within WwTW catchments that are shared with Cherwell so that Cherwell's WCS can take account of development in S&V	No further action
22/09/2022	Supply of Retail and Employment Land	West Berkshire			Unmet employment need	Email between S&V and W.Berks		Email on file
29/09/2022	Conserving and Enhancing our Natural and Historic Environments		Environment Agency		OxCam Integrated Water Management Framework	EA, S&V, various other LPAs.	EA workshop to gain views on the appropriate scope and outputs from the OxCam Integrated Water Management Framework.	Future workshops to refine scope.
30/09/2022	Conserving and Enhancing our Natural and Historic Environments	Oxfordshire County Council			Green Infrastructure.	OCC, S&V.	To find out if OCC is progressing any GI work at a countywide scale. Also to discuss potential GI approaches and evidence for the JLP.	Include OCC in GI steering group if this is progressed. Share GI brief with OCC.
15/11/2022	The provision of infrastructure, including health, education, utilities, flood risk and strategic sustainable transport links	Oxfordshire County Council			Monthly JLP/OCC meeting	SODC, VOWHDC, OCC	Update OCC on progress / timings of JLP, Draft Transport Policies etc	Note of meeting produced

Date	Strategic Planning Matter	Engagement With:			Topic	All Bodies/ Parties Present	Purpose of meeting / key decisions made	Actions/next steps (related to Strategic Issue(s))
		Council	Prescribed body	Non-prescribed body				
18/11/2022	All matters	Oxford City Council			Oxford City Council Regulation 18 Preferred Options consultation	South and Vale response to the consultation	Formal responses sent by South and Vale	Responses sent
22/11/2022	Conserving and Enhancing our Natural and Historic Environments	West Oxfordshire Oxford City Council			Biodiversity Net Gain	West Oxfordshire Oxford City Council TVERC Trust for Oxfordshire	To discuss the potential to develop shared evidence to support requiring >10% BNG across Oxfordshire.	Notes filed
25/11/2022	All matters	West Berkshire			West Berkshire Local Plan	Email from West Berkshire	Email from West Berkshire about forthcoming consultation and update on unmet employment needs	To propose a follow up meeting
16/12/2022	All matters	Buckinghamshire Council			Sustainability Appraisal	Email from Buckinghamshire Council	South and Vale Invitation to make comments on the Sustainability Appraisal (SA) Scoping Report and HRA Scoping Report	Response sent 27 January 2023, Letter on file
06/01/2023	All matters	Cherwell District Council			Statement of Common Ground	Email from Cherwell District Council	Cherwell sent a first draft Statement of Common Ground. South and Vale began and sent amendments, but SOCG was abandoned by Cherwell at that stage as their consultation was delayed	No further action
10/01/2023	The provision of infrastructure, including health, education, utilities, flood risk and strategic sustainable transport links	Oxfordshire County Council			Monthly JLP/OCC meeting	SODC, VOWHDC, OCC	Update OCC on progress / timings of JLP, Draft Transport Policies etc	Note of meeting produced

Date	Strategic Planning Matter	Engagement With:			Topic	All Bodies/ Parties Present	Purpose of meeting / key decisions made	Actions/next steps (related to Strategic Issue(s))
		Council	Prescribed body	Non-prescribed body				
17/01/2023	Housing need and supply, including affordable housing, and the provision of sites for Gypsies and Travellers	Oxford City Council			Oxford Regulation 18 Local Plan bespoke consultation on housing need	Response from South and Vale Councils	To send formal responses to the consultation from South and Vale	Responses sent
18/01/2023	Conserving and Enhancing our Natural and Historic Environments	Buckinghamshire Council			SFRA / WCS and site allocations	Email with Buckinghamshire Council officers and their consultants JBA	JBA Consulting had been commissioned by Bucks to prepare a Level 1 Strategic Flood Risk Assessment (SFRA) and Scoping Water Cycle Study (WCS). We provided our site allocations for South Oxfordshire in June 2022, as part of the Wokingham SFRA update and the email requests a copy of the latest committed sites, and to ask permission to use the existing allocated site data within the Buckinghamshire SFRA/WCS	South and Vale officers responded with shapefiles and permission by 3 Feb 2023
02/02/2023	All matters	West Berkshire District Council			Planning Policy and Local Plan progress, unmet need	South and Vale Officers, West Berkshire Officers	Discussion about West Berkshire unmet needs for office and industrial employment land, South and Vale current supply and JLP position. 20 January 2023 email regarding Regulation 19 consultation.	Formal responses required before West Berkshire submits their plan for examination – sent 16 March 2023, on file
27/03/2023	Housing need and supply, including affordable housing, and the provision of sites for Gypsies and Travellers	Oxford City			Unmet housing need	Oxford City and S&V	Detailed note made. Key issues related to S&V concerns about the HENA methodology, its inclusion of all of Oxfordshire, and the capacity for housing within the City	Actions in note
19/04/2023	Housing need and supply, including affordable housing, and the provision of sites for Gypsies and Travellers	All			Specialist Housing Need	All neighbours except Wiltshire and Cotswold	A workshop to discuss methodology for the Specialist Housing Needs Assessment	Actions in note

Date	Strategic Planning Matter	Engagement With:			Topic	All Bodies/ Parties Present	Purpose of meeting / key decisions made	Actions/next steps (related to Strategic Issue(s))
		Council	Prescribed body	Non-prescribed body				
19/04/2023	Conserving and Enhancing our Natural and Historic Environments	Oxfordshire County Council		Chilterns AONB Conservati on Board	Landscape (Tranquillity)	S&V, OCC, members from both AONBs and CPRE	To discuss tranquillity indicators and ascertain data sources to feed into tranquillity evidence	Production of landscape evidence and update landscape policies
26/04/2023	Housing need and supply, including affordable housing, and the provision of sites for Gypsies and Travellers	Oxfordshire County Council			Site allocations	County Council and S&V	Discuss amendments to site allocations made in current local plans to carry over into the JLP	Continued amendments to the site allocations
09/05/2023	Housing need and supply, including affordable housing, and the provision of sites for Gypsies and Travellers	Oxfordshire County Council			Site allocations	County Council and S&V	Discuss amendments to site allocations made in current local plans to carry over into the JLP	Continued amendments to the site allocations
09/05/2023	The provision of infrastructure, including health, education, utilities, flood risk and strategic sustainable transport links	Oxfordshire County Council			Site allocations	SODC, VOWHDC, OCC	Continue discussions about site allocations following JLP/OCC meeting (also on 12/05/12)	Discussions to feed into policy drafting
12/05/2023	Conserving and Enhancing our Natural and Historic Environments	Buckinghamshire Council			SFRA	Email from Buckinghamshire Council	The Bucks draft Level 1 SFRA has been prepared, and South and Vale were invited to comment on the draft report	No requirement to comment
22/05/2023	The provision of infrastructure, including health, education, utilities, flood risk and strategic sustainable transport links			Thames Water	SESRO	Mott Macdonald, E Simons Consulting, Thames Water, Constain, Network Rail, VOWHDC, OCC	To discuss rail sidings infrastructure for SESRO	SESRO team to take away feedback, Network Rail to provide further information for SESRO team
23/05/2023	The provision of infrastructure, including health,	Oxfordshire County Council			Wantage and Grove Railway Station	OCC, VOWHDC	To discuss safeguarding land for the station. Review if to add or remove land	OCC indicated that the eastern and western locations

Date	Strategic Planning Matter	Engagement With:			Topic	All Bodies/ Parties Present	Purpose of meeting / key decisions made	Actions/next steps (related to Strategic Issue(s))
		Council	Prescribed body	Non-prescribed body				
	education, utilities, flood risk and strategic sustainable transport links						currently safeguarded for consideration of what should be included in the JLP	are not suitable for the station and that the central location is the more appropriate for safeguarding. (To review this suggestion with internal colleagues and other OCC officers)
24/05/2023	The provision of infrastructure, including health, education, utilities, flood risk and strategic sustainable transport links	Oxfordshire County Council			Monthly JLP/OCC meeting	SODC, VOWHDC, OCC	Culham (STRAT9), Northfield, Wheatley, updates from OCC, update OCC on progress / timings of JLP, Draft Transport Policies, live edit - continuation	To consider site allocations considerations, to consider policies suggestions
25/05/2023	The provision of infrastructure, including health, education, utilities, flood risk and strategic sustainable transport links	Buckinghamshire Council			Local Plan and LTP5 for Buckinghamshire	Email from Buckinghamshire Council	Local Plan for Buckinghamshire and Local Transport Plan 5 Survey	02/06/2023 response sent from South and Vale Councils – no comments to make but reminded them of forthcoming JLP consultation for us
12/06/2023	The provision of infrastructure, including health, education, utilities, flood risk and strategic sustainable transport links	Oxfordshire County Council			Transport Safeguarding	SODC/VOWHDC, OCC	To discuss safeguarding mapping particulars for the emerging JLP	OCC to action mapping requests and seek further information internally To check through mapping
13/06/2023	The provision of infrastructure, including health, education, utilities, flood risk and strategic sustainable transport links	Oxfordshire County Council			OCC Liaison	OCC, SODC/VOWH	Updates between the authorities followed by strategic site meetings for South and separately Vale	Note of meeting produced

Date	Strategic Planning Matter	Engagement With:			Topic	All Bodies/ Parties Present	Purpose of meeting / key decisions made	Actions/next steps (related to Strategic Issue(s))
		Council	Prescribed body	Non-prescribed body				
16/06/2023	The provision of infrastructure, including health, education, utilities, flood risk and strategic sustainable transport links	Oxfordshire County Council			OMM/Alternatives for modelling	SODC/VOWHDC, OCC	To discuss modelling for the JLP. Considering OMM particulars	To consider modelling runs and OMM commission further
19/06/2023	The provision of infrastructure, including health, education, utilities, flood risk and strategic sustainable transport links	Swindon BC			Liaison with Swindon and OCC	OCC, SBC, VOWHDC	To update all present on progress in planning matters, including Local Plan updates and LTP updates	VOWHDC to produce minutes and to arrange next meeting
21/06/2023	The provision of infrastructure, including health, education, utilities, flood risk and strategic sustainable transport links	Oxfordshire County Council			Modelling	SODC/VOWHDC, OCC	For OCC to provide an update on way forward for modelling, with OMM now identified as not being ready to support JLP	OCC to review existing evidence base work and qualitative assessment to support JLP
26/06/2023	The provision of infrastructure, including health, education, utilities, flood risk and strategic sustainable transport links	Oxford City			Local Plan and modelling	Oxford City, SODC/VOWHDC	To discuss Local Plan development and associated modelling requirements	N/A
26/06/2023	Housing need and supply, including affordable housing, and the provision of sites for Gypsies and Travellers	Oxford City			Local Plan and Oxford Local Plan	Oxford City, SODC/VOWHDC	To discuss Oxford City HELAA outputs, Local Plan development, evidence base and direction of travel	Oxford to prepare meeting note
27/06/2023	The provision of infrastructure, including health, education, utilities, flood risk and strategic sustainable transport links	Oxfordshire County Council			Modelling / JLP	SODC/VOWHDC, OCC	To discuss modelling undertaken by other authorities, what the qualitative assessment could look like and considerations for Existing transport conditions report	To progress procurement of Existing transport conditions report

Date	Strategic Planning Matter	Engagement With:			Topic	All Bodies/ Parties Present	Purpose of meeting / key decisions made	Actions/next steps (related to Strategic Issue(s))
		Council	Prescribed body	Non-prescribed body				
29/06/2023	The provision of infrastructure, including health, education, utilities, flood risk and strategic sustainable transport links	West Oxfordshire District Council			Local Plan and modelling	West Oxon, SODC/VOWHDC	To discuss Local Plan development and associated modelling requirements	N/A
17/7/2023	Joint Evidence Base	All Oxfordshire District/City Council			Joint Housing and Economic Land Availability assessment methodology engagement	Email to all Oxfordshire district and City Council	To engage on the assumptions made in the HELAA for South and Vale	Review responses received and record engagement in the HELAA paper and Duty to Co-operate Paper with responses to comments made
18/07/2023	The provision of infrastructure, including health, education, utilities, flood risk and strategic sustainable transport links	Oxfordshire County Council			OCC Liaison	OCC, SODC/VOWH	Updates between the authorities followed by strategic site meetings for South and separately Vale	Note of meeting produced
03/08/2023	The provision of infrastructure, including health, education, utilities, flood risk and strategic sustainable transport links	Oxfordshire County Council			Didcot LCWIP	OCC, SODC/VOWH, Systra	To review content of emerging Didcot LCWIP for OCC to adopt (although led by internal Didcot Garden Town team)	N/A
11/08/2023	The provision of infrastructure, including health, education, utilities, flood risk and strategic sustainable transport links	Oxfordshire County Council			Didcot NPR3	SODC/VOWHDC, OCC	A stakeholder workshop to review Didcot NPR3 progress to date and request for comments	N/A
22/08/2023	The provision of infrastructure, including health, education, utilities, flood risk and	Oxfordshire County Council			Safeguarding Schemes	SODC/VOWHDC, OCC	To discuss the particulars of a safeguarded scheme update	To identify considerations with Specialists team - Flooding, biodiversity etc

Date	Strategic Planning Matter	Engagement With:			Topic	All Bodies/ Parties Present	Purpose of meeting / key decisions made	Actions/next steps (related to Strategic Issue(s))
		Council	Prescribed body	Non-prescribed body				
	strategic sustainable transport links							
23/08/2023	The provision of infrastructure, including health, education, utilities, flood risk and strategic sustainable transport links	Oxfordshire County Council			JLP Transport work	SODC/VOWHDC, OCC	In house evidence base sections and chapters, general update on projects	N/A
24/08/2023	Conserving and Enhancing our Natural and Historic Environments	West Oxfordshire			Biodiversity Net Gain	West Oxfordshire	Discussing evidence requirements for >10% BNG and an update on what has been procured and what else might be needed.	Continue to engage
05/09/2023	The provision of infrastructure, including health, education, utilities, flood risk and strategic sustainable transport links	Oxfordshire County Council			OCC Liaison	OCC, SODC/VOWH	Updates between the authorities followed by strategic site meetings for South and separately Vale	Note of meeting produced
06/09/2023	The provision of infrastructure, including health, education, utilities, flood risk and strategic sustainable transport links	Oxfordshire County Council			JLP Transport work	SODC/VOWHDC, OCC	HIF update, site allocations discussion, draft in house report info	To progress in-house work
08/09/2023	The provision of infrastructure, including health, education, utilities, flood risk and strategic sustainable transport links	Oxfordshire County Council			School travel information	SODC/VOWHDC, OCC	To discuss access to school travel plan data for use in evidence base work	OCC to provide access for travel plan platform
11/09/2023	The provision of infrastructure, including health, education, utilities, flood risk and	Oxfordshire County Council			School bus travel	SODC/VOWHDC, OCC	Gather information about school bus services and free travel services	N/A

Date	Strategic Planning Matter	Engagement With:			Topic	All Bodies/ Parties Present	Purpose of meeting / key decisions made	Actions/next steps (related to Strategic Issue(s))
		Council	Prescribed body	Non-prescribed body				
	strategic sustainable transport links							
12/09/2023	Conserving and Enhancing our Natural and Historic Environments	West Oxfordshire Oxford City Council OCC (Minerals and Waste) Cherwell			Habitat Regulations Assessment	West Oxfordshire Oxford City Council OCC (Minerals and Waste) Cherwell	Discussion about how/when to commission air quality evidence to assess impact of cumulative planned development, primarily on Oxford Meadows SAC.	Meeting note produced. Keep in touch with other authorities about their Local Plan timetables (to determine whether there's scope for any joint commission on traffic modelling/air quality impacts
26/09/2023	The provision of infrastructure, including health, education, utilities, flood risk and strategic sustainable transport links	Oxfordshire County Council			EV chargers Workshop	SODC/VOWHDC, OCC	To explore types and locations of EV chargers (relating to OCC receiving funding for installation)	N/A
28/09/2023	The provision of infrastructure, including health, education, utilities, flood risk and strategic sustainable transport links re	Wiltshire			Canal Partnership Towpath Challenge	VOWHDC, Wiltshire, OCC, SBC	To discuss the benefits of seeking to promote a walking and cycling route along the historic canal route in order to support the restoration of the canal	N/A
04/10/2023	The provision of infrastructure, including health, education, utilities, flood risk and strategic sustainable transport links	Wiltshire			Wilts and Berks Canal policy	Wiltshire, S&V	To discuss the draft canal policy	To review policy wording further
06/10/2023	The provision of infrastructure, including health, education, utilities,	Reading BC			Liaison with Reading	RBC, S&V	Reading identifying their upcoming LTP, discussion about Local Plans in general and update on JLP progress	To look out for LTP consultation

Date	Strategic Planning Matter	Engagement With:			Topic	All Bodies/ Parties Present	Purpose of meeting / key decisions made	Actions/next steps (related to Strategic Issue(s))
		Council	Prescribed body	Non-prescribed body				
	flood risk and strategic sustainable transport links							South and Vale agreed to draft SOCG in preparation for next stages (likely to align with JL consultation) and will share with Reading for comments
09/10/2023	The provision of infrastructure, including health, education, utilities, flood risk and strategic sustainable transport links	Oxfordshire County Council			JLP/OCC meeting	S&V, OCC	HIF1, Site allocations, transport modelling, lodge hill slips, LTCP, safeguarding new maps	OCC to progress commission of Atkins
10/10/2023	The provision of infrastructure, including health, education, utilities, flood risk and strategic sustainable transport links	Oxfordshire County Council			OCC Liaison	OCC, SODC/VOWH	Updates between the authorities followed by strategic site meetings for South and separately Vale	Note of meeting produced
17/10/2023	All matters	West Oxfordshire District Council			West Oxfordshire Regulation 18 consultation	Responses to Regulation 18 Focused Consultation from South and Vale	Responses to consultation	Sent 17 October 2023
23/10/2023	The provision of infrastructure, including health, education, utilities, flood risk and strategic sustainable transport links	Oxfordshire County Council			Freight Steering Group	OCC, S&V, DPD, Pedal and Post, Amazon, Buckinghamshire, West North Hants, Warwickshire, Gloucestershire, SBC, Reading, Wokingham, Oxford City, Cherwell, West Oxon	OCC creating a dialogue for discussions on freight. Example of new freight consolidation site in South near M40	To follow up internally with freight consolidation concern

Date	Strategic Planning Matter	Engagement With:			Topic	All Bodies/ Parties Present	Purpose of meeting / key decisions made	Actions/next steps (related to Strategic Issue(s))
		Council	Prescribed body	Non-prescribed body				
30/10/2023	The provision of infrastructure, including health, education, utilities, flood risk and strategic sustainable transport links	Wokingham			Wokingham DTC	S&V, Wokingham	Discuss local plans and infrastructure provision, including third Thames Crossing	Notes filed
30/10/2023	The provision of infrastructure, including health, education, utilities, flood risk and strategic sustainable transport links	Oxfordshire County Council			Rail Strategy	OCC, S&V	Discuss rail planning for the S&V area, Didcot Parkway, Wantage & Grove	Next meeting to be added (OCC)
02/11/2023	Healthy Places	Oxfordshire County Council			Healthy Place shaping	OCC, S&V, Cherwell, West, Ox City	Discuss healthy place shaping in our Local Plans	N/A
03/11/2023	All matters	Cherwell District Council			Response to Cherwell Local Plan Regulation 18 consultation	South and Vale response to the Cherwell Local Plan Regulation 18 consultation	To provide a formal response to consultation	Response from South and response from Vale on file
06/11/2023	The provision of infrastructure, including health, education, utilities, flood risk and strategic sustainable transport links	Greater Cambridge			Local Plans and D&P	Greater Cambridge	To understand what Greater Cambridge are doing for D&P	N/A
07/11/2023	The provision of infrastructure, including health, education, utilities, flood risk and strategic sustainable transport links	Oxfordshire County Council			OCC Liaison	OCC, SODC/VOWH	Updates between the authorities followed by strategic site meetings for South and separately Vale	Note of meeting produced
10/11/2023	Housing need and supply, including affordable housing, and the provision of	West Berkshire Local Plan			Gypsy and Traveller call for sites for West Berkshire	Email from West Berkshire	Launch of call for sites for the DPD	No action required

Date	Strategic Planning Matter	Engagement With:			Topic	All Bodies/ Parties Present	Purpose of meeting / key decisions made	Actions/next steps (related to Strategic Issue(s))
		Council	Prescribed body	Non-prescribed body				
	sites for Gypsies and Travellers							
14/11/2023	The provision of infrastructure, including health, education, utilities, flood risk and strategic sustainable transport links	Oxfordshire County Council			JLP/OCC meeting	OCC, S&V	JE presenting on dark skies and carbon considerations, nutshell mapping considerations for transport, review of draft evidence base work (inhouse)	To complete and share evidence base work to OCC
14/11/2023	Housing need and supply, including affordable housing, and the provision of sites for Gypsies and Travellers	Swindon Borough Council			Swindon Housing Needs	S&V, Swindon BC	Swindon to share their approach to their HNA	Officers to update team on findings
15/11/2023	All matters	Wiltshire Council			Non-response to Wiltshire Regulation 19 consultation	Email from Vale	Response to Wiltshire council confirming no duty to co-operate matters with vale with no comments provided on the consultation	Response sent 15/11/23 and on file
21/11/2023	All matters	Wokingham Borough Council			Wokingham Local plan and duty to Co-operate	Email from South and Vale in response to the requests from Wokingham	Response sent from South and Vale about the request related to gypsies and travellers needs, employment and transport matters	Response sent 21/11/2023 and on file. Follow-up letter received from Wokingham on 29/11/2023 confirming previous thoughts on gypsy and traveller needs which confirms that the position remains unchanged, and no further action needed
30/11/2023	The provision of infrastructure, including health, education, utilities, flood risk and	Oxfordshire County Council			OSM modelling	OCC, Atkins, S&V	Discussion of OSM commission	OCC to progress brief

Date	Strategic Planning Matter	Engagement With:			Topic	All Bodies/ Parties Present	Purpose of meeting / key decisions made	Actions/next steps (related to Strategic Issue(s))
		Council	Prescribed body	Non-prescribed body				
	strategic sustainable transport links							
07/12/2023	The provision of infrastructure, including health, education, utilities, flood risk and strategic sustainable transport links	Oxfordshire County Council			OSM modelling	OCC, Atkins, S&V	Discussion of OSM commission	Atkins to progress response to brief
11/12/2023	All matters	Swindon BC			Liaison with Swindon and OCC	OCC, SBC, VOWHDC	To update all present on progress in planning matters, inc. Local Plan updates and LTP updates	As per any meeting notes
12/12/2023	Housing need and supply, including affordable housing, and the provision of sites for Gypsies and Travellers	Cherwell District Council			Housing Need Evidence	Cherwell District Council officer, South and Vale officer	Brief discussion about previous South and Vale matters raised regarding the Oxford and Cherwell Housing Needs Assessment and sharing of previous critiques with new officers at Cherwell	Possibly meeting in early 2024 with Oxford, Cherwell and South and Vale officers, unless these matters can be covered in the planned Oxfordshire Statement of Common Ground
12/12/2023	The provision of infrastructure, including health, education, utilities, flood risk and strategic sustainable transport links	Oxfordshire County Council			OCC Liaison	OCC, SODC/VOWH	Updates between the authorities followed by strategic site meetings for South and separately Vale	Note of meeting produced
12/12/2023	The provision of infrastructure, including health, education, utilities, flood risk and strategic sustainable transport links	Oxfordshire County Council			Joint Local Plan transport evidence base	OCC, SODC/VOWH	To review comments / progress doc. To consider D&P further	To review comments / progress doc. LD to consider D&P further
19/12/2023	All matters	Oxford City Council			Oxford City Local Plan and Evidence	Oxford City Council officers, South and Vale officers	To review matters relating to the representations about to be submitted by South and Vale to Oxford's Regulation	To meet again regarding the

Date	Strategic Planning Matter	Engagement With:			Topic	All Bodies/ Parties Present	Purpose of meeting / key decisions made	Actions/next steps (related to Strategic Issue(s))
		Council	Prescribed body	Non-prescribed body				
					Base and South and Vale Joint Local Plan		19 Local Plan, to review questions about Oxford's evidence base. To discuss the recent planning policy changes to the climate change related policies in the JLP and briefly update on the progress of the JLP	statement of common ground
20/12/2023	Housing need and supply, including affordable housing, and the provision of sites for Gypsies and Travellers	Swindon Borough Council			Housing need of Swindon	Housing need of Swindon South and Vale response to report and workshop	Response sent by South and Vale to Swindon on their housing need paper and after attending workshop hosted by Swindon and their consultants	No further action at this time
21/12/2023	All matters	Oxford City Council			South and Vale responses to the Regulation 19 Oxford Local Plan consultation	Formal representations to Oxford City Council	To provide formal responses to the consultation	No further action related to Regulation 19 responses, awaiting next steps for Oxford
22/12/2023	Housing need and supply, including affordable housing, and the provision of sites for Gypsies and Travellers	Oxford City Council			Letter from Oxford formally requesting assistance to meet a claimed unmet housing need	Email from Oxford City Council to the Chief Executive of South and Vale Councils	To request assistance to meet further claimed unmet housing need	To respond to a formal letter
09/01/2024	The provision of infrastructure, including health, education, utilities, flood risk and strategic sustainable transport links	Oxfordshire County Council			JLP Transport work	OCC, S&V	Updates shared, preparation for launch, deallocation of sites discussed, Oxford City responses under duty to cooperate discussed	N/A
23/01/2024	The provision of infrastructure, including health, education, utilities, flood risk and strategic sustainable transport links	Oxfordshire County Council			Strategic sites and Policy liaison	OCC, S&V	Joint Local Plan; Cowley Branch Line; Transport Evidence Base; Transport Strategy/Policy (zero emission zone/rail strategy); HLS update; Transport Schemes update; Garden Communities; SESRO; Neighbourhood Plan update; Government; Future Oxfordshire	S&V to consider Cowley branch line references

Date	Strategic Planning Matter	Engagement With:			Topic	All Bodies/ Parties Present	Purpose of meeting / key decisions made	Actions/next steps (related to Strategic Issue(s))
		Council	Prescribed body	Non-prescribed body				
						Partnership/OXIS/OX-Cam/EEH etc; Cross Boundary matters (Oxford City Local Plan, West Ox Local Plan, Cherwell Local Plan)		
07/02/2024	The provision of infrastructure, including health, education, utilities, flood risk and strategic sustainable transport links	Oxfordshire County Council			JLP Transport work	OCC, S&V	Updates and IDP focus, Modelling, Cowley Branch Line	N/A
29/02/2024	The provision of infrastructure, including health, education, utilities, flood risk and strategic sustainable transport links	Oxfordshire County Council			Strategic sites and Policy liaison	OCC, S&V	Joint Local Plan; Cowley Branch Line; Transport Evidence Base; Transport Strategy/Policy (zero emission zone/rail strategy); HLS update; Transport Schemes update; Garden Communities; SESRO; Neighbourhood Plan update; Government; Future Oxfordshire Partnership/OXIS/OX-Cam/EEH etc; Cross Boundary matters (Oxford City Local Plan, West Ox Local Plan, Cherwell Local Plan)	N/A
07/03/2024	The provision of infrastructure, including health, education, utilities, flood risk and strategic sustainable transport links	Oxfordshire County Council			JLP Transport work	OCC, S&V	Review comments on Evidence Base doc, SESRO considerations Scoping EIA	LD to work through comments on report
07/03/2024	Healthy Places	Oxfordshire County Council			Healthy Place shaping	OCC, S&V, Cherwell, West, Ox City	Discuss healthy place shaping in our Local Plans	N/A
11/03/2024	The provision of infrastructure, including health, education, utilities, flood risk and strategic sustainable transport links	Oxfordshire County Council			SATN Steering Group	OCC, Cherwell, Ox City, West, S&V	Discuss progress on OCC's project on SATN	N/A
12/03/2024	The provision of infrastructure,	Oxford City Council			Oxford Greenways	Ox City, SODC/VOWHDC, OCC	Review project scope and content	N/A

Date	Strategic Planning Matter	Engagement With:			Topic	All Bodies/ Parties Present	Purpose of meeting / key decisions made	Actions/next steps (related to Strategic Issue(s))
		Council	Prescribed body	Non-prescribed body				
	including health, education, utilities, flood risk and strategic sustainable transport links							
25/03/2024	The provision of infrastructure, including health, education, utilities, flood risk and strategic sustainable transport links	Oxfordshire County Council			Strategic sites and Policy liaison	OCC, S&V	Joint Local Plan; Playing Pitch Strategy; Cowley Branch Line; Transport Evidence Base; Transport Strategy/Policy (Workplace parking levy/rail strategy/staffing); HLS update; Transport Schemes update; Garden Communities; Water Policy; Neighbourhood Plan update; Government; Future Oxfordshire Partnership/OXIS/OX-Cam/EEH etc/OXIS; Cross Boundary matters (Oxford City Local Plan)	N/A
04/04/2024	Healthy Places	Oxfordshire County Council			Healthy Place shaping	OCC, S&V, Cherwell, West, Ox City	Discuss healthy place shaping in our Local Plans	N/A
25/04/2024	The provision of infrastructure, including health, education, utilities, flood risk and strategic sustainable transport links	Oxfordshire County Council			Strategic sites and Policy liaison	OCC, S&V	Joint Local Plan; Transport Evidence Base; Transport Strategy/Policy; HLS update; Transport Schemes update; Garden Communities; Water Policy; Neighbourhood Plan update; Government; Future Oxfordshire Partnership/OXIS/OX-Cam/EEH etc/OXIS; Cross Boundary matters	N/A
23/04/2024	The provision of infrastructure, including health, education, utilities, flood risk and strategic sustainable transport links	Oxfordshire County Council			Freight Steering Group	OCC, S&V	Discuss freight across Oxfordshire	N/A
25/04/2024	All matters	Wokingham Borough Council			Duty to Cooperate	Wokingham, S&V	Update from both authorities on Local Plan progress	N/A
30/04/2024	The provision of infrastructure, including health, education, utilities,	Oxfordshire County Council			IDP Workshop	OCC, S&V	IDP workshop	TR to update IDP work from feedback

Date	Strategic Planning Matter	Engagement With:			Topic	All Bodies/ Parties Present	Purpose of meeting / key decisions made	Actions/next steps (related to Strategic Issue(s))
		Council	Prescribed body	Non-prescribed body				
	flood risk and strategic sustainable transport links							
01/05/2024	Conserving and Enhancing our Natural and Historic Environments		Natural England		HRA	NE, UEEC, S&V	Discuss HRA for JLP	HRA joint review across Oxfordshire authorities
07/05/2024	Conserving and Enhancing our Natural and Historic Environments	Multiple LPAs			HRA at the OPPO meeting	City, Cherwell, West, OCC, S&V	Discuss Natural England request to have a joined-up approach to HRA	HRA to be developed jointly
08/05/2024	Multiple Strategic Planning Matters		Environment Agency		WCS and SFRA	Environment Agency, S&V, JBA, Wallingford HydroSolutions	Discussed WCS and SFRA approach	EA to review SFRA method statement
16/05/2024	The provision of infrastructure, including health, education, utilities, flood risk and strategic sustainable transport links	Oxfordshire County Council			Strategic sites and Policy liaison	OCC, S&V	Joint Local Plan; Cowley Branch Line; Transport Evidence Base; Transport Strategy/Policy (sustainable active travel network approval/rail strategy/OxRail 2024/Benson marina hub pilot/bus service improvement plan/Countywide multi-operator ticket/New OCC-operated bus services for rural communities); HLS update; Transport Schemes update; Garden Communities; Water Policy; Neighbourhood Plan update; Government; Future Oxfordshire Partnership/OXIS/OX-Cam/EEH etc/OXIS; Cross Boundary matters (SCGV/West Oxfordshire Plan/Cherwell Plan/Oxford City Local Plan)	N/A
22/05/2024	Conserving and Enhancing our Natural and Historic Environments	Multiple LPAs			HRA at the OPPO meeting	Ox City, Cherwell, West, OCC, S&V	Discuss joint working for HRA	HRA doc to be developed jointly
03/06/2024	Multiple Strategic Planning Matters		Environment Agency		SFRA method	EA, S&V (via email)	Advice given on SFRA method	N/A
06/06/2024	The provision of infrastructure, including health, education, utilities,	Oxfordshire County Council			JLP Transport work	OCC, S&V	Updates, Oxford City Local Plan, modelling update, IDP, SESRO	N/A

Date	Strategic Planning Matter	Engagement With:			Topic	All Bodies/ Parties Present	Purpose of meeting / key decisions made	Actions/next steps (related to Strategic Issue(s))
		Council	Prescribed body	Non-prescribed body				
	flood risk and strategic sustainable transport links							
06/06/2024	Conserving and Enhancing our Natural and Historic Environments	Multiple LPAs			HRA at the OPPO meeting	Ox City, Cherwell, S&V	Discuss needs for HRA combined work	N/A
06/06/2024	Healthy Places	Oxfordshire County Council			Healthy Place shaping	OCC, S&V, Cherwell, West, Ox City	Discuss healthy place shaping in our Local Plans	N/A
07/06/2024	The provision of infrastructure, including health, education, utilities, flood risk and strategic sustainable transport links		CCG/ICS (NHS)		IDP/Health	S&V, BOB ICB	Discuss IDP and Health in JLP	N/A
12/06/2024	The provision of infrastructure, including health, education, utilities, flood risk and strategic sustainable transport links		National Highways		Evidence base discussion	OCC, National Highways, S&V	Discuss emerging JLP	N/A
18/06/2024	The provision of infrastructure, including health, education, utilities, flood risk and strategic sustainable transport links	Oxfordshire County Council			Strategic sites and Policy liaison	OCC, S&V	Joint Local Plan; Cowley Branch Line; Transport Evidence Base; Transport Strategy/Policy (BSIP approval/area travel updates); HLS update; Transport Schemes update; Garden Communities; Water Policy; Neighbourhood Plan update; Government; Future Oxfordshire Partnership/OXIS/OX-Cam/EEH etc/OXIS; Cross Boundary matters (Oxford City Local Plan hearings)	N/A
26/06/2024	The provision of infrastructure, including health, education, utilities, flood risk and strategic sustainable transport links	Oxfordshire County Council			Cowley Branch line at Oxford	OCC, Ox City, S&V	Discuss CBL	N/A

Date	Strategic Planning Matter	Engagement With:			Topic	All Bodies/ Parties Present	Purpose of meeting / key decisions made	Actions/next steps (related to Strategic Issue(s))
		Council	Prescribed body	Non-prescribed body				
27/06/2024	Housing need and supply, including affordable housing, and the provision of sites for Gypsies and Travellers	Wiltshire			Gypsy and traveller need	Wiltshire, Dorset, South Gloucestershire, S&V, Gloucestershire, Hampshire, West Oxfordshire, West Berkshire	Wiltshire Gypsies and Travellers Development Plan Document Workshop Brief update on plan-making activity Discussion on cross-boundary matters	Need for SOCGs to be explored with neighbouring authorities during consultation period
02/07/2024	The provision of infrastructure, including health, education, utilities, flood risk and strategic sustainable transport links	Multiple		Sustrans	Oxford Greenways	Ox City, OCC, S&V, Sustrans, Cherwell, West	Project team updating on progress	N/A
16/07/2024	The provision of infrastructure, including health, education, utilities, flood risk and strategic sustainable transport links	Oxfordshire County Council			Strategic sites and Policy liaison	OCC, S&V	Joint Local Plan; Cowley Branch Line; Transport Evidence Base; Transport Strategy (Area Travel Plans/Recruitment/Science Vale Area Travel Plan/Engagement on SVATP/Abingdon LCWIP/OMM update); HLS update; Transport Schemes update; Benson relief road; Garden Communities; Water Policy; Neighbourhood Plan update; Government; Future Oxfordshire Partnership/OXIS/OX-Cam/EEH etc/OXIS; Cross Boundary matters (Puy Du Fou Theme Park proposal Cherwell Home/Oxford Flood alleviation scheme /CDC consulting on draft CIL charging schedule/WODC shortly consulting on their draft CIL charging schedule/West Oxfordshire Local Plan 2041 new proposed LDS)	Abingdon LCWIP to follow up separately
22/07/2024	The provision of infrastructure, including health, education, utilities, flood risk and strategic sustainable transport links	Oxfordshire County Council			JLP Transport work	OCC, S&V	Draft policies, IDP costings, Cowley Branch Line, supporting text review	N/A

Date	Strategic Planning Matter	Engagement With:			Topic	All Bodies/ Parties Present	Purpose of meeting / key decisions made	Actions/next steps (related to Strategic Issue(s))
		Council	Prescribed body	Non-prescribed body				
23/07/2024	The provision of infrastructure, including health, education, utilities, flood risk and strategic sustainable transport links	Multiple		Multiple Bus Operators	Bus Enhanced Partnership meeting	OCC, Ox Bus, Reading Bus, Ox City, Stagecoach, Cherwell, S&V	Review meeting minutes and discuss Enhanced Partnership review	N/A
08/08/2024	Multiple Strategic Planning Matters		Environment Agency		SFRA	S&V, Environment Agency (via email)	EA review of Level 1 SFRA and recommendations for Level 2	N/A
13/08/2024	Conserving and Enhancing our Natural and Historic Environments	All			Lowland fen evidence	All neighbouring authorities (via email)	Informed them that we are developing new lowland fen evidence and that it may identify potential for cross-boundary impacts	Further engagement with relevant authorities if potential cross-boundary impacts are identified. Will send update to neighbours as soon as practicable after Regulation 19 publication of the evidence if no immediate concerns raised
28/08/2024	Conserving and Enhancing our Natural and Historic Environments	Oxfordshire County Council			HRA	OCC, S&V	Discuss HRA joint document with OCC	OCC to amend document discussed. HRA has been progressing with collaboration to the best that Oxfordshire authorities can achieve given their different stages of plan-making, and further engagement with Natural England is needed in the Regulation 19 period prior to

Date	Strategic Planning Matter	Engagement With:			Topic	All Bodies/ Parties Present	Purpose of meeting / key decisions made	Actions/next steps (related to Strategic Issue(s))
		Council	Prescribed body	Non-prescribed body				
								submission of the JLP
09/09/2024	The provision of infrastructure, including health, education, utilities, flood risk and strategic sustainable transport links	Oxfordshire County Council			Strategic sites and Policy liaison	OCC, S&V	Joint Local Plan; Cowley Branch Line; Transport Evidence Base; Transport Strategy/Policy (OxRail2040 Rail Strategy / Review of Parking Standards); HLS update; Transport Schemes update; Garden Communities; Water Policy; Neighbourhood Plan update; Government (NPPF Consultation); Future Oxfordshire Partnership/OXIS/OX-Cam/EEH etc; Cross Boundary Matters;	To follow up on resourcing for SOCG
12/09/2024	Gypsies and travellers and general local plan updates	Oxfordshire Planning Policy Officers (all Oxfordshire authorities)			Gypsies and travellers and general local plan updates	All Oxfordshire authorities and Arc4 Consultancy	To discuss detailed matters regarding the emerging Oxfordshire GTAA and to give updates on progress of local plans in Oxfordshire	Technical follow up actions for Arc4, agreement to continue to work toward a shared statement of common ground on South and Vale JLP
13/09/2024	The provision of infrastructure, including health, education, utilities, flood risk and strategic sustainable transport links	Oxfordshire County Council	National Highways		Sharing of transport modelling to National Highways by email	OCC, S&V, National Highways	Sharing of transport modelling to National Highways by email	N/A
17/09/2024	The provision of infrastructure, including health, education, utilities, flood risk and strategic sustainable transport links		Environment Agency		Water Cycle Study Scoping Report	Environment Agency, S&V (by email)	Environment Agency review of WCS Scoping Report and recommendations for WCS Detailed Report.	Meet with EA to discuss WCS detailed report method in more detail
30/9/2024	Gypsies and travellers	All Oxfordshire authorities			Gypsies and travellers,	All Oxfordshire authorities and the GTAA consultant	To discuss the methodology and results and work towards finalising the GTAA	Further work by the consultant and engagement by the authorities

Date	Strategic Planning Matter	Engagement With:			Topic	All Bodies/ Parties Present	Purpose of meeting / key decisions made	Actions/next steps (related to Strategic Issue(s))
		Council	Prescribed body	Non-prescribed body				
10/10/2024	Gypsies and travellers, Habitat Regulation Assessment and general local plan updates	Oxfordshire Planning Policy Officers (all Oxfordshire authorities)			Gypsies and travellers, Habitat Regulation Assessment and general local plan updates	All Oxfordshire authorities	To discuss detailed matters regarding the emerging Oxfordshire GTAA, the work from South and Vale on their HRA, to give updates on progress of local plans in Oxfordshire	Technical follow up actions for GTAA, agreement to continue to work toward a shared statement of common ground on South and Vale JLP
15/10/24	Housing need and supply, employment need and supply, infrastructure provision, Green Belt, gypsies and travellers	Cherwell District Council			Housing need and supply, employment need and supply, infrastructure provision	Cherwell District Council and South and Vale District Councils	Joint Local Plan; Cherwell Local Plan Reg19; transport corridors and active travel; gypsy and traveller provision and discussions on the emerging GTAA for Oxfordshire; need for meaningful engagement with the Integrated Care Board; future collaboration on unmet need in Oxfordshire	Continued engagement to prepare a statement of common ground and need for ongoing discussions
22/10/2024	The provision of infrastructure, including health, education, utilities, flood risk and strategic sustainable transport links	Oxfordshire County Council			JLP Transport work	OCC, S&V	To discuss the Infrastructure Delivery Plan	N/A
24/10/2024	The provision of infrastructure, including health, education, utilities, flood risk and strategic sustainable transport links		Thames Water		SESRO	Thames Water, S&V	To discuss SESRO, Policy IN7 and Sewage Treatment Works	S&V to progress SOCG
25/10/2024	Gypsies and travellers	All Oxfordshire authorities			Gypsies and travellers,	All Oxfordshire authorities and the GTAA consultant	To discuss the methodology and results and work towards finalising the GTAA	Further work by the consultant and engagement by the authorities
05/11/2024	Housing need and supply, gypsies and travellers, employment need and supply,	Wokingham Borough Council			Housing need and supply, gypsies and travellers, infrastructure	Wokingham Borough Council and South and Vale District Councils	Joint Local Plan; Wokingham Local Plan; statement of common ground – and the need for Wokingham BC to see the GTAA before signing, confirmation from Wokingham that there is no unmet need	Both parties agreed to make written responses to each other's Reg19 plans, and to work

Date	Strategic Planning Matter	Engagement With:			Topic	All Bodies/ Parties Present	Purpose of meeting / key decisions made	Actions/next steps (related to Strategic Issue(s))
		Council	Prescribed body	Non-prescribed body				
	infrastructure provision						from them for employment, confirmation that growth in both local plan areas will not cause a need for infrastructure in each other's districts / boroughs, third Thames river crossing discussed.	towards signing a statement of common ground
06/11/2024	Conserving and Enhancing our Natural and Historic Environments		Natural England		HRA	Natural England, S&V	To discuss the HRA AA, and explanatory note to the in-combination assessment	S&V to undertake HRA in combination work
07/11/2024	Local Nature Recovery Strategy (LNRS), gypsies and travellers, and general local plan updates	Oxfordshire Planning Policy Officers (all Oxfordshire authorities)			Gypsies and travellers, LNRS, and general local plan updates	All Oxfordshire authorities	To discuss detailed matters regarding the emerging Oxfordshire GTAA, the LNRS, to give updates on progress of local plans in Oxfordshire	Technical follow up actions for GTAA, agreement to continue to work toward a shared statement of common ground on South and Vale JLP
11/11/2024	The provision of infrastructure, including health, education, utilities, flood risk and strategic sustainable transport links	Oxfordshire County Council			Strategic sites and Policy liaison	OCC, S&V	To discuss JLP consultation, SOCG, appeal sites and JLP submission timescales.	N/A
13/11/2024	Gypsies and travellers	All Oxfordshire authorities			Gypsies and travellers,	All Oxfordshire authorities and the GTAA consultant	To discuss the methodology and results and work towards finalising the GTAA	Further work by the consultant and engagement by the authorities
25/11/2024	Cross boundary matters	Swindon BC			SOCCG	Swindon BC, S&V	To discuss re-engaging in liaison meetings between SBC, S&V, and OCC. Also to discuss the SOCCG	To send draft OCG to SBC
28/11/2024	Employment need and supply, housing need and supply, lowland fen mapping, infrastructure	Oxford City Council			Employment need and supply, housing need and supply, lowland fen	Oxford City Council and South and Vale District Councils	Joint Local Plan; Oxford City Local Plan 2040; Employment need and supply; housing need and supply; ringfencing sites for Oxford's unmet housing need; changes to the policies map regarding lowland fen, infrastructure – Cowley	Continued engagement to prepare a statement of common ground and need for

Date	Strategic Planning Matter	Engagement With:			Topic	All Bodies/ Parties Present	Purpose of meeting / key decisions made	Actions/next steps (related to Strategic Issue(s))
		Council	Prescribed body	Non-prescribed body				
					mapping, infrastructure		Branch Line, and Oxford Sewage Treatment Works	ongoing discussions
28/11/2024	The provision of infrastructure, strategic sustainable transport links	Oxfordshire County Council	National Highways		SOCG	National Highways, S&V	To discuss the findings of the traffic modelling and agreement for SOCG	S&V to share draft SOCG
4/12/2024	Conserving and Enhancing our Natural and Historic Environments		Natural England		HRA	Natural England, S&V	To discuss the SOCG, HRA AA, and explanatory note to the in combination assessment	S&V to undertake further HRA work to support the JLP post submission
5/12/2024	Gypsies and travellers, Habitats Regulations Assessment and general local plan updates	Oxfordshire Planning Policy Officers (all Oxfordshire authorities)			Gypsies and travellers, Habitats Regulations Assessment and general local plan updates	All Oxfordshire authorities	To discuss detailed matters regarding the emerging Oxfordshire GTAA, the work from South and Vale on their HRA, to give updates on progress of local plans in Oxfordshire	Agreement to continue to work toward a shared statement of common ground on South and Vale JLP
9/12/2024	The provision of infrastructure, including health, education, utilities, flood risk and strategic sustainable transport links	Oxfordshire County Council			Strategic sites and Policy liaison	OCC, S&V	County liaison meeting covering JLP update (submission), SOCG, Education topic paper	N/A

APPENDIX 1

Assessment of Oxford City Council's Regulation 19 representations in terms of DtC 'strategic matters'

Appendix 1: Assessment of Oxford City Council’s Regulation 19 representations in terms of DtC ‘strategic matters’

This appendix contains a review of Oxford City Council’s Regulation 19 response to the Joint Local Plan, focusing on whether it raises Duty to Co-operate matters. Oxford City Council raised matters during the Regulation 19 publication period that they had not previously raised, and we have therefore assessed their representation to understand and present the key criticisms. The summary table below shows key issues, and an assessment from the councils as to whether we believe this is a Strategic Matter, in terms of giving rise to significant impacts on at least two planning areas. It also includes what appropriate actions could be taken to address them, or whether no action needs to take place (for example, where criticisms are not supported by evidence or a non-strategic matters).

The actions include discussing in a meeting with Oxford before submission (on 28 November 2024, and if necessary at OPPO on 5 December 2024), updating our [Statement of Compliance with the Duty to Cooperate \(Reg 19 version\)](#), or adding wording to either the draft Joint Oxfordshire-wide Statement of Common Ground or a bilateral SoCG with Oxford City (which they have indicated willingness to work on although this is now likely to be post-submission).

Ref	Summary of issue raised by Oxford	A) Potentially strategic matter? Is there development proposed by the JLP relevant to that topic, which it could be fairly claimed that if that development takes place, will result in significant impacts on both Oxford and on South Oxfordshire or Vale of White Horse?	B) Potentially strategic matter? Is there any need identified in the evidence base which the JLP does not propose to address, that will result in significant impacts on both Oxford and on South Oxfordshire or Vale of White Horse?	Action
1	South Oxfordshire & Vale of White Horse Councils have not identified all relevant strategic matters or engaged.	<p>No - This topic does not result in significant impacts on both Oxford and on South Oxfordshire & Vale of White Horse.</p> <p>The representation doesn’t provide evidence to demonstrate that the councils haven’t engaged on strategic matters, and is contrary to the evidence supporting the JLP.</p>	No – JLP generates no unmet need.	<ul style="list-style-type: none"> Discussed at an officer meeting between Oxford City Council and South Oxfordshire & Vale of White Horse District Councils on 28 November 2024. Discussed in letter from South Oxfordshire and Vale of White Horse Chief

Ref	Summary of issue raised by Oxford	A) Potentially strategic matter? Is there development proposed by the JLP relevant to that topic, which it could be fairly claimed that if that development takes place, will result in significant impacts on both Oxford and on South Oxfordshire or Vale of White Horse?	B) Potentially strategic matter? Is there any need identified in the evidence base which the JLP does not propose to address, that will result in significant impacts on both Oxford and on South Oxfordshire or Vale of White Horse?	Action
				<p>Executive Officer to Oxford City Chief Executive Officer on 26 November 2024.</p> <ul style="list-style-type: none"> • Duty to Cooperate Statement updated.
2	<p>South Oxfordshire & Vale of White Horse Councils did not discuss employment evidence with Oxford City Council.</p>	<p>No - This topic does not result in significant impacts on both Oxford and on South Oxfordshire & Vale of White Horse.</p> <p>Oxford City Council had the opportunity to discuss at the Oxfordshire Planning Policy Officer meetings (but did not raise this issue). Furthermore, Oxford commented on South Oxfordshire and Vale of White Horse Employment Land Needs Assessment (ELNA) at our Preferred Options (Regulation 18 Part 2) Consultation in early 2024.</p>	<p>No – JLP generates no unmet need.</p>	<ul style="list-style-type: none"> • Discussed at an officer meeting between Oxford City Council and South Oxfordshire & Vale of White Horse District Councils on 28 November 2024. • Duty to Cooperate Statement updated.
3	<p>There is a significant supply of employment land with significant employment</p>	<p>No – This topic does not result in significant impacts on both Oxford and on South Oxfordshire & Vale of White</p>	<p>No – JLP generates no unmet need.</p>	<ul style="list-style-type: none"> • Discussed at an officer meeting between Oxford City

Ref	Summary of issue raised by Oxford	A) Potentially strategic matter? Is there development proposed by the JLP relevant to that topic, which it could be fairly claimed that if that development takes place, will result in significant impacts on both Oxford and on South Oxfordshire or Vale of White Horse?	B) Potentially strategic matter? Is there any need identified in the evidence base which the JLP does not propose to address, that will result in significant impacts on both Oxford and on South Oxfordshire or Vale of White Horse?	Action
	<p>allocations. This hasn't been balanced against housing need or assessed for its impacts, nor discussed. This implies a new higher jobs growth number is likely, which will have consequential impacts on housing need.</p>	<p>Horse. Oxford City Council are not correct on significant increased jobs numbers, and the JLP makes no new significant employment allocations. The supply of employment land is high to address needs. Furthermore, many of our existing employment sites have capacity for more employment uses on them. The JLP does not assert that all this employment land will be delivered by 2041.</p> <p>The Joint Housing Needs Assessment considers the relationship between job growth and housing, and concludes that "<i>[the relationship] is consistent with achieving a balance between the number of workers in the areas and the number of jobs when sustainable commuting flows have been allowed for.</i>" (Paragraph 4, Executive Summary).</p> <p>The ELNA shows that more commute out of South Oxfordshire and Vale of White Horse than commute in, with Oxford being the highest outflow</p>		<p>Council and South Oxfordshire & Vale of White Horse District Councils on 28 November 2024.</p> <ul style="list-style-type: none"> • Duty to Cooperate Statement updated.

Ref	Summary of issue raised by Oxford	A) Potentially strategic matter? Is there development proposed by the JLP relevant to that topic, which it could be fairly claimed that if that development takes place, will result in significant impacts on both Oxford and on South Oxfordshire or Vale of White Horse?	B) Potentially strategic matter? Is there any need identified in the evidence base which the JLP does not propose to address, that will result in significant impacts on both Oxford and on South Oxfordshire or Vale of White Horse?	Action
		destination. We therefore need a sufficient supply needed to help reduce/keep in check sustainable commuter flows.		
4	Errors in Employment Land Needs Assessment (ELNA).	No - This topic does not result in significant impacts on both Oxford and on South Oxfordshire & Vale of White Horse. Table sources the same dataset but in different ways (one presents total floorspace as at 2023, the other offsets vacant buildings against occupied ones, so may not be reliably presented in the dataset).	No – JLP generates no unmet need.	<ul style="list-style-type: none"> The councils have checked the validity of the figures with AECOM & confirmed no update is required.
5	The Duty to Co-operate statement shouldn't conclude that employment issues don't exist.	No - This topic does not result in significant impacts on both Oxford and on South Oxfordshire & Vale of White Horse. The Duty to Cooperate statement can be edited for clarity.	No – JLP generates no unmet need.	<ul style="list-style-type: none"> Duty to Cooperate Statement updated.
6	Question including Oxford in the Functional Economic Market Area (FEMA).	No – This topic does not result in significant impacts on both Oxford and on South Oxfordshire & Vale of White Horse. This is not a new issue as Oxford was in the FEMA before, and inclusion within the FEMA has no	No – JLP generates no unmet need.	<ul style="list-style-type: none"> Duty to Cooperate Statement updated.

Ref	Summary of issue raised by Oxford	A) Potentially strategic matter? Is there development proposed by the JLP relevant to that topic, which it could be fairly claimed that if that development takes place, will result in significant impacts on both Oxford and on South Oxfordshire or Vale of White Horse?	B) Potentially strategic matter? Is there any need identified in the evidence base which the JLP does not propose to address, that will result in significant impacts on both Oxford and on South Oxfordshire or Vale of White Horse?	Action
		significant impact. The FEMA is defined objectively using standardised definitions and methods, so inclusion is not based on a subjective appraisal. Including Oxford in the FEMA shows that that the ELNA (and therefore the policies which it informs) <i>has</i> taken Oxford's circumstances into account.		
7	Concern about the lack of a separate housing requirement for Oxford's unmet housing need.	No – This topic does not result in significant impacts on both Oxford and on South Oxfordshire & Vale of White Horse. This is no change to the approach in the adopted local plans in South Oxfordshire and Vale of White Horse.	No – JLP generates no unmet need; the JLP accommodates the agreed unmet need from Oxford, any additional need has not been soundly evidenced by Oxford, is unquantified in extent and will now be a matter for Oxford's next local plan in the first instance.	<ul style="list-style-type: none"> • Discussed at an officer meeting between Oxford City Council and South Oxfordshire & Vale of White Horse District Councils on 28 November 2024. • Duty to Cooperate Statement updated.
8	Concern about lack of specified sites for Oxford's unmet housing need.	No – This topic does not result in significant impacts on both Oxford and on South Oxfordshire & Vale of White Horse. This is no change to the approach in the adopted local plans in South Oxfordshire and Vale of White Horse.	No – JLP generates no unmet need; the JLP accommodates the agreed unmet need from Oxford, any additional need has not been soundly evidenced by Oxford, is unquantified in extent and will now	<ul style="list-style-type: none"> • Discussed at an officer meeting between Oxford City Council and South Oxfordshire & Vale of White Horse District

Ref	Summary of issue raised by Oxford	A) Potentially strategic matter? Is there development proposed by the JLP relevant to that topic, which it could be fairly claimed that if that development takes place, will result in significant impacts on both Oxford and on South Oxfordshire or Vale of White Horse?	B) Potentially strategic matter? Is there any need identified in the evidence base which the JLP does not propose to address, that will result in significant impacts on both Oxford and on South Oxfordshire or Vale of White Horse?	Action
			be a matter for Oxford's next local plan in the first instance.	Councils on 28 November 2024.
9	Concern about the approach of using an annualised level of unmet need from the current plans and transferring it to the JLP and adding to the overall housing requirement, and point that unmet need should be met by 2036.	No – This topic does not result in significant impacts on both Oxford and on South Oxfordshire & Vale of White Horse. This is no change to the approach in the adopted local plans in South Oxfordshire and Vale of White Horse. This is consistent with the approach of others in Oxfordshire.	No – JLP generates no unmet need; the JLP accommodates the agreed unmet need from Oxford, any additional need has not been soundly evidenced by Oxford, is unquantified in extent and will now be a matter for Oxford's next local plan in the first instance.	<ul style="list-style-type: none"> • None.
10	JLP has no trajectory to confirm delivery of Oxford's unmet housing need, and concern the JLP is no longer anticipating original levels of homes to be delivered on unmet need sites within plan period.	No – Agreed unmet need forms part of the overall housing requirement for each council, and is addressed through a supply of sites across the districts. There is no requirement in the NPPF (nor in the existing local plans) for a ring-fenced supply to meet a ring-fenced need. The existence of whether there is unmet need post 2036 is uncertain in the context of Oxford's failed local plan recently. The councils have produced a site-by-site trajectory for JLP	No – JLP generates no unmet need; the JLP accommodates the agreed unmet need from Oxford, any additional need has not been soundly evidenced by Oxford, is unquantified in extent and will now be a matter for Oxford's next local plan in the first instance.	<ul style="list-style-type: none"> • The councils have produced a site-by-site trajectory for the JLP covering the period 2021 to 2041 (see Housing Requirement Topic Paper). • Discussed at an officer meeting between Oxford City Council and South

Ref	Summary of issue raised by Oxford	A) Potentially strategic matter? Is there development proposed by the JLP relevant to that topic, which it could be fairly claimed that if that development takes place, will result in significant impacts on both Oxford and on South Oxfordshire or Vale of White Horse?	B) Potentially strategic matter? Is there any need identified in the evidence base which the JLP does not propose to address, that will result in significant impacts on both Oxford and on South Oxfordshire or Vale of White Horse?	Action
		submission in the housing requirement topic paper (with some thought given how best to present the Oxford unmet need).		Oxfordshire & Vale of White Horse District Councils on 28 November 2024.
11	Proposed mix and affordable housing tenure splits are not aligned with those in Oxford City.	<p>No – This topic does not result in significant impacts on both Oxford and on South Oxfordshire and Vale of White Horse.</p> <p>As set out above in relation to the supply of housing for unmet need, there is no requirement in the NPPF, or our adopted local plans for the proposed mix and affordable housing tenure splits to align with those of the exporting local authority.</p> <p>Furthermore, Oxford doesn't have a new adopted plan which changes the tenure splits. Our sites make a contribution for Oxford but are not explicitly set aside for Oxford's unmet need.</p>	No – JLP generates no unmet need; the JLP accommodates the agreed unmet need from Oxford, any additional need has not been soundly evidenced by Oxford, is unquantified in extent and will now be a matter for Oxford's next local plan in the first instance.	<ul style="list-style-type: none"> Discussed at an officer meeting between Oxford City Council and South Oxfordshire & Vale of White Horse District Councils on 28 November 2024. Duty to Cooperate Statement updated.
12	Lowland Fens evidence - informed that cross-boundary	No – This topic does not result in significant impacts on both Oxford and	No – JLP generates no unmet need	<ul style="list-style-type: none"> Duty to Cooperate Statement updated

Ref	Summary of issue raised by Oxford	A) Potentially strategic matter? Is there development proposed by the JLP relevant to that topic, which it could be fairly claimed that if that development takes place, will result in significant impacts on both Oxford and on South Oxfordshire or Vale of White Horse?	B) Potentially strategic matter? Is there any need identified in the evidence base which the JLP does not propose to address, that will result in significant impacts on both Oxford and on South Oxfordshire or Vale of White Horse?	Action
	impacts identified after publication.	<p>on South Oxfordshire or Vale of White Horse.</p> <p>It is not true that Oxford has been 'informed of cross boundary impact' as the study only identifies where there's potential for impacts - to be explored in more detail, at planning application stage, on a site-by-site basis. Our records show we invited Oxford to discuss our approach in detail, explained when outputs would be ready, and asked if they had any questions about the commission before it concluded. The councils consider that any concerns can be addressed in a guidance note.</p>		
13	Lowland Fens evidence methodology concern, not justified or effective thresholds, unclear terms, and potential for harm unclear.	No – This topic does not result in significant impacts on both Oxford and on South Oxfordshire or Vale of White Horse. The report only reports on potential for impact which needs to be explored at the planning application stage. It is not a block on development, and as such raises no significant impacts.	No – JLP generates no unmet need.	<ul style="list-style-type: none"> Discussed at an officer meeting between Oxford City Council and South Oxfordshire & Vale of White Horse District Councils on 28 November 2024.

Ref	Summary of issue raised by Oxford	A) Potentially strategic matter? Is there development proposed by the JLP relevant to that topic, which it could be fairly claimed that if that development takes place, will result in significant impacts on both Oxford and on South Oxfordshire or Vale of White Horse?	B) Potentially strategic matter? Is there any need identified in the evidence base which the JLP does not propose to address, that will result in significant impacts on both Oxford and on South Oxfordshire or Vale of White Horse?	Action
				<ul style="list-style-type: none"> • Duty to Cooperate Statement updated.
14	Sustainability Appraisal has mostly environmental objectives which unreasonably skews the assessment and likely positive effects of planning for development are under-represented.	No – This topic does not result in significant impacts on both Oxford and on South Oxfordshire or Vale of White Horse. The councils’ SA has an appropriate environmental focus.	No – JLP generates no unmet need.	<ul style="list-style-type: none"> • None.
15	Sustainability Appraisal has no baseline as context to “the likely future without the plan” (a legal requirement of SA).	No - This topic is concerned with the baseline without the implementation of the JLP and an Addendum is proposed to ensure that scenario is addressed. The development proposed by the JLP does not result in significant impacts on both Oxford and on South Oxfordshire or Vale of White Horse.	No – JLP generates no unmet need.	<ul style="list-style-type: none"> • The councils have published an Addendum to the Sustainability Appraisal Scoping Report.
16	Policies CE2 – Net zero carbon buildings and Policy CE3 – Reducing embodied carbon, criticises policy	No - This topic does not result in significant impacts on both Oxford and on South Oxfordshire or Vale of White Horse.	No – JLP generates no unmet need	<ul style="list-style-type: none"> • None.

Ref	Summary of issue raised by Oxford	A) Potentially strategic matter? Is there development proposed by the JLP relevant to that topic, which it could be fairly claimed that if that development takes place, will result in significant impacts on both Oxford and on South Oxfordshire or Vale of White Horse?	B) Potentially strategic matter? Is there any need identified in the evidence base which the JLP does not propose to address, that will result in significant impacts on both Oxford and on South Oxfordshire or Vale of White Horse?	Action
	wording as being not effective.			
17	Not sufficiently tested the option of looking at an alternative method for calculating the housing requirement.	No – This topic does not result in significant impacts on both Oxford and on South Oxfordshire or Vale of White Horse. It’s a justified ‘appropriate strategy’ for establishing the housing requirement as required by NPPF paragraph 35. There are no justifications which amount to exceptional circumstances for an alternative. This matter was also discussed in detail at the Oxford Local Plan 2040 examination hearings, with the Inspectors for that plan concluding: “ <i>There is no clear justification in this case for departing from the standard method, exceptional circumstances do not exist.</i> ” (Paragraph 47).	No – JLP generates no unmet need; the JLP accommodates the agreed unmet need from Oxford, any additional need has not been soundly evidenced by Oxford, is unquantified in extent and will now be a matter for Oxford's next local plan in the first instance.	<ul style="list-style-type: none"> • None.
18	Failure to acknowledge detrimental effect of lack of housing within options and SA.	No - This topic does not result in significant impacts on both Oxford and on South Oxfordshire and Vale of White Horse. We don’t agree with the	No – JLP generates no unmet need; the JLP accommodates the agreed unmet need from Oxford, any additional need has not been	<ul style="list-style-type: none"> • None.

Ref	Summary of issue raised by Oxford	A) Potentially strategic matter? Is there development proposed by the JLP relevant to that topic, which it could be fairly claimed that if that development takes place, will result in significant impacts on both Oxford and on South Oxfordshire or Vale of White Horse?	B) Potentially strategic matter? Is there any need identified in the evidence base which the JLP does not propose to address, that will result in significant impacts on both Oxford and on South Oxfordshire or Vale of White Horse?	Action
		<p>characterisation of the SA as options were tested, and presented as part of our Preferred Options Consultation (Regulation 18 Part 2). We tested 3 alternatives to the standard method: Option B – maintaining our existing levels of housing need, Option C – using only the Standard Method without an uplift for the agreed unmet need from Oxford, and Option D – commissioning a new housing needs assessment.</p>	<p>soundly evidenced by Oxford, is unquantified in extent and will now be a matter for Oxford's next local plan in the first instance.</p>	
19	<p>Justified to argue that First Homes are not appropriate.</p>	<p>No - This topic does not result in significant impacts on both Oxford and on South Oxfordshire and Vale of White Horse. We have local justification for approach to first homes.</p>	<p>No – JLP generates no unmet need.</p>	<ul style="list-style-type: none"> • None.
20	<p>Policy HOU4 - Housing mix and size: Percentage mixes don't take account of needs on the housing list for both market and affordable housing. Policy does not account for the needs of</p>	<p>No - This topic does not result in significant impacts on both Oxford and on South Oxfordshire and Vale of White Horse. Oxford is seeking a rigid policy rather than a more appropriate approach that enables decisions to have regard to the housing list. The</p>	<p>No – JLP generates no unmet need.</p>	<ul style="list-style-type: none"> • Discussed at an officer meeting between Oxford City Council and South Oxfordshire & Vale of White Horse District

Ref	Summary of issue raised by Oxford	A) Potentially strategic matter? Is there development proposed by the JLP relevant to that topic, which it could be fairly claimed that if that development takes place, will result in significant impacts on both Oxford and on South Oxfordshire or Vale of White Horse?	B) Potentially strategic matter? Is there any need identified in the evidence base which the JLP does not propose to address, that will result in significant impacts on both Oxford and on South Oxfordshire or Vale of White Horse?	Action
	those on Oxford's housing list.	councils and Oxford have signed Memorandums of Understanding (MoU) on the apportionment of affordable housing to those on Oxford's housing list. In these MoU, the councils agree that there is flexibility in the nominations process for unmet needs of Oxford in South Oxfordshire and Vale of White Horse.		Councils on 28 November 2024. • Duty to Cooperate Statement updated.
21	Housing for older people, self and custom build and Gypsies and Travellers requirements are not required on sites to meet Oxford's needs. It reduces capacity for unmet need.	No – This topic does not result in significant impacts on both Oxford and on South Oxfordshire and Vale of White Horse. The JLP does not identify specific housing sites to meet Oxford's unmet housing needs. There is capacity on our allocated sites to deliver the range of land uses set out in our allocation policies, including space to deliver Gypsy and Traveller pitches and older person's accommodation. We have not reduced housing numbers on the sites with a strong spatial relationship with Oxford, and therefore there is no impact.	No – JLP generates no unmet need; the JLP accommodates the agreed unmet need from Oxford, any additional need has not been soundly evidenced by Oxford, is unquantified in extent and will now be a matter for Oxford's next local plan in the first instance.	• Discussed at an officer meeting between Oxford City Council and South Oxfordshire & Vale of White Horse District Councils on 28 November 2024. • Duty to Cooperate Statement updated.

Ref	Summary of issue raised by Oxford	A) Potentially strategic matter? Is there development proposed by the JLP relevant to that topic, which it could be fairly claimed that if that development takes place, will result in significant impacts on both Oxford and on South Oxfordshire or Vale of White Horse?	B) Potentially strategic matter? Is there any need identified in the evidence base which the JLP does not propose to address, that will result in significant impacts on both Oxford and on South Oxfordshire or Vale of White Horse?	Action
		Furthermore, the adopted South Oxfordshire Local Plan 2035 already includes a requirement for 3% of homes to be provided as self-and custom build plots on the large strategic allocations. Their provision has been agreed in the resolution to grant outline planning consent on the Land north of Bayswater Brook site (P22/S4618/O).		
22	No evidence about why Gypsy and Traveller sites on edge of Oxford sites are the most suitable, and impact on viability.	No – This topic does not result in significant impacts on both Oxford and on South Oxfordshire and Vale of White Horse. It is a justified ‘appropriate strategy’ for distribution of the Gypsy and Traveller requirement as required by NPPF paragraph 35. It is same approach as in the adopted South Oxfordshire Local Plan.	No – JLP generates no unmet need.	<ul style="list-style-type: none"> • Housing topic paper updated to set out the lengths we’ve gone through to address the need through alternatives.
23	Include Cowley Branch Line as a mitigation scheme.	No – This topic does not result in significant impacts on both Oxford and on South Oxfordshire or Vale of White Horse. This is the same approach on Cowley Branch Line as in the adopted	No – JLP generates no unmet need.	<ul style="list-style-type: none"> • None.

Ref	Summary of issue raised by Oxford	A) Potentially strategic matter? Is there development proposed by the JLP relevant to that topic, which it could be fairly claimed that if that development takes place, will result in significant impacts on both Oxford and on South Oxfordshire or Vale of White Horse?	B) Potentially strategic matter? Is there any need identified in the evidence base which the JLP does not propose to address, that will result in significant impacts on both Oxford and on South Oxfordshire or Vale of White Horse?	Action
		South Oxfordshire Local Plan. There is no case for it as mitigation scheme, and the councils are not currently aware of any evidence that shows this would meet Regulation 122 of the Community Infrastructure Levy Regulations 2010.		
24	Policy DE4 Optimising Densities is vague, not evidenced and 45dhp too low for delivery of unmet need.	No – This topic does not result in significant impacts on both Oxford and on South Oxfordshire or Vale of White Horse. The comment does not recognise bespoke approach to densities for allocated sites with a strong spatial relationship to Oxford. Policy DE4 requirements are locally evidenced.	No – JLP generates no unmet need.	<ul style="list-style-type: none"> • None.

APPENDIX 2

**Letter from South and Vale's Chief Executive to Oxford City's Chief Executive
dated 26 November 2024**

Caroline Green
Chief Executive
Oxford City Council
Oxford Town Hall
St Aldates
Oxford
OX1 1BX

Mark Stone
Chief Executive

executivesupportsav@southandvale.gov.uk
Tel: 01235 422422
Textphone: 18001 01235 422422

Abbey House,
Abbey Close,
Abingdon,
Oxon,
OX14 3JE

26 November 2024

Dear Caroline,

South Oxfordshire and Vale of White Horse Joint Local Plan 2041

1. I refer to the representations dated 12 November 2024 that Oxford City Council (Oxford) submitted to the Proposed Submission version of the Joint Local Plan 2041 (the JLP). As I expect you know, those representations seek to suggest that there has been non-compliance by South Oxfordshire and Vale of White Horse District Councils (the Councils) with the legal duty to co-operate in the preparation of the JLP. That contention is not accepted by the Councils and it is disappointing that Oxford has seen fit to make such a suggestion for the first time at such a late stage in the preparation of the JLP, noting that no such claim was made in Oxford's earlier consultation responses or in the successive Oxfordshire Planning Policy Officers group (OPPO) meetings, where there has been considerable opportunity for raising this.
2. The purpose of this letter is not to enter into detailed arguments about that matter but, in summary terms, the Councils consider that there has been more than sufficient engagement with Oxford on all strategic matters that fall within the scope of the duty (noting, of course, that in contrast to the position with the OLP the JLP does not seek to identify any unmet needs that are sought to be displaced elsewhere). In the Councils' assessment, the issues raised by Oxford are matters potentially relating to soundness and not to the duty to co-operate and these are issues that it should be possible to explore (and hopefully resolve) in the on-going dialogue on a statement of common ground.

3. Instead, the purpose of this letter is to seek to understand what Oxford now intends to do in relation to its own Oxford Local Plan 2040 (the OLP) and future plan-making for its area, having regard to the most recent letter from the OLP examining Inspectors, dated 20 November 2024.
4. Of course, it is unfortunate that the Inspectors were faced with having to decide whether the duty to co-operate had been complied with by Oxford in the preparation of the OLP, but that situation arose from Oxford's decision to submit the OLP for examination at a time when the Councils had urged that that step should not be taken. No doubt you will recall that in my letter to you dated 19 January 2024 (some two months before the OLP was submitted for independent examination), I stated:

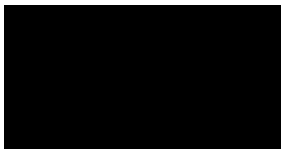
“Our recent representations to your Regulation 19 stage Local Plan 2040 [i.e. the OLP] reiterate our earlier responses to state that, as matters stand at present, your emerging Local Plan fails the legal duty to co-operate...”

We would ask you to reflect carefully on your current intentions to submit your Regulation 19 local plan, as presently formulated, for independent examination and would ask that instead, you engage with us on a more appropriate and productive way forward...”

5. Notwithstanding that clearly expressed concern about the duty to co-operate (which echoes the point made in our letter dated 17 March 2023 in response to the Regulation 18 consultation on the OLP) and that explicit request for engagement on a more appropriate and productive way forward, Oxford proceeded to submit the OLP shortly thereafter and there was no such engagement on any alternative approach to the matters where it was apparent that Oxford and the Councils were not in agreement. Those disagreements were therefore, regrettably, played out in front of the OLP examining Inspectors, with the results that we have seen, as expressed in their letters dated 11 September 2024 and 20 November 2024. Those letters confirm that the Councils were justified in the concerns they raised and that there was a failure of the duty to co-operate by Oxford in the preparation of the OLP. I make these points not for the purpose of vindication of the Councils' actions but to highlight that the outcome was one that the Councils sought to avoid so far as they reasonably could.
6. I appreciate that when it became clear in September 2024 that the OLP examining Inspectors shared the concerns raised by the Councils, Oxford in the first instance sought (in its letter dated 25 September 2024) to invite the Inspectors to review or amend their findings, but it is now clear from the letter dated 20 November 2024 that there will be no change to the Inspectors' conclusions. The OLP has, therefore, sadly but predictably reached the end of the road.

7. That then leads us to the position of what Oxford will do now. The letter dated 20 November 2024 presents Oxford with a choice in terms of procedural routes to be followed, but they both lead to the same result, namely that the OLP will not proceed to become an adopted local plan. Whilst the decision on that choice is obviously a matter for Oxford's full council, I understand that at the OPPO meeting on 7 November 2024 it was indicated that Oxford will be making that decision in January 2025 based on advice from its officers. I also understand that meetings of Oxford's cabinet and full council are scheduled for 26 and 27 January 2025. Are you able to tell me at this stage what Oxford will be advised by officers to do, or (if not), when you will be in a position to do so?
8. In addition, on the reasonable assumption that the OLP will not now progress further, I would be grateful if you can inform me what steps Oxford will be invited to take as regards future plan-making and the timetable for that.
9. Notwithstanding the earlier disagreements between Oxford and the Councils on how to assess and meet needs, which were ventilated at the OLP examination, I assume that, for a whole variety of reasons (not least the Inspectors' findings and the proposed new National Planning Policy Framework), Oxford will be starting afresh in how it seeks to identify the needs that should be met by any new local plan and that, at present, no work has been done in that regard. I would be grateful if you could confirm this assumption or, if not, share any work that Oxford has undertaken to quantify its needs and how they are to be met.
10. I ask these questions because, as you are aware, the Councils are working to submit the JLP for examination before Christmas 2024, and it would be helpful to understand the latest position with the OLP and any replacement for it before they do so. An early response would be appreciated.
11. Separately, I understand that planning officers at both the Councils and Oxford are engaged in the preparation of one or more statements of common ground for the purposes of the JLP and that that exercise is proceeding. I am grateful to Oxford for its involvement in that process and the requests in this letter should not be seen as superseding or replacing that on-going dialogue.

Yours sincerely



Mark Stone
Chief Executive

APPENDIX 3

**Letter from Oxford City's Chief Executive to South and Vale's Chief Executive
dated 2 December 2024**

Caroline Green
Chief Executive, Oxford City Council
Tel: 01865 252562
Email: cgreen@oxford.gov.uk
Website: www.oxford.gov.uk

Chief Executive's Office
Town Hall
Oxford
OX1 1BX
Switchboard: 01865 249811

www.oxford.gov.uk



Mark Stone
Chief Executive
South and Vale District Council
Abbey House
Abingdon OX 14 3JE

2 December 2024

SENT VIA EMAIL

Dear Mark

South Oxfordshire and Vale of White Horse Joint Local Plan 2041

Thank you for your letter dated 26 November 2024. I can confirm that Oxford City Council remains committed to working closely with neighbouring districts with regards to the matters you raise. The City Council continues to work with partners and stakeholders in a positive and proactive way to resolve identified issues which are affecting us all. I also note your comments about the proposed Oxford Local Plan 2040 (OLP2040), which I have addressed at the end of this letter.

With regards to the Duty to Cooperate in respect of your Joint Local Plan 2041 (JLP2041), Oxford City Council is surprised by the assertions made in your letter, especially within the context of comments made by South Oxfordshire and Vale of White Horse District Councils (South and Vale) on the preparation of the Oxford Local Plan 2040. Our comments in our representations and again here are made on the basis that the duty to cooperate applies to all cross boundary strategic matters, not solely in consideration of unmet need.

A significant number of strategic issues were identified in your Duty to Cooperate Scoping Note (2022), and many of these have been dismissed later in the process, on the basis that since there would be no unmet need, engagement did not need to take place. The scoping note however does say that Oxford City Council will be engaged with on a wide range of matters at various points of plan-making, including when evidence was being scoped and prior to publication. We have identified a number of issues which clearly still remain as duty to cooperate issues about which we ought to have been engaged with, but were not. The onus is not on us to identify issues that may be arising from your plan (although we did when given the opportunity).

There are a number of specific Duty to Cooperate Points which I would like to take this opportunity to address in the order you have raised them in your letter. Firstly, with regards to the timing of the comments being made by the City Council, it is entirely reasonable for us to have identified issues with the preparation of the JLP2041 when it was formally published for public consultation. That is the purpose of public consultation. The suggestion that all of these concerns should have been raised by us earlier in the process is particularly a surprise in the context of our previous comments at the Regulation 18 stage. Having regard to the level of detail and associated evidence base being published at your Regulation 18 stage, we proactively sought to raise areas of concern with you.



To sign up to receive news from Oxford City Council straight to your inbox scan the QR code

Oxford City Council, PO Box 10, Oxford, OX1 1EN



Unfortunately, South and Vale have not engaged the City Council on those matters which we previously raised and moreover have not fully addressed these in the submission draft of the JLP2041, for reasons which have not been explored with us in the context of s.33A engagement. Amongst those issues raised initially in our Regulation 18 response, which we then needed to raise again at Regulation 19 because they had not been addressed, was housing matters and the associated evidence base.

Furthermore, we were also not engaged by South and Vale on relevant strategic matters or key issues arising from new material which has been prepared since your Regulation 18 consultation (and which accordingly are all still matters relating to the “preparation” of the plan). For example, the strategic matter of Lowland Fens has only been raised with us at the initial scoping stage. Therefore, the Regulation 19 consultation was the first and only opportunity we had to comment on this strategic matter when evidence had been produced. We were informed that the study was to be undertaken and also told that we would be contacted if cross-boundary issues arose. We were not in fact contacted. The next we saw of the study (which looks across the city’s boundary), was when it was published at Regulation 19. We therefore commented with our concerns about this study at the first available opportunity. Clearly, the outputs should have been discussed with us before it was published, and indeed our own knowledge of these matters within the city could have been of benefit to your work.

We have not been party to the preparation of evidence base documents in support of the JLP2041. Therefore, we cannot be aware of what matters are being addressed or what issues are arising until we have the opportunity to assess them ourselves, especially when matters have not been brought to our attention. Indeed, I agree that there has been ample opportunity for raising these at OPPO and other meetings by South and Vale. However, this has not happened. The engagement of the City Council by South and Vale on the strategic matters within the scope of the duty to cooperate has not occurred. It seems the cross-boundary implications were not followed through by South and Vale after identifying them as such in their Scoping Note 2022.

With regards to the suggestion that we have been engaged on Statements of Common Ground; we have not yet received a draft bi-lateral statement of common ground, despite proactively prompting your policy team to prepare one. We envisage this will include an explanation of our respective positions on a wide range of matters relevant to the South and Vale Joint Local Plan 2041. A starting point for identifying what to include could be your DTC Scoping Note, which you shared with us in 2022. In addition, I have been made aware that a draft County-wide statement of common ground was shared with us which we have replied to. Unfortunately, it made many assertions of agreement on matters that we had not actually been engaged on at all, let alone matters which were subject to post-engagement agreement.

Lastly, I note your policy team were in touch with us on 21 November regarding a first (and, in passing, it is notable that it was indeed going to have been the first) formal Duty to Cooperate meeting, which was held on 28 November. To our surprise, during this meeting your officers advised that Duty to Cooperate would not in fact be covered and instead advised us that this was a discussion on soundness issues only. We were advised Duty to Cooperate is dealt with by your letter. Accordingly, there have been no formal DTC meetings at all.

It seems evident to us that your suggested timetable of resolving any issues in the next 3 weeks is wholly unrealistic given the significance of the cross boundary strategic matters being considered. Indeed, we were advised in the officer meeting highlighted above (and in subsequent correspondence from your policy manager) that your submission deadline is the 9 December 2024. I also note that within the last week we have been asked to respond to the scoping of a Water Cycle Study (not published at Regulation 19 stage) within 3 working days, which we will seek to do, but we do note that this is very late in the day and is indicative of wider failures in the context of s.33A.



To sign up to receive news from Oxford City Council straight to your inbox scan the QR code

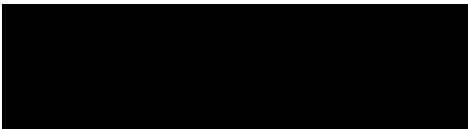
We will certainly do our absolute best to assist proactively, but this is a very weighty ask of my officers at a very late stage of your plan preparation process. Despite best endeavours by the City Council, I trust that you understand my concerns over how effective the engagement starting at this late stage, over such a short time period, on matters of such significance for our districts, can be.

Oxford Local Plan

With regards to the OLP2040, in January officers will take a report to a meeting of our full Council for a decision on how to proceed, which will be accompanied by a draft Local Development Scheme (including associated timetable). We have spent the last several months proactively working through next steps, taking legal advice, reviewing options and assessing risks, as I am sure you would expect. We have also taken the opportunity to set out our genuine and significant concerns with the Inspector's conclusions and recommendations. This was done not with any expectation that the decision would be overturned, but instead with the aim of seeking some additional clarity. I'm sure you will have noted that the most recent response to us from the Planning Inspectorate did not address or engage with any of these concerns or indeed add any further clarity.

In due course, we will be in touch on ongoing Duty to Cooperate matters arising from any next steps we take in respect of a Local Plan for Oxford. Until the papers are published as part of our democratic process it would be improper to confirm the details of the approach to be recommended outside of that process.

Yours sincerely



Caroline Green
Chief Executive



To sign up to receive news from Oxford City Council straight to your inbox scan the QR code

Alternative formats of this publication, a summary of its contents or specific sections, are available on request.

These include large print, Braille, audio, email, easy read and alternative languages.

Please contact customer services to discuss your requirements on 01235 422422.

Planning Policy Team

Abbey House, Abbey Close

Abingdon, OX14 3JE

Tel: 01235 422422

Email: planning.policy@southandvale.gov.uk

www.southoxon.gov.uk

www.whitehorsedc.gov.uk



INVESTOR IN PEOPLE