

# SOUTH OXFORDSHIRE DISTRICT COUNCIL

## (CIVIL ENFORCEMENT OFF-STREET PARKING PLACES)(NO.1) ORDER 2024

South Oxfordshire District Council (“the Council”) in exercise of its powers under Sections 32, 33(4) and 35 of the Road Traffic Regulation Act 1984 (“the Act”) and Part IV of Schedule 9 of the Act, the Traffic Management Act 2004 and of all other enabling powers; with the consent of Oxfordshire County Council in accordance with Section 39(3) of the Act and after consultation with the Chief Officer of Police in accordance with Part iii of Schedule 9 of the Act, hereby makes the following Order:-

### PART I

#### GENERAL

##### **1. Commencement**

This order shall come into operation on the 2 September 2024 and shall be cited as The South Oxfordshire District Council (Civil Enforcement Off-Street Parking Places)(No.1) Order 2024.

##### **2. Interpretation**

- (1) Any reference in this Order to a numbered Article is a reference to the Article bearing that number in this Order and any reference in this Order to a Schedule is a reference to the Schedule of Charges to this Order.
- (2) In this Order –
  - “Civil Enforcement Officer” shall mean a person duly authorised by the Council to carry out the duties hereinafter specified;
  - “charge” means a charge payable as set out in Article 4 below;
  - “charging period” means any period specified in columns 5 and 7 of the Schedule in respect of which a charge is specified in Article 4;
  - “disabled person’s badge” has the same meaning as in The Disabled Persons (Badges for Motor Vehicles)(England)Regulation 2000;
  - “disabled person’s parking space” means any area of a parking place which is provided for the leaving of a vehicle driven by or for disabled person, and indicated by markings on the surface of the parking place;
  - “disabled person’s vehicle” has the same meaning as in The Local Authorities’ Traffic Orders (Exemption for Disabled Persons)(England)Regulation 2000;
  - “driver” in relation to a vehicle waiting in a parking place, means the person driving the vehicle at the time it was left in the parking place;
  - “Renewable fuel vehicle” shall mean a motor vehicle designed to operate using fuels derived from renewable resources, including but not limited to biofuels produced from organic materials such as plants, algae, or animal waste.
  - “electric vehicle” means for the purposes of this order, a vehicle which required an external means of charging and is capable of driving at least 20 miles with zero CO2 emissions.

“Electric vehicle recharge bay” means a bay marked for the charging of vehicles which require an external means of charging;

“penalty charge” has the same meaning as in the Civil Enforcement of Parking Contraventions (England) General Regulations 2007;

“Penalty Charge Notice” has the same meaning as in the Civil Enforcement of Parking Contraventions (England) General Regulations 2007;

“invalid parking ticket” shall have the meaning assigned to it in Article 5(4) below;

“market trader permit” shall have the meaning assigned to it in Article 4(7) below;

“motor cycle” shall have the meaning assigned to it by Section 136(4) of the Act;

“motor cycle parking space” means any area of a parking place which is provided for the parking of a motor cycle and indicated by markings on the surface of the parking place;

“motor vehicle” shall have the meaning assigned to it by Section 136(1) of the Act;

“owner” in relation to a vehicle means the person by whom such a vehicle is kept and used and who is recorded as the registered keeper by the Driver and Vehicle Licensing Agency;

“parking space” means any area of a parking place which is provided for the leaving of a vehicle and indicated by markings on the surface of the parking place;

“parking permit” shall have the meaning given to it in Article 4(6) below;

“parking place” means any area of land specified by name in column 1 of the Schedule provided by the Council under Section 32(1) of the Act for use as a parking place;

“permitted period” shall have the meaning set out in column 5 of the Schedule;

“swimmer” permit” shall have the meaning assigned to it in Article 21(4) of this Order;

“Schedule” shall mean the Schedule attached to this Order;

“trailer” shall have the meaning assigned to it by Section 136(1) of the Act;

“valid parking ticket” shall mean a ticket or parking permit issued for the period during which the vehicle is parked in that parking place;

“vehicle” shall mean a motor vehicle, renewable fuel vehicle, disabled person’s vehicle, motor cycle or trailer as defined in this Article.

## **PART II**

### **USE OF LAND AND PARKING PLACES**

#### **3. Use of land and parking places**

- (1) Each area of land specified by name in column 1 of the Schedule and shown on the attached plans may be used, subject to the following provisions of this Order, as a parking place for such classes of vehicles, for such purposes, in such positions, on such days, and during such hours as are specified in relation to that area in the Schedule to this Order.
- (2) Where in the Schedule a parking place is described as available for vehicles of a specified class or in a specified position or for a specified purpose, the driver of a vehicle shall not permit it to wait in that parking place or parking space unless it is of the class of vehicle and in the position so specified or for the purpose so specified.
- (3) Insofar as a vehicle is left in a parking place during the charging period, the driver of it shall immediately pay such charge or charges as are specified in the provisions of this Order.

- (4) Insofar as a vehicle is left in a parking place during the charging period, the driver of it shall immediately display a valid parking ticket or obtain a digital ticket during a charging period even if a charge has not become payable in accordance with 7a and 7b of the Schedule unless payment in accordance with 7a and 7b of the Schedule has been made by telephone or other electronic means where a physical ticket is not provided.
- (5) Insofar as a driver is required to display a ticket or obtain a digital ticket in a parking place for which no charge is made, the driver of it shall immediately display a valid parking ticket where the means to display a ticket are provided.
- (6) Insofar as a vehicle is parked in a parking place for which a parking permit has been provided by the Council, the driver of that vehicle shall immediately display a valid permit or obtain a digital permit for the duration that the vehicle is parked in that parking place under the terms of the parking permit;
- (7) On expiry of the maximum period that a vehicle may wait, as set out in column 5 of the Schedule, the driver shall not return the vehicle to that parking place within the no return period as set out in column 6 of the Schedule.
- (8) The Council shall make provision by the installation of charging points for renewable powered vehicles at any parking place and shall make provision to designate parking spaces for use by drivers of renewable fuel powered vehicles to charge such a vehicle at a charging point.
- (9) The Council may suspend parking or may suspend the operation of part or all of this Order in respect of any parking space, parking place or part of any parking place thereof. No person shall park in any parking space, parking place or part of any parking place thereof where parking has been suspended unless the written permission of the Council has been granted.
- (10) Nothing in this Order shall prevent the Council from authorising the use of a parking space, or a parking place or part thereof for any other purpose where parking has been suspended in accordance with Article 3(9).
- (11) By exception, the Council may allow parking paid for in advance for longer than the maximum stay duration.

#### **4. Payment of Parking Charges**

- (1) This Article applies to the parking places specified by name in the Schedule.
- (2) The charge for a vehicle left in a parking place during the charging period shall be as set out in columns 7a and 7b of the Schedule.
- (3) The charge referred to in paragraph (2) of this Article shall be paid and a ticket obtained by the insertions into the apparatus or device provided of either:
  - (a) a coin or coins or notes, of appropriate denomination, to the amount of the charge;  
or
  - (b) (if the machine is so constructed or adapted) by contactless payment or any other means or electronic or digital payment;  
or
  - (c) information required by the apparatus or device at the parking place to make payment for the charge by electronic or digital means;The apparatus or device being in accordance with the provisions of Section 35(3) of the Act. It may be required to enter prescribed information required by the apparatus or device at the parking place before a ticket can be issued, or before confirmation of your parking can be provided.
- (4) Any valid parking ticket issued on payment of the charge referred to in paragraph (2) of this Article, or otherwise required to be displayed by Article 3(4) above, shall

- be properly displayed on the inside of the front windscreen of the vehicle in respect of which it was issued so as to be readable from the outside of the vehicle.
- (5) If at any time a vehicle is left in a parking place and no valid parking ticket is exhibited in accordance with Article 4(4) above, or otherwise required to be displayed by Article 3(4) above, it shall be presumed that no charge has been paid, unless it can be verified by the car park inspector that payment has been made by telephone or other electronic means.
  - (6) Where indicated in column 7b of the Schedule, the owner of the vehicle, or their representative may, on application to the Council, purchase a parking permit in respect of that vehicle for a charge ascertained by reference to the charge specified in paragraph (2) of the Article, and that parking permit shall be valid in such parking places as are specified thereon during the period for which it is issued.
  - (7) Where indicated in column 7b of the Schedule, a market trader, or their representative, may on application to the Council purchase a parking permit for one particular day of the week in respect of their vehicle for a charge ascertained by reference to the charge specified in paragraph (2) of this Article and that parking permit shall be valid in such parking places as are specified thereon during the period for which it is issued.
  - (8) No vehicle shall be left in a parking place without a valid parking permit being displayed in accordance with paragraphs 4(6) of 4(7) above or without a ticket being issued in accordance with paragraph 3(4) above being displayed in accordance with paragraph 4(4). The driver of the vehicle remains responsible for the display of the parking ticket at all times. The driver of the vehicle left in a parking place without so displaying a valid parking ticket or valid permit shall have contravened this Order whether or not a valid parking ticket has been purchased or whether or not a payment has been made, unless it can be verified by the car park inspector that payment has been made by telephone or other electronic means.
  - (9) The Council may from time to time make provision of any charge by any means it may determine and may make provision by the installation at any parking place of apparatus or device adapted for that purpose. The Council may also make provisions for the payment of any charge by means of a prepaid card and may make arrangements for the issue of prepaid cards:
    - (a) in such denominations; and
    - (b) from such place or places;as it shall determine.
  - (10) The Council may from time to time make provision for the driver of a vehicle to obtain a ticket to use a parking place that is not subject to any charge as set out in column 1 of the Schedule and may (a) make that provision by the installation of any apparatus or device it may determine adapted for the purpose of issuing a ticket, and (b) require the driver to display a ticket in accordance with Article 3(5).
  - (11) Any valid parking ticket issued on payment of the charge referred to in paragraph (2) of this Article shall not be photocopied or duplicated.
  - (12) The applicant for parking permit issued in accordance with paragraphs 4(6) or 4(7) of this Article may apply to the Council for a replacement parking permit for a charge as set out in the Schedule to this Order.

## **5. Penalty Charge**

- (1) A penalty charge will be payable by the driver or the owner of the vehicle for not complying with the provisions of this car park Order for the use of the car park.

These provisions are called parking contraventions and are set out in column 8 of the Schedule to this Order.

- (2) All enforcement of parking contraventions will be carried out by Civil Enforcement Officers.
- (3) Enforcement of penalty charges shall be carried out in accordance with the provisions of the Civil Enforcement of Parking Contraventions (England) General Regulations 2007. The Parking Penalty Enforcement Process is attached to this Order.
- (4) Any appeals and representations following the issue of a Penalty Charge Notice shall be conducted in accordance with the Civil Enforcement (England) Representations and Appeals Regulations 2007. The Parking Penalty Enforcement Process is attached to this Order.
- (5) In the event of a conflict between this car park Order and the Regulations referred to in 5(3) and 5(4), the Regulations will take precedence.

#### **6. Alteration of the position and removal of a Penalty Charge Notice**

It shall be an offence under Regulation 11 of the Civil Enforcement of Parking Contraventions (England) General Regulations 2007 for any unauthorised removal or interference with a Penalty Charge Notice, once it has been affixed to a vehicle, liable on summary conviction to a fine not exceeding level 2 on the standard scale.

#### **7. Vehicle driven away prior to a Penalty Charge Notice being served**

If the Civil Enforcement Officer's pocket notebook and computer notes confirm that the vehicle drove away after the issue of the Penalty Charge Notice had begun, i.e. whilst details were being noted, but before the Penalty Charge Notice could be served, i.e. handed to the driver or affixed to a vehicle, the Penalty Charge Notice will be served on the owner of the vehicle by post or by electronic means after obtaining the owner details from the Driver and Vehicle Licensing Agency.

#### **8. Penalty Charge Rate**

The penalty charge Notice rates and a list of contraventions are specified in the Schedule.

#### **9. Removal of vehicles**

- (1) If a vehicle is left in a parking place in a position other than in accordance with the provisions of Article 3, a person authorised by the Council in that behalf may alter or cause to be altered the position of the vehicle so that its position is in accordance with the said provisions.
- (2) If a vehicle is left in a parking place in contravention of any of the foregoing provisions of this Order, a person authorised by the Council in that behalf may remove the vehicle from that parking place or arrange for such removal.
- (3) For the purpose of meeting the requirements of an emergency, a person authorised in that behalf by the Council or a police officer in uniform may alter or cause to be altered the position of a vehicle in a parking place or remove or arrange for the removal of a vehicle from a parking place.
- (4) A vehicle can be classed as a persistent evader if there are three or more recorded contraventions for the vehicle and the penalties for these have not been paid, represented against, or appealed against within the statutory time limits, or their representations or appeals have been rejected but they have still not been paid. This may be because the vehicle is not properly registered, and the owner is confident that they can avoid paying any penalty charges. When parked in contravention of this order, a persistent evader's vehicle will be subject to the

strongest possible enforcement action following the issue of a Penalty Charge Notice and confirmation of persistent evader status. This is likely to involve immobilisation or removal of the vehicle which will not be released until proof of ownership and registered address has been provided.

- (5) Any person removing or arranging for the removal of a vehicle by virtue of paragraphs (2), (3) or (4) of this Article shall make such arrangements as he considers to be reasonably necessary for the safety of the vehicle in the place to which it is removed.

#### **10. Liability for Loss**

The Council shall not be liable for any loss or damage to a vehicle or its contents while in a parking place.

#### **11. Vehicles to be parked with engines stopped**

The driver of a vehicle using a parking place shall stop the engine as soon as the vehicle is in position in the parking place and shall not start the engine except when about to change the position of the vehicle in, or to depart from, the parking place.

#### **12. Sounding the horn**

The driver of a vehicle using a parking place shall not sound any horn or other similar instrument except, if necessary when about to change the position of the vehicle in, or about to depart from, the parking place.

#### **13. Restrictions on driving of vehicles in parking places**

Where in a parking place signs are erected, or surface markings are laid for the purpose of:

- (a) Indicating the entrance to or exit from the parking place; or
- (b) Indicating that a vehicle using the parking place shall proceed in a specified direction with the parking place;

no person shall drive or permit to be driven any vehicle (i) so that it enters the parking place otherwise than by an entrance or leaves the parking place otherwise than by an exit, so indicated, or (ii) in a direction other than so specified.

#### **14. No driving around**

No person shall, except with the permission of a person authorised by the Council in that behalf, drive or permit to be driven any vehicle in a parking place for any purpose other than the purpose of leaving that vehicle in the parking place in accordance with the provisions of this Order or for the purpose of departing from the parking place.

#### **15. Speed Limit**

The driver of a vehicle shall not drive the vehicle in excess of 10mph in a parking place.

#### **16. Waiting Period**

The driver of a vehicle shall not permit it to wait in a parking place for longer than the maximum period for waiting, specified in column 5 of the Schedule to this Order in relation to that parking place.

#### **17. Return Period**

Where a vehicle has been removed from a parking space within a parking place, no driver is permitted to park it in that parking place within the no return period as specified in column 6 of the Schedule to this Order.

### **18. Use of disabled parking spaces**

No person shall leave any vehicle in a disabled person's parking space whether with or without a valid parking ticket unless the vehicle is displaying in the relevant position a disabled person's badge in accordance with Article 22(2) below.

### **19. Use of motor cycle parking spaces**

No person shall leave a vehicle, which is not a motor cycle, in a motor cycle parking space. A person so leaving a vehicle, which is not a motor cycle in a motor cycle parking space shall be deemed to have left the vehicle not wholly in a parking space as set out in column 8 of this Schedule.

### **20. Use of renewable fuel vehicle recharge bay**

No person shall leave a vehicle in an renewable fuel vehicle recharge bay unless the vehicle is being recharged by the apparatus provided for that purpose.

### **21. Activities prohibited in parking places**

Unless with the prior written consent of the Council, no person shall use any part of a parking place or any vehicle left in a parking place;

- (a) In connection with the sale of any article to persons in or near the parking place; or
- (b) In connection with the selling or offering for hire of skills or services; or
- (c) For sleeping, camping or cooking (except where specifically authorised in the Schedule); or
- (d) For the purpose of servicing or washing any vehicle or part thereof other than is reasonably necessary to enable that vehicle to depart from the parking place; or
- (e) To erect or cause to be erected any tent, booth, stand or building or other structure; or
- (f) To light or cause to be lit any fire.

## **PART III**

### **EXEMPTIONS AND REDUCED CHARGES**

#### **22. Exemptions**

- (1) A motor cycle left in a parking place shall comply with the time limits as set out in columns 5 and 6 of the Schedule.
- (2) The driver of a vehicle who displays in the relevant position a valid disabled person's badge will pay the charge as specified in any Articles to this Order and shall comply with the time limits as set out in columns 5 and 6 of the Schedule. For the purpose of this Order a vehicle shall be regarded as displaying a valid disabled person's badge in the relevant position when (i) in the case of a vehicle fitted with a front windscreen, the badge is exhibited thereon with the observe side facing forwards on the near side and immediately behind the windscreen; and (ii) in the case of a vehicle not fitted with a front windscreen, the badge is exhibited in a conspicuous position on the front nearside of the vehicle or the badge is obtained digitally.
- (3) In issuing permits under this Car Parking Order, priority shall be given to residents who may lose on-street parking due to the implementation of any Oxfordshire County Council on-street Order.

**23. Reduced Charges**

(1) As set out in the Schedule

**PART IV**

**REVOCATION**

- 24.** The South Oxfordshire District Council (Off-Street Parking Places) Order 2022 is hereby revoked.

THE COMMON SEAL OF  
**SOUTH OXFORDSHIRE DISTRICT COUNCIL**

was hereunto affixed this  
22<sup>nd</sup> day of August 2024  
in the presence of:

*JA Conigan.*

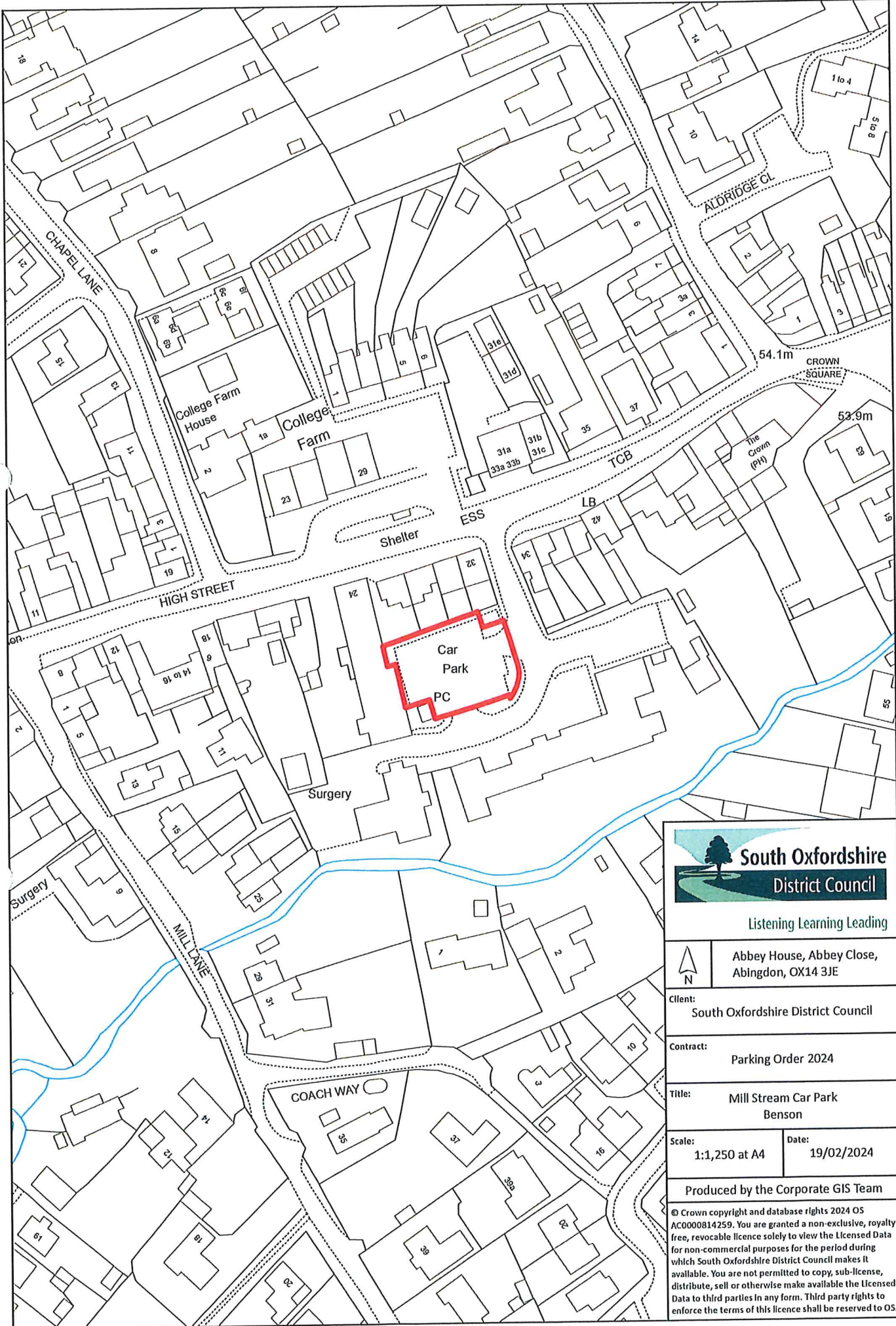
Designated Officer




87124



AE



Listening Learning Leading


 Abbey House, Abbey Close,  
 Abingdon, OX14 3JE

Client:  
 South Oxfordshire District Council

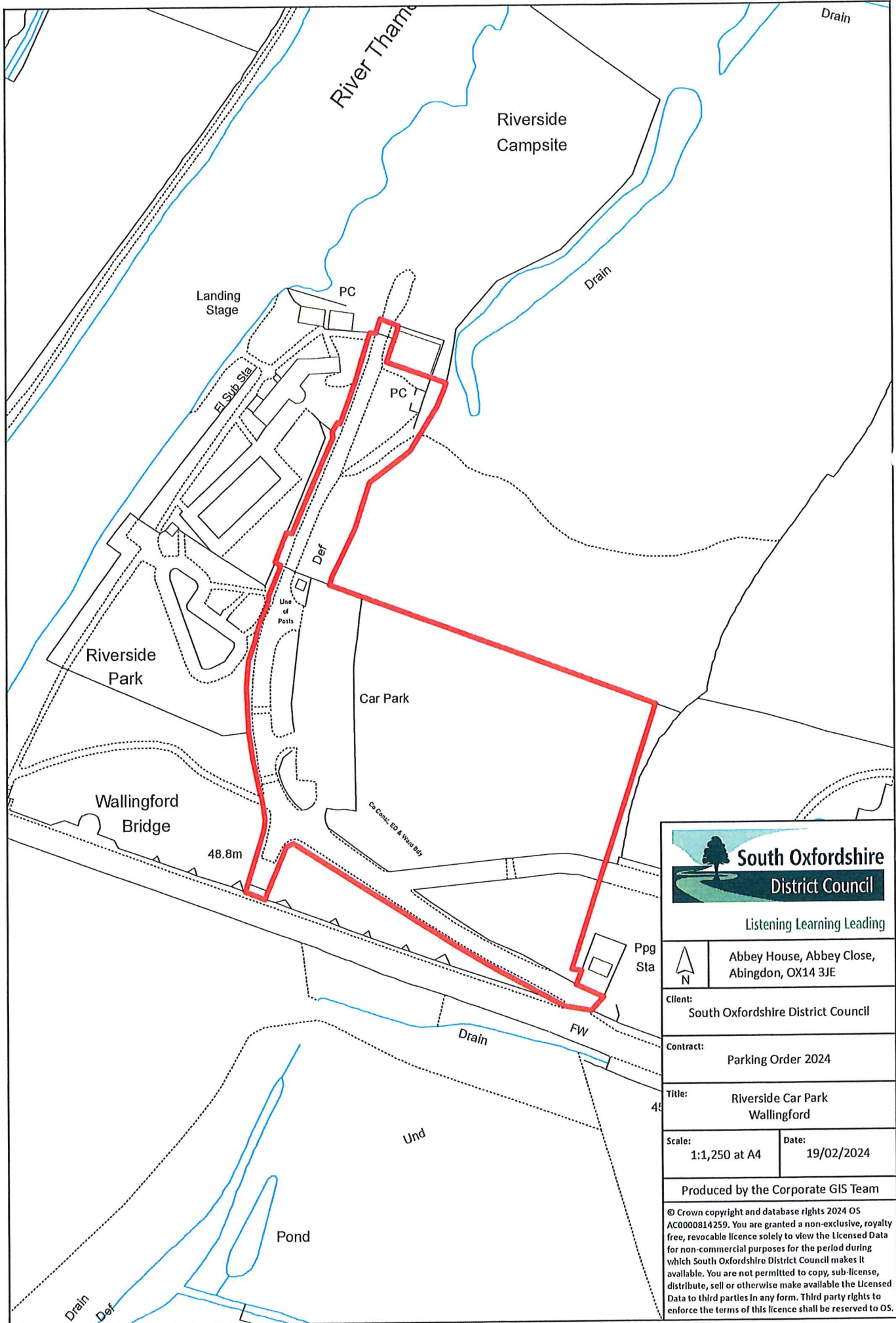
Contract:  
 Parking Order 2024

Title:  
 Mill Stream Car Park  
 Benson

Scale: 1:1,250 at A4	Date: 19/02/2024
-------------------------	---------------------

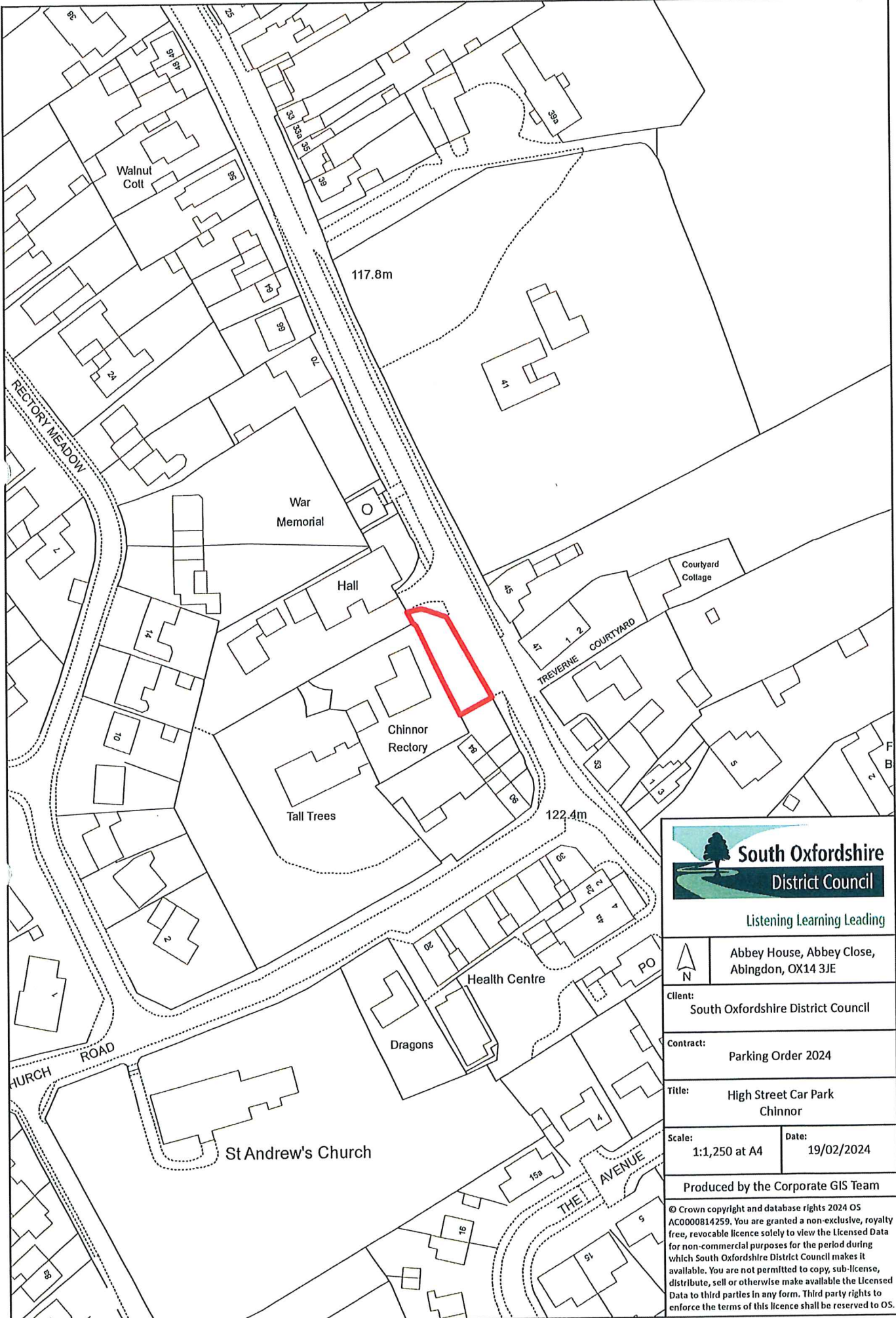
Produced by the Corporate GIS Team

© Crown copyright and database rights 2024 OS  
 AC0000814259. You are granted a non-exclusive, royalty  
 free, revocable licence solely to view the Licensed Data  
 for non-commercial purposes for the period during  
 which South Oxfordshire District Council makes it  
 available. You are not permitted to copy, sub-licence,  
 distribute, sell or otherwise make available the Licensed  
 Data to third parties in any form. Third party rights to  
 enforce the terms of this licence shall be reserved to OS.



<p><b>South Oxfordshire District Council</b> Listening Learning Leading</p>	
<p>N</p>	<p>Abbey House, Abbey Close, Abingdon, OX14 3JE</p>
<p>Client: South Oxfordshire District Council</p>	
<p>Contract: Parking Order 2024</p>	
<p>Title: Riverside Car Park Wallingford</p>	
<p>Scale: 1:1,250 at A4</p>	<p>Date: 19/02/2024</p>
<p>Produced by the Corporate GIS Team</p>	
<p><small>© Crown copyright and database rights 2024 OS AC000814259. You are granted a non-exclusive, royalty free, revocable licence solely to view the Licensed Data for non-commercial purposes for the period during which South Oxfordshire District Council makes it available. You are not permitted to copy, sub-license, distribute, sell or otherwise make available the Licensed Data to third parties in any form. Third party rights to enforce the terms of this licence shall be reserved to OS.</small></p>	

pe



Listening Learning Leading

Abbey House, Abbey Close,  
Abingdon, OX14 3JE

Client:  
South Oxfordshire District Council

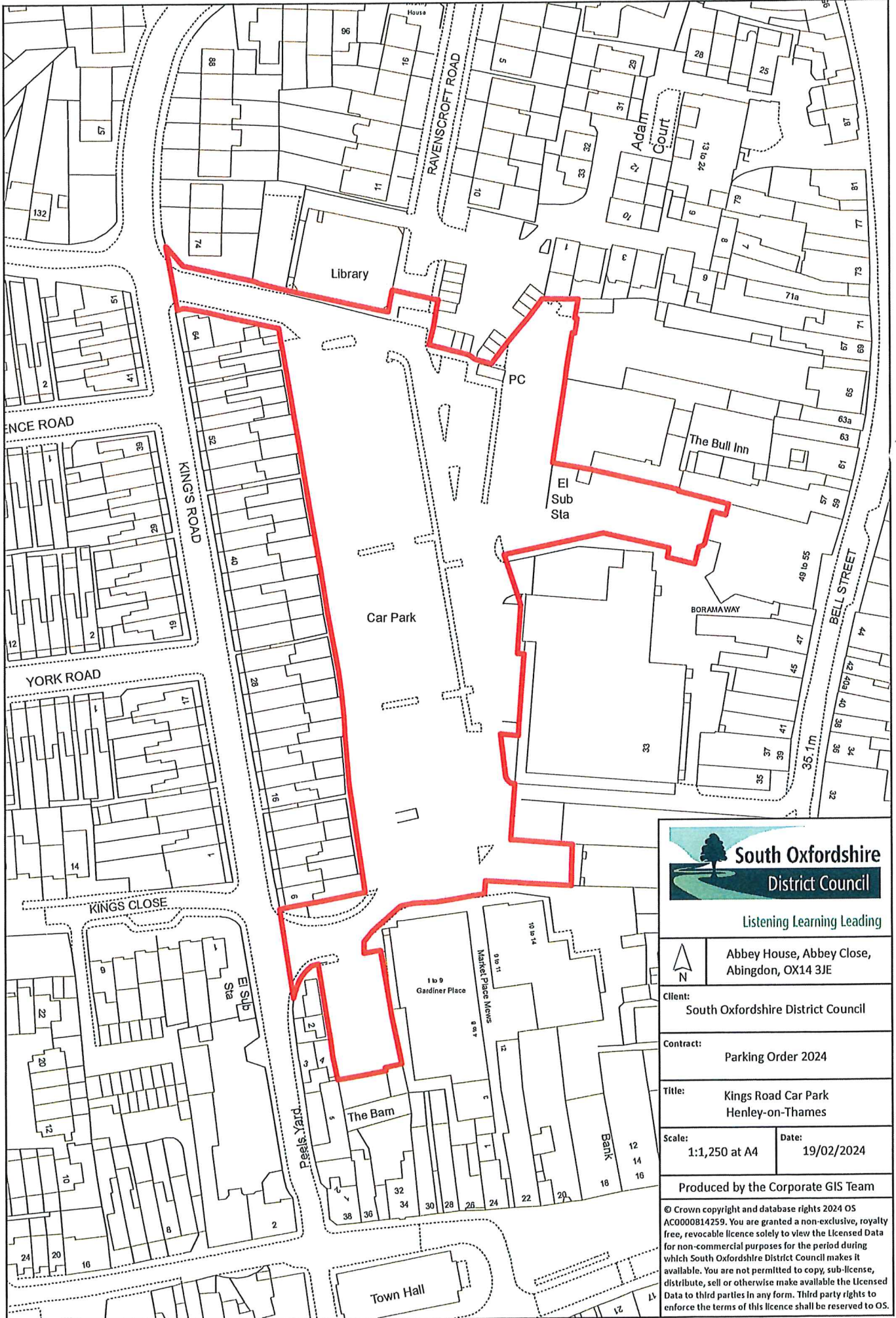
Contract:  
Parking Order 2024



Title:  
High Street Car Park  
Chinnor

Scale: 1:1,250 at A4	Date: 19/02/2024
-------------------------	---------------------

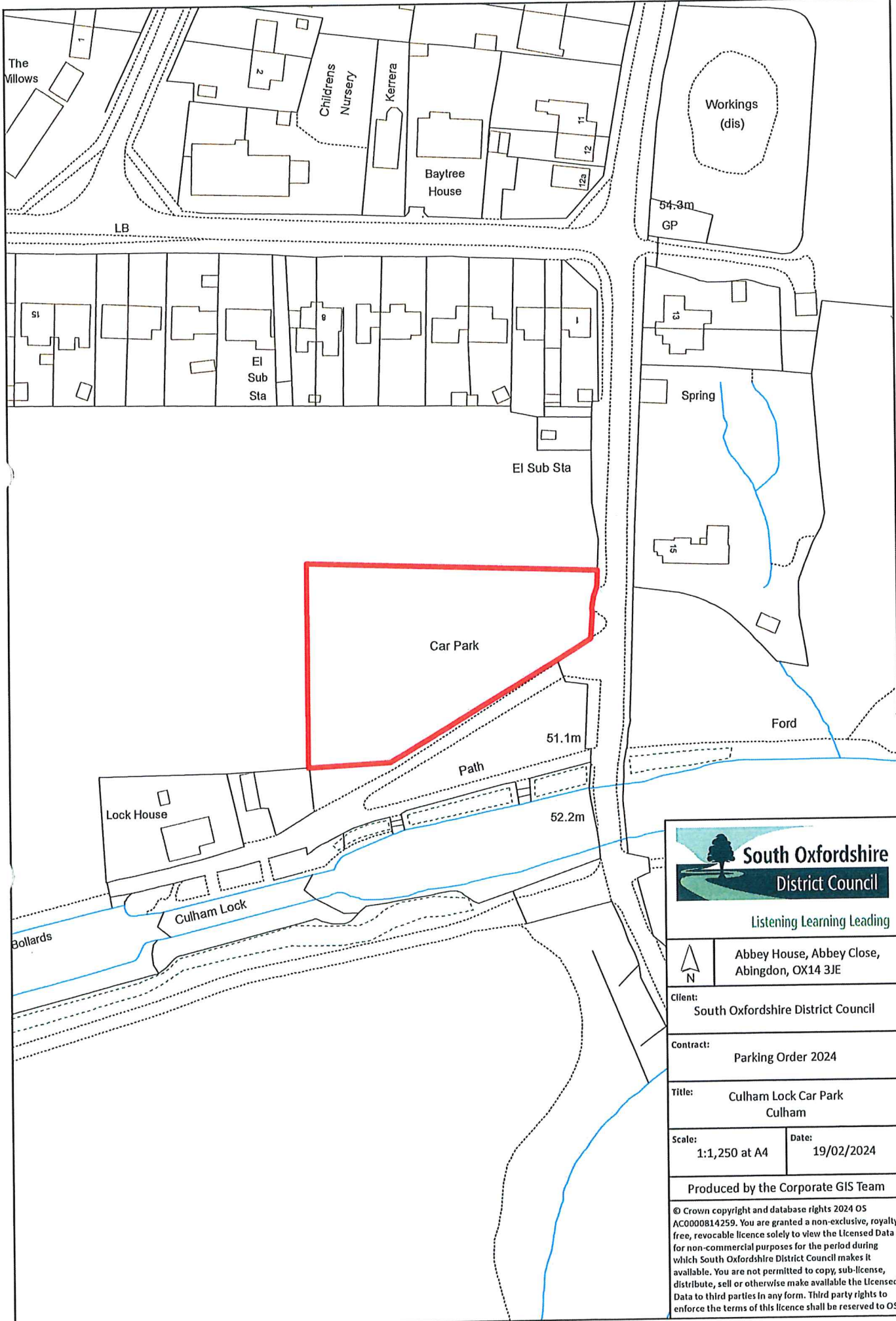
Produced by the Corporate GIS Team

© Crown copyright and database rights 2024 OS AC0000814259. You are granted a non-exclusive, royalty free, revocable licence solely to view the Licensed Data for non-commercial purposes for the period during which South Oxfordshire District Council makes it available. You are not permitted to copy, sub-license, distribute, sell or otherwise make available the Licensed Data to third parties in any form. Third party rights to enforce the terms of this licence shall be reserved to OS.



 <b>South Oxfordshire District Council</b>	
Listening Learning Leading	
	Abbey House, Abbey Close, Abingdon, OX14 3JE
Client:	South Oxfordshire District Council
Contract:	Parking Order 2024
Title:	Kings Road Car Park Henley-on-Thames
Scale:	1:1,250 at A4
Date:	19/02/2024
Produced by the Corporate GIS Team	
<small>© Crown copyright and database rights 2024 OS AC0000814259. You are granted a non-exclusive, royalty free, revocable licence solely to view the Licensed Data for non-commercial purposes for the period during which South Oxfordshire District Council makes it available. You are not permitted to copy, sub-license, distribute, sell or otherwise make available the Licensed Data to third parties in any form. Third party rights to enforce the terms of this licence shall be reserved to OS.</small>	

SAE



Listening Learning Leading

Abbey House, Abbey Close,  
Abingdon, OX14 3JE

Client:  
South Oxfordshire District Council

Contract:  
Parking Order 2024

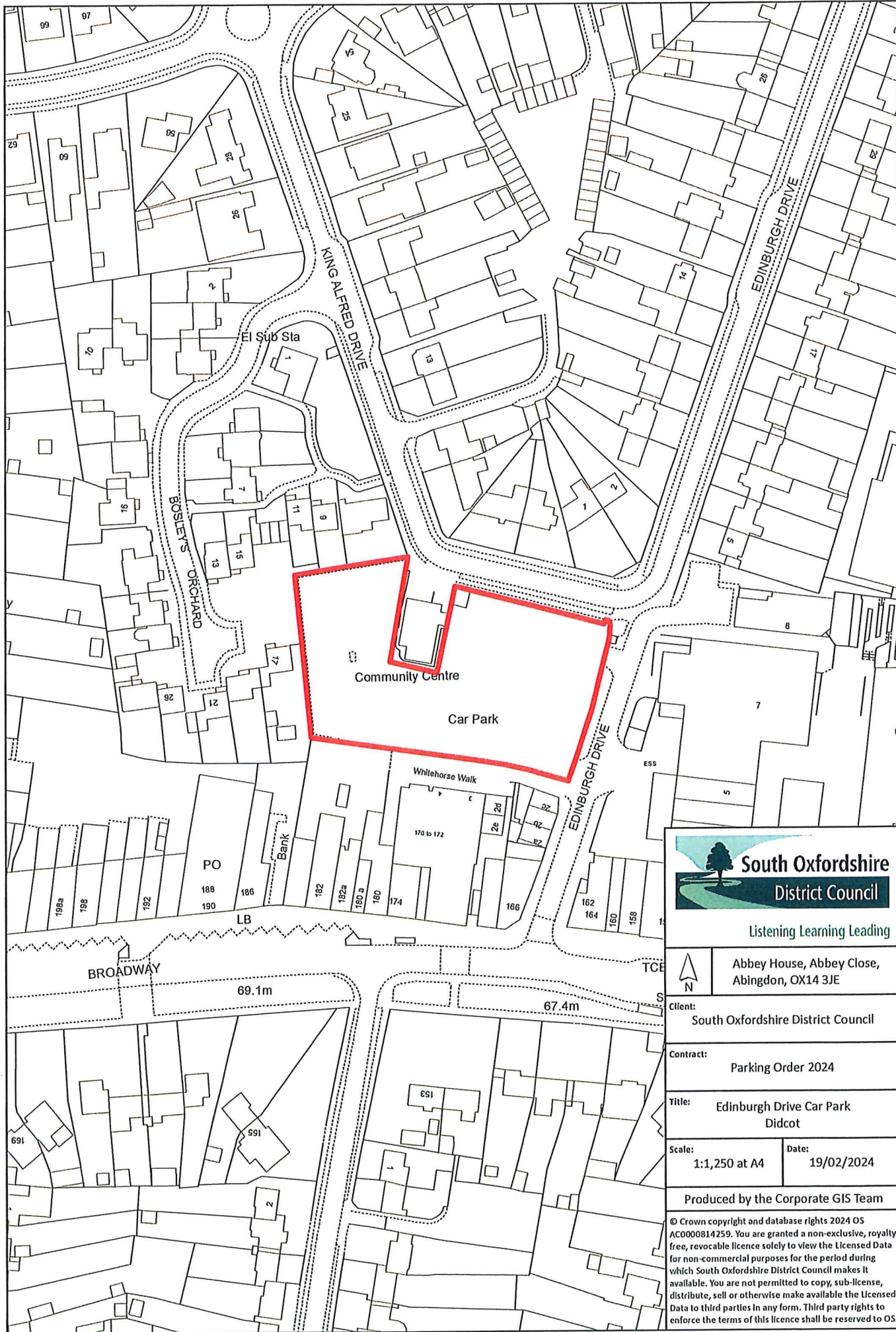
Title:  
Culham Lock Car Park  
Culham

Scale: 1:1,250 at A4	Date: 19/02/2024
-------------------------	---------------------

Produced by the Corporate GIS Team

© Crown copyright and database rights 2024 OS  
AC0000814259. You are granted a non-exclusive, royalty  
free, revocable licence solely to view the Licensed Data  
for non-commercial purposes for the period during  
which South Oxfordshire District Council makes it  
available. You are not permitted to copy, sub-license,  
distribute, sell or otherwise make available the Licensed  
Data to third parties in any form. Third party rights to  
enforce the terms of this licence shall be reserved to OS.

SE



Listening Learning Leading



Abbey House, Abbey Close,  
Abingdon, OX14 3JE

Client:  
South Oxfordshire District Council

Contract:  
Parking Order 2024

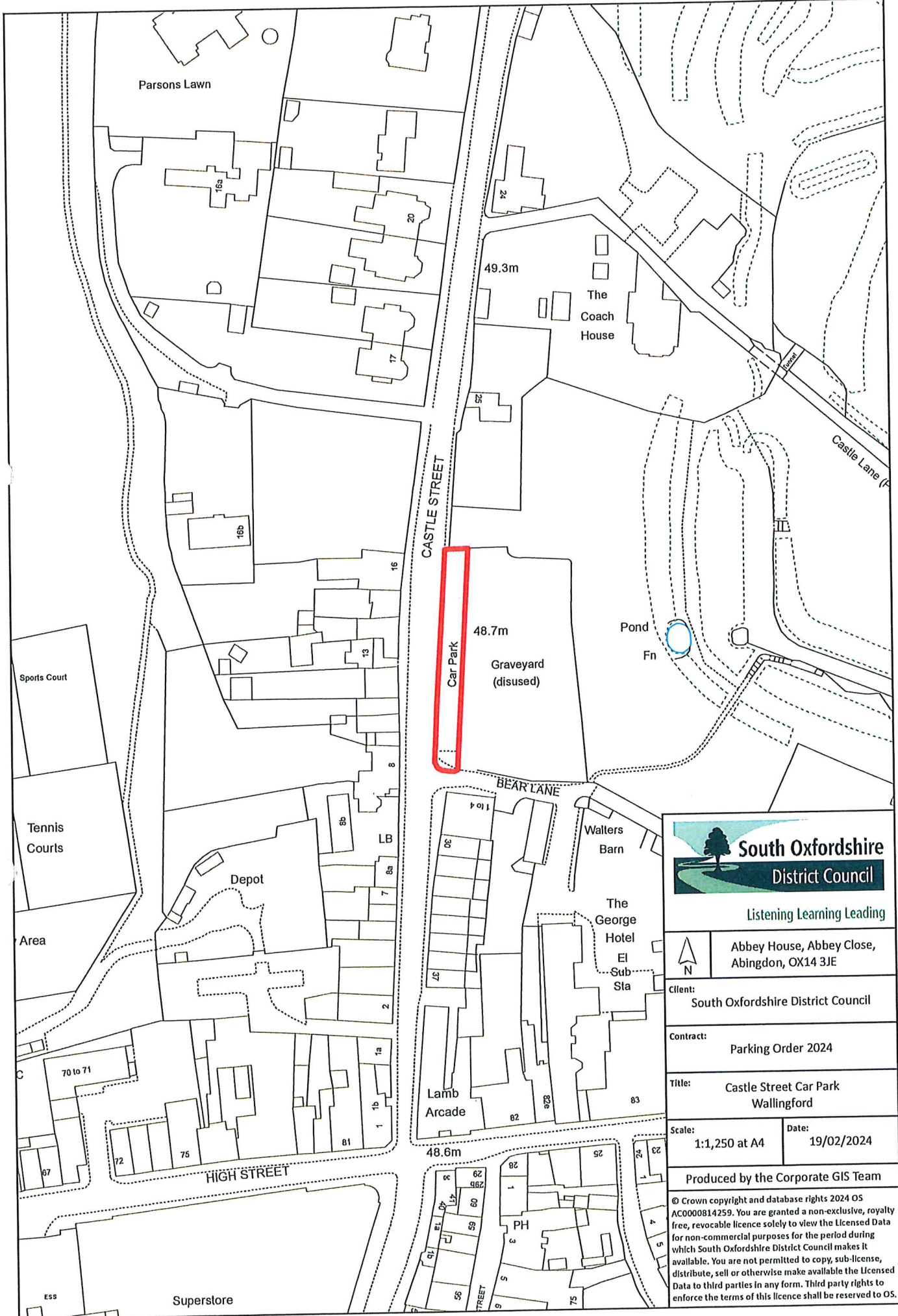
Title:  
Edinburgh Drive Car Park  
Didcot



Scale: 1:1,250 at A4      Date: 19/02/2024

Produced by the Corporate GIS Team

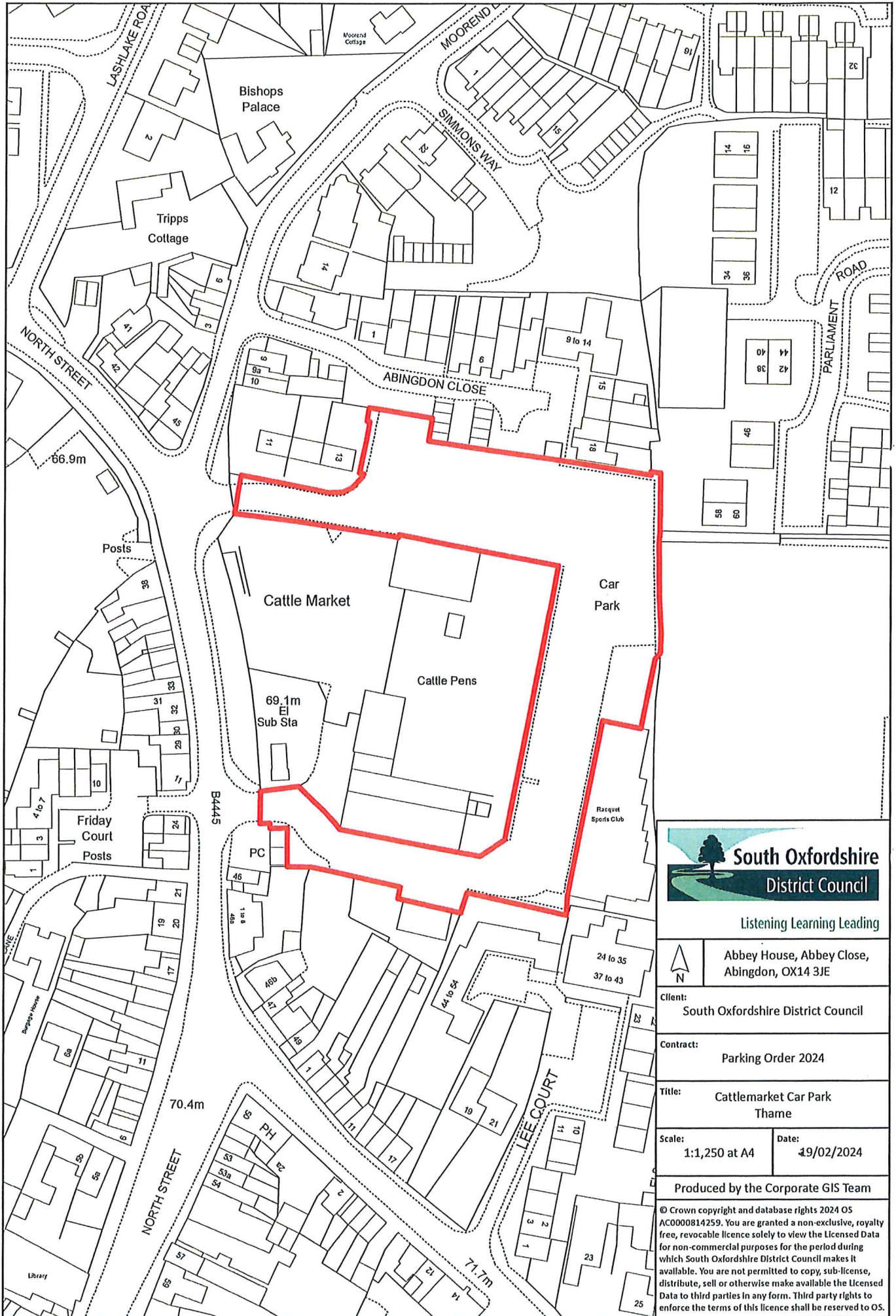
© Crown copyright and database rights 2024 OS AC0000814259. You are granted a non-exclusive, royalty free, revocable licence solely to view the Licensed Data for non-commercial purposes for the period during which South Oxfordshire District Council makes it available. You are not permitted to copy, sub-license, distribute, sell or otherwise make available the Licensed Data to third parties in any form. Third party rights to enforce the terms of this licence shall be reserved to OS.

87e



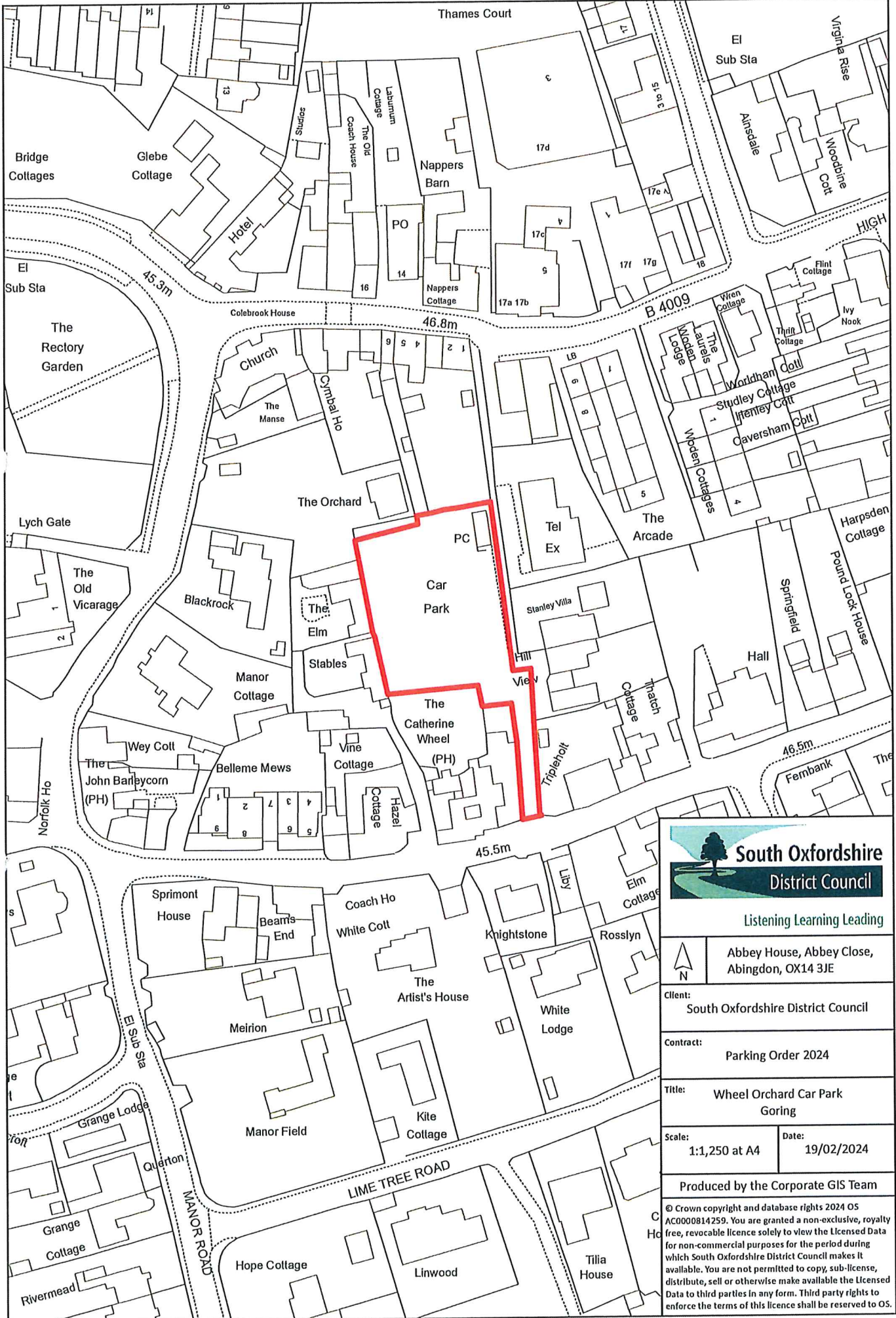
 <b>South Oxfordshire District Council</b> Listening Learning Leading	
	Abbey House, Abbey Close, Abingdon, OX14 3JE
Client:	South Oxfordshire District Council
Contract:	Parking Order 2024
Title:	Castle Street Car Park Wallingford
Scale:	1:1,250 at A4
Date:	19/02/2024
Produced by the Corporate GIS Team	
<small>© Crown copyright and database rights 2024 OS AC0000814259. You are granted a non-exclusive, royalty free, revocable licence solely to view the Licensed Data for non-commercial purposes for the period during which South Oxfordshire District Council makes it available. You are not permitted to copy, sub-license, distribute, sell or otherwise make available the Licensed Data to third parties in any form. Third party rights to enforce the terms of this licence shall be reserved to OS.</small>	

fe.





*ae*



Listening Learning Leading

Abbey House, Abbey Close,  
Abingdon, OX14 3JE

Client:  
South Oxfordshire District Council

Contract:  
Parking Order 2024

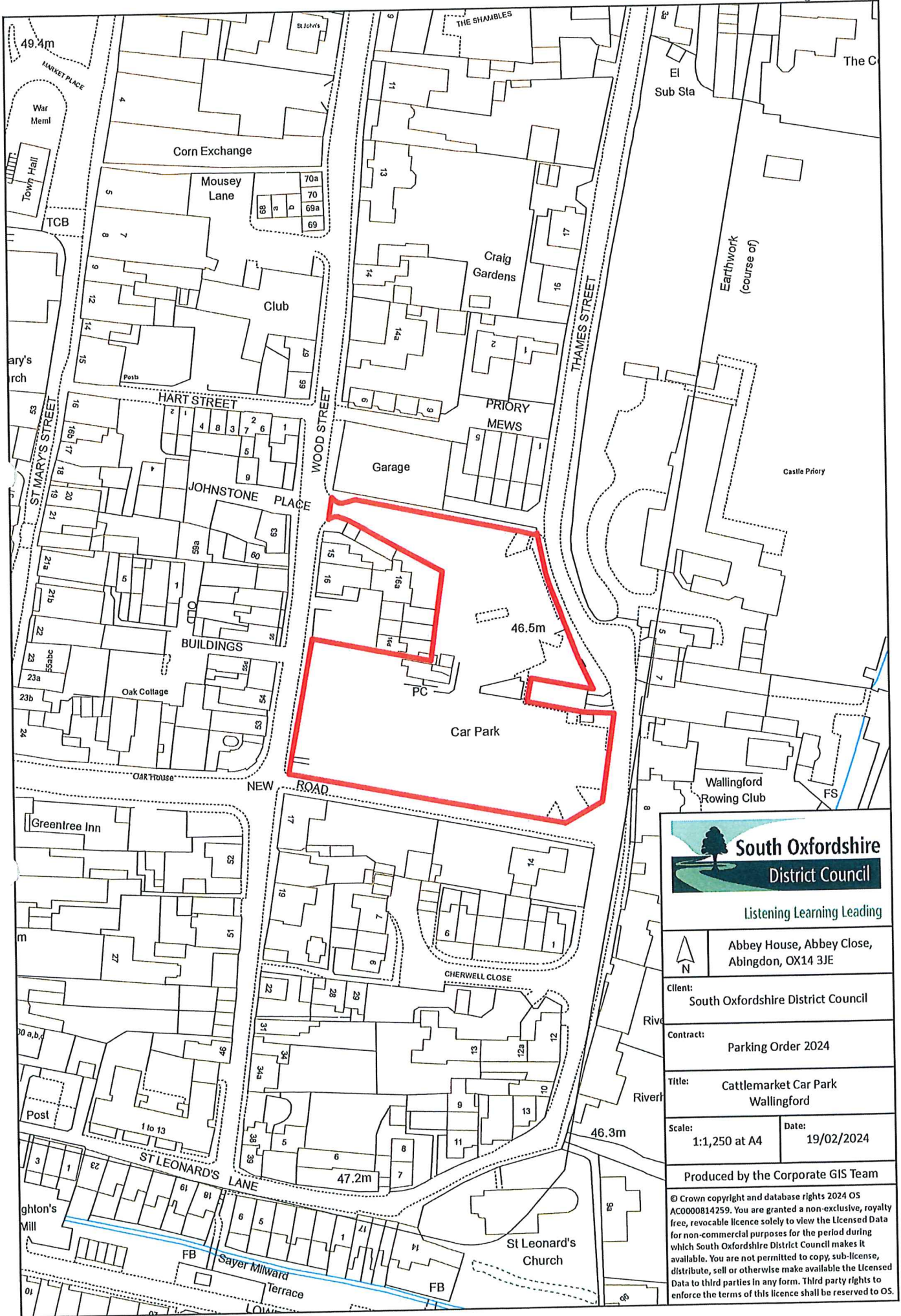
Title:  
Wheel Orchard Car Park  
Goring


Scale: 1:1,250 at A4      Date: 19/02/2024

Produced by the Corporate GIS Team

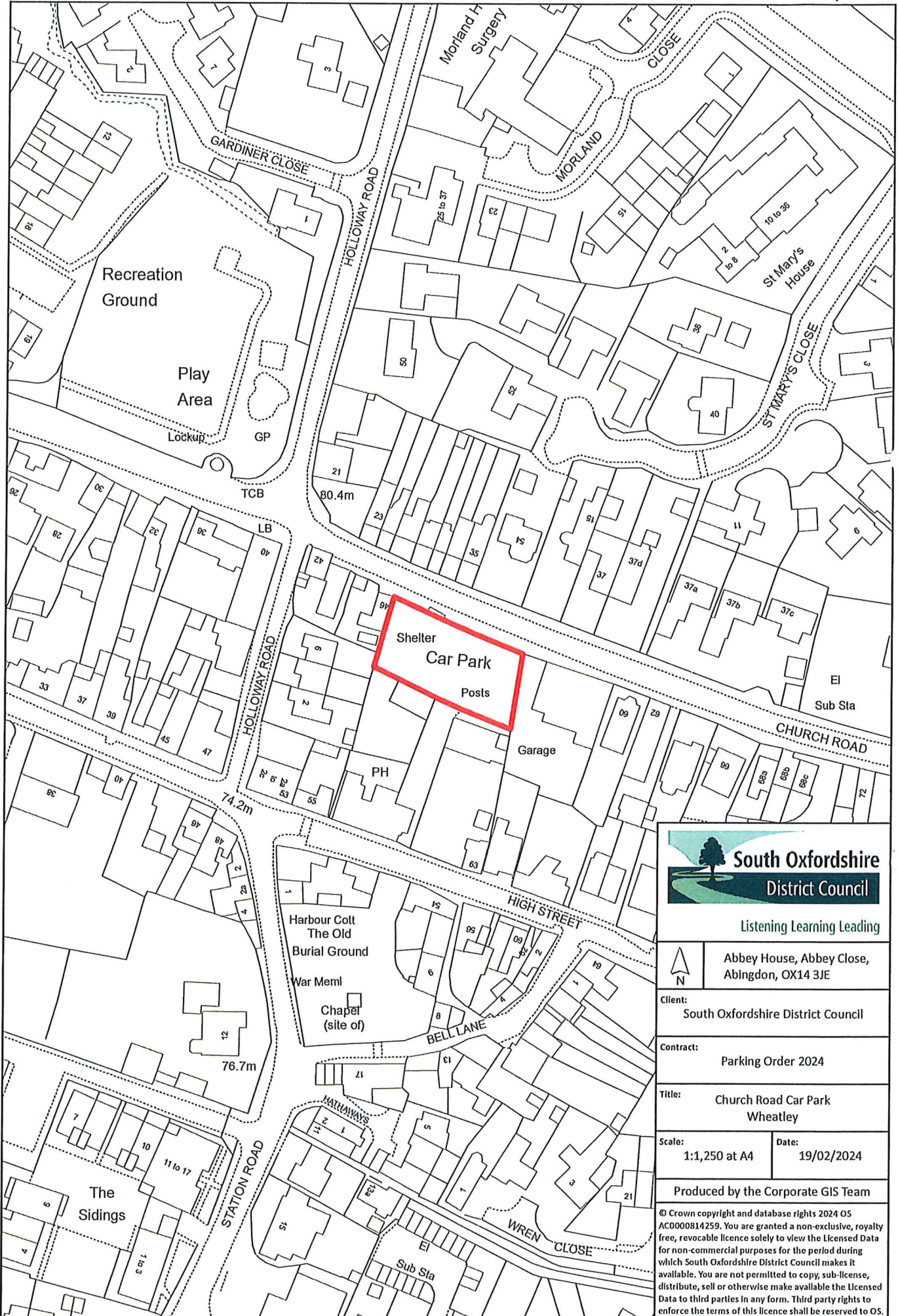
© Crown copyright and database rights 2024 OS  
AC0000814259. You are granted a non-exclusive, royalty  
free, revocable licence solely to view the Licensed Data  
for non-commercial purposes for the period during  
which South Oxfordshire District Council makes it  
available. You are not permitted to copy, sub-licence,  
distribute, sell or otherwise make available the Licensed  
Data to third parties in any form. Third party rights to  
enforce the terms of this licence shall be reserved to OS.

AE



 <p><b>South Oxfordshire District Council</b></p> <p>Listening Learning Leading</p>	
<p>Abbey House, Abbey Close, Abingdon, OX14 3JE</p>	
<p>Client: South Oxfordshire District Council</p>	
<p>Contract: Parking Order 2024</p>	
<p>Title: Cattlemarket Car Park Wallingford</p>	
<p>Scale: 1:1,250 at A4</p>	<p>Date: 19/02/2024</p>
<p>Produced by the Corporate GIS Team</p>	
<p><small>© Crown copyright and database rights 2024 OS AC0000814259. You are granted a non-exclusive, royalty free, revocable licence solely to view the Licensed Data for non-commercial purposes for the period during which South Oxfordshire District Council makes it available. You are not permitted to copy, sub-license, distribute, sell or otherwise make available the Licensed Data to third parties in any form. Third party rights to enforce the terms of this licence shall be reserved to OS.</small></p>	

AE



Listening Learning Leading



Abbey House, Abbey Close,  
Abingdon, OX14 3JE

Client:  
South Oxfordshire District Council

Contract:  
Parking Order 2024

Title:  
Church Road Car Park  
Wheatley

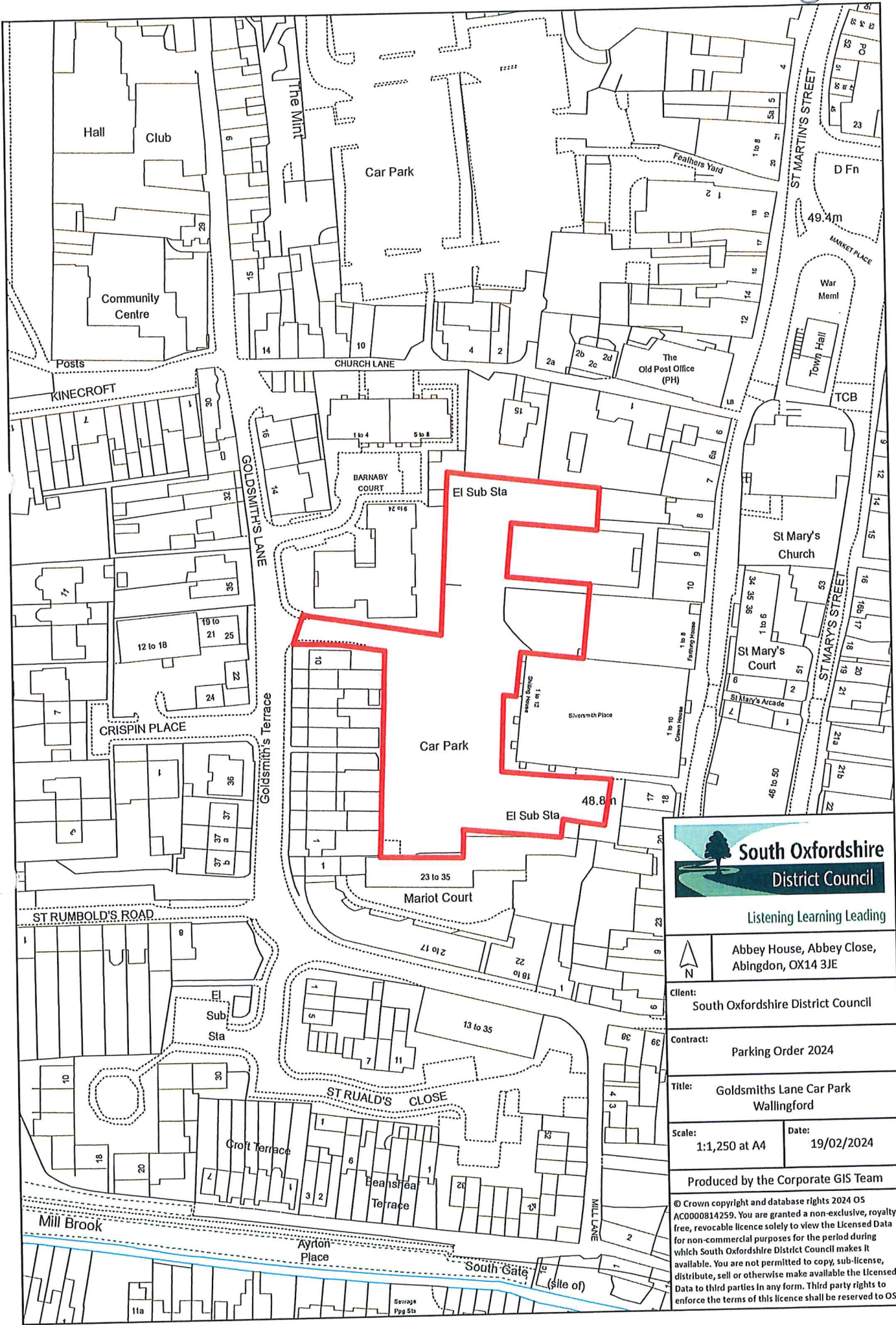
Scale:  
1:1,250 at A4

Date:  
19/02/2024

Produced by the Corporate GIS Team

© Crown copyright and database rights 2024 OS AC000814259. You are granted a non-exclusive, royalty free, revocable licence solely to view the Licensed Data for non-commercial purposes for the period during which South Oxfordshire District Council makes it available. You are not permitted to copy, sub-license, distribute, sell or otherwise make available the Licensed Data to third parties in any form. Third party rights to enforce the terms of this licence shall be reserved to OS.

SAC



Listening Learning Leading

Abbey House, Abbey Close, Abingdon, OX14 3JE

Client: South Oxfordshire District Council

Contract: Parking Order 2024

Title: Goldsmiths Lane Car Park Wallingford

Scale: 1:1,250 at A4 Date: 19/02/2024

Produced by the Corporate GIS Team

© Crown copyright and database rights 2024 OS AC0000814259. You are granted a non-exclusive, royalty free, revocable licence solely to view the Licensed Data for non-commercial purposes for the period during which South Oxfordshire District Council makes it available. You are not permitted to copy, sub-license, distribute, sell or otherwise make available the Licensed Data to third parties in any form. Third party rights to enforce the terms of this licence shall be reserved to OS.

Handwritten initials or mark in the top right corner.



Listening Learning Leading

Abbey House, Abbey Close,  
Abingdon, OX14 3JE

Client:  
South Oxfordshire District Council

Contract:  
Parking Order 2024

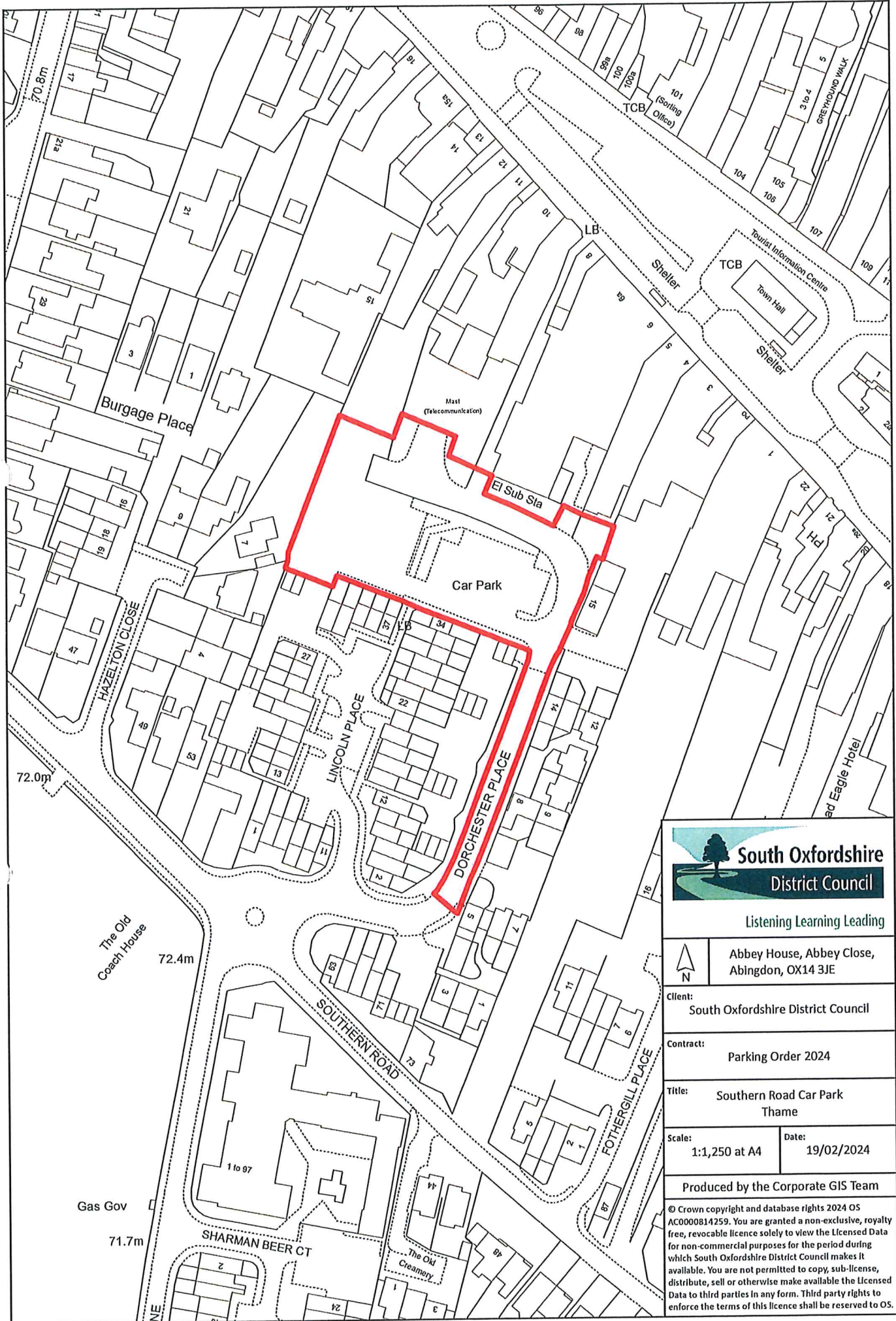
Title:  
Greys Road Car Park  
Henley-on-Thames

Scale: 1:1,250 at A4      Date: 19/02/2024

Produced by the Corporate GIS Team

© Crown copyright and database rights 2024 OS AC0000814259. You are granted a non-exclusive, royalty free, revocable licence solely to view the Licensed Data for non-commercial purposes for the period during which South Oxfordshire District Council makes it available. You are not permitted to copy, sub-licence, distribute, sell or otherwise make available the Licensed Data to third parties in any form. Third party rights to enforce the terms of this licence shall be reserved to OS.

Handwritten initials/signature in the top right corner.



Listening Learning Leading

Abbey House, Abbey Close,  
Abingdon, OX14 3JE

Client:  
South Oxfordshire District Council

Contract:  
Parking Order 2024

Title:  
Southern Road Car Park  
Thame

Scale: 1:1,250 at A4	Date: 19/02/2024
-------------------------	---------------------

Produced by the Corporate GIS Team

© Crown copyright and database rights 2024 OS AC0000814259. You are granted a non-exclusive, royalty free, revocable licence solely to view the Licensed Data for non-commercial purposes for the period during which South Oxfordshire District Council makes it available. You are not permitted to copy, sub-licence, distribute, sell or otherwise make available the Licensed Data to third parties in any form. Third party rights to enforce the terms of this licence shall be reserved to OS.

Handwritten initials/signature in the top right corner.



Listening Learning Leading



Abbey House, Abbey Close,  
Abingdon, OX14 3JE

Client:  
South Oxfordshire District Council

Contract:  
Parking Order 2024

Title:  
Southfields Car Park  
Henley-on-Thames

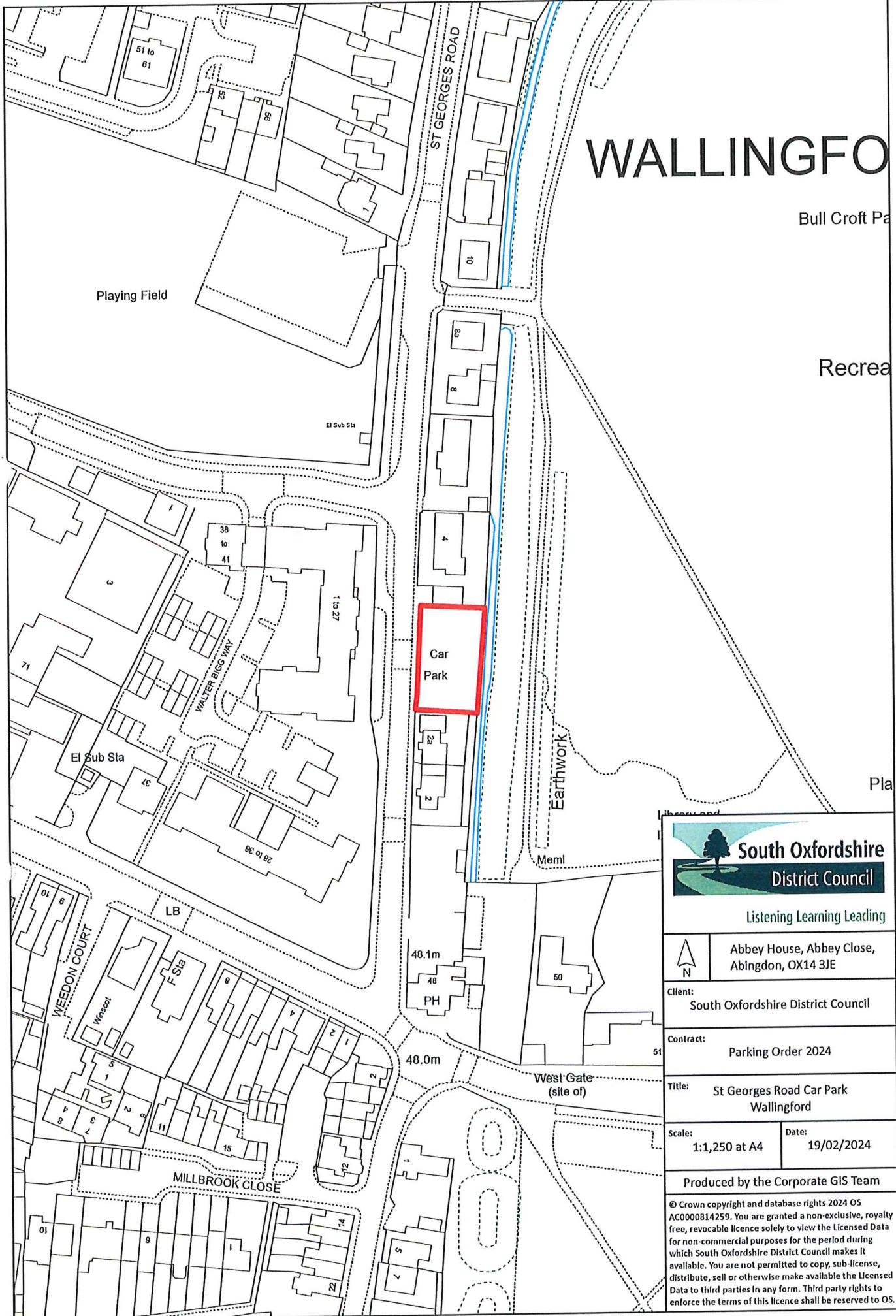
Scale:  
1:1,250 at A4

Date:  
19/02/2024

Produced by the Corporate GIS Team

© Crown copyright and database rights 2024 OS AC000814259. You are granted a non-exclusive, royalty free, revocable licence solely to view the Licensed Data for non-commercial purposes for the period during which South Oxfordshire District Council makes it available. You are not permitted to copy, sub-license, distribute, sell or otherwise make available the Licensed Data to third parties in any form. Third party rights to enforce the terms of this licence shall be reserved to OS.

gfe





# WALLINGFORD

Bull Croft Pa

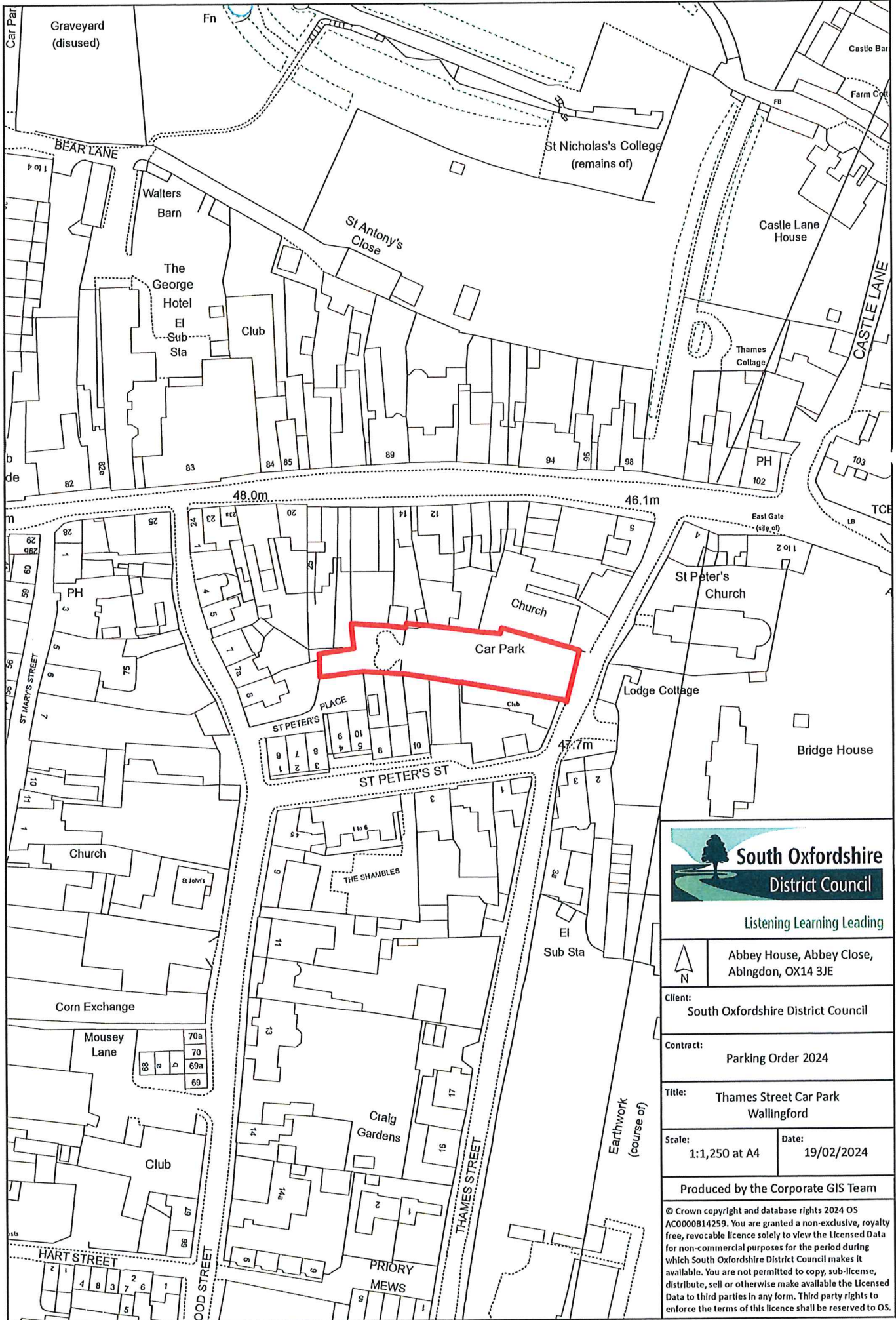
Recrea

Pla

 <p><b>South Oxfordshire District Council</b></p> <p>Listening Learning Leading</p>	
	<p>Abbey House, Abbey Close, Abingdon, OX14 3JE</p>
<p>Client: South Oxfordshire District Council</p>	
<p>Contract: Parking Order 2024</p>	
<p>Title: St Georges Road Car Park Wallingford</p>	
<p>Scale: 1:1,250 at A4</p>	<p>Date: 19/02/2024</p>
<p>Produced by the Corporate GIS Team</p>	
<p><small>© Crown copyright and database rights 2024 OS AC0000814259. You are granted a non-exclusive, royalty free, revocable licence solely to view the Licensed Data for non-commercial purposes for the period during which South Oxfordshire District Council makes it available. You are not permitted to copy, sub-licence, distribute, sell or otherwise make available the Licensed Data to third parties in any form. Third party rights to enforce the terms of this licence shall be reserved to OS.</small></p>	



Handwritten initials 'JC' in the top right corner.



Listening Learning Leading

Abbey House, Abbey Close,  
Abingdon, OX14 3JE

Client: South Oxfordshire District Council

Contract: Parking Order 2024

Title: Thames Street Car Park  
Wallingford

Scale: 1:1,250 at A4 Date: 19/02/2024

Produced by the Corporate GIS Team

© Crown copyright and database rights 2024 OS AC0000814259. You are granted a non-exclusive, royalty free, revocable licence solely to view the Licensed Data for non-commercial purposes for the period during which South Oxfordshire District Council makes it available. You are not permitted to copy, sub-license, distribute, sell or otherwise make available the Licensed Data to third parties in any form. Third party rights to enforce the terms of this licence shall be reserved to OS.

## SCHEDULE 1 - CAR PARKS SUBJECT TO PARKING CHARGES AND/OR EXCESS CHARGES

1	2	3	4	5	6	7 SCHEDULE OF CHARGES		8 PENALTY CHARGE		
NAME OF PARKING PLACE	POSITION IN WHICH VEHICLE MAY WAIT	PERMITTED CLASSES OF VEHICLE	HOURS AND DAYS OF OPERATION OF PARKING PLACE	PERMITTED PERIOD: a) CHARGING PERIOD b) NON-CHARGING PERIOD c) MAX. DURATION VEHICLES MAY WAIT IN CHARGING PERIOD d) NON-CHARGING PERIOD DURATION e) MAXIMUM STAY DURATION	NO RETURN PERIOD	7a CHARGES FOR PARKING TICKETS a) CHARGING PERIOD b) NON-CHARGING PERIODS  Footnote 1 Footnote 3 Footnote 4	7b SEASON TICKETS AND PERMITS ((EXCL. VAT) WITHIN CHARGING PERIOD  Footnote 1 Footnote 2 Footnote 4	Higher Level £70 Penalty Charge Notice issued £35 if paid within 14 days £70 Notice to Owner issued £105 Charge Certificate issued £113 Case registered at Traffic Enforcement Centre  Lower Level £50 Penalty Charge Notice issued £25 if paid within 14 days £50 Notice to Owner issued £75 Charge Certificate issued £83 Case registered at Traffic Enforcement Centre		
Millstream, Benson and	Wholly within a parking bay, disabled persons parking bay, electric vehicle recharge bay, or motorcycle bay as indicated by surface markings	All classes of vehicles not exceeding 3.5 tonnes (70cwts) laden weight	All days all hours	a) Monday to Sunday 8am to 6pm b) Monday to Sunday 6pm to 8am, c) 10 hours d) 14 hours e) 23 hours		a) No charge b) No charge	£70.00 per annum  *Half price permits available for electric vehicles only – see Footnote 2.	70	Parked in a loading place or bay during restricted hours without loading	Higher level
								71	Parked in an electric vehicles' charging place during restricted hours without charging	Higher level
								73	Parked without payment of the parking charge	Lower level
								74	Using a vehicle in a parking place in connection with the sale or offering or exposing for sale of goods when prohibited	Higher level
								80	Parked for longer than permitted	Lower level
								81	Parked in a restricted area in a car park	Higher level
								82	Parked after the expiry of paid for time	Lower level
								83	Parked in a car park without clearly displaying a valid pay & display ticket or voucher or parking clock	Lower level
								84	Parked with payment made to extend the stay beyond initial time	Lower level
								85	Parked without clearly displaying a valid permit where required	Higher level
High Street Car Park, Chinnor	Wholly within a parking bay, disabled persons parking bay, electric vehicle recharge bay, or motorcycle bay as indicated by surface markings	All classes of vehicles not exceeding 3.5 tonnes (70cwts) laden weight	All days all hours	a) Monday to Sunday 8am to 6pm b) Monday to Sunday 6pm to 8am, c) 2 hours d) 14 hours e) 16 hours	One hour	a) Maximum stay 2 hours - no charge b) No charge	£70.00 per annum  *Half price permits available for electric vehicles only – see Footnote 2.	86	Not parked correctly within the markings of a bay or space	Lower level
								87	Parked in a designated disabled person's parking place without displaying a valid disabled person's badge in the prescribed manner	Higher level
								89	Vehicle parked exceeds maximum weight or height or length permitted	Higher level
								90	Re-parked in the same car park or a car park within the same town withing one hour after leaving	Lower level
								91	Parked in a car park or area not designated for that class of vehicle	Higher level
								92	Parked causing an obstruction	Higher level
								93	Parked in car park when closed	Lower level
								94	Parked in a pay & display car park without clearly displaying two valid pay and display tickets when required	Lower level
								95	Parked in a parking place for a purpose other than that designated	Lower level
								96	Parked with engine running where prohibited	Lower level
Culham Lock, Culham	Wholly within a parking bay, disabled persons parking bay, electric vehicle recharge bay, or motorcycle bay as indicated by surface markings	All classes of vehicles not exceeding 3.5 tonnes (70cwts) laden weight	All days all hours	a) Monday to Sunday 8am to 6pm b) Monday to Sunday 6pm to 8am, c) 10 hours d) 14 hours e) 23 hours		a) No charge b) No charge	£70.00 per annum  *Half price permits available for electric vehicles only – see Footnote 2.	96	Parked with engine running where prohibited	Lower level

1	2	3	4	5	6	7 SCHEDULE OF CHARGES		8 PENALTY CHARGE		
NAME OF PARKING PLACE	POSITION IN WHICH VEHICLE MAY WAIT	PERMITTED CLASSES OF VEHICLE	HOURS AND DAYS OF OPERATION OF PARKING PLACE	PERMITTED PERIOD: a) CHARGING PERIOD b) NON-CHARGING PERIOD c) MAX. DURATION VEHICLES MAY WAIT IN CHARGING PERIOD d) NON-CHARGING PERIOD DURATION e) MAXIMUM STAY DURATION	NO RETURN PERIOD	7a CHARGES FOR PARKING TICKETS a) CHARGING PERIOD b) NON-CHARGING PERIODS  Footnote 1 Footnote 3 Footnote 4	7b SEASON TICKETS AND PERMITS ((EXCL. VAT) WITHIN CHARGING PERIOD  Footnote 1 Footnote 2 Footnote 4	Higher Level £70 Penalty Charge Notice issued £35 if paid within 14 days £70 Notice to Owner issued £105 Charge Certificate issued £113 Case registered at Traffic Enforcement Centre  Lower Level £50 Penalty Charge Notice issued £25 if paid within 14 days £50 Notice to Owner issued £75 Charge Certificate issued £83 Case registered at Traffic Enforcement Centre		
Edinburgh Drive, Didcot	Wholly within a parking bay, disabled persons parking bay, electric vehicle recharge bay, or motorcycle bay as indicated by surface markings	All classes of vehicles	All days all hours	a) Monday to Saturday 8am to 6pm & 10am to 5pm on Sunday b) 6pm to 8am, 6pm Saturday until 10am Sunday, 5pm Sunday to 8am Monday c) 10 hours (7 hours on Sunday) d) 14 hours Monday to Saturday (16 hours Saturday to Sunday and 15 hours Sunday to Monday) e) 23 hours	One hour	a) Not exceeding: b) - up to 1 hour no charge - up to 2 hours £2.00 - up to 3 hours £3.00 - up to 5 hours £4.00 - over 5 hours £6.00  c) No charge				
								70	Parked in a loading place or bay during restricted hours without loading	Higher level
								71	Parked in an electric vehicles' charging place during restricted hours without charging	Higher level
								73	Parked without payment of the parking charge	Lower level
								74	Using a vehicle in a parking place in connection with the sale or offering or exposing for sale of goods when prohibited	Higher level
								80	Parked for longer than permitted	Lower level
								81	Parked in a restricted area in a car park	Higher level
								82	Parked after the expiry of paid for time	Lower level
								83	Parked in a car park without clearly displaying a valid pay & display ticket or voucher or parking clock	Lower level
								84	Parked with payment made to extend the stay beyond initial time	Lower level
								85	Parked without clearly displaying a valid permit where required	Higher level
								86	Not parked correctly within the markings of a bay or space	Lower level
								87	Parked in a designated disabled person's parking place without displaying a valid disabled person's badge in the prescribed manner	Higher level
								89	Vehicle parked exceeds maximum weight or height or length permitted	Higher level
								90	Re-parked in the same car park or a car park within the same town within one hour after leaving	Lower level
								91	Parked in a car park or area not designated for that class of vehicle	Higher level
								92	Parked causing an obstruction	Higher level
93	Parked in car park when closed	Lower level								
94	Parked in a pay & display car park without clearly displaying two valid pay and display tickets when required	Lower level								
95	Parked in a parking place for a purpose other than that designated	Lower level								
96	Parked with engine running where prohibited	Lower level								
Wheel Orchard, Goring	Wholly within a parking bay, disabled persons parking bay, electric vehicle recharge bay, or motorcycle bay as indicated by surface markings	All classes of vehicles not exceeding 3.5 tonnes (70cwt) laden weight	All days all hours	a) Monday to Saturday 8am to 6pm & 10am to 5pm on Sunday b) 6pm to 8am 6pm Saturday until 10am Sunday, 5 pm Sunday to 8am Monday c) 10 hours (7 hours on Sunday) d) 14 hours Monday to Saturday (16 hours Saturday to Sunday and 15 hours Sunday to Monday) e) 23 hours	One hour	a) Not exceeding: - up to 1 hour no charge - up to 2 hours £2.00 - up to 5 hours £4.00 - over 5 hours £5.00  b) No charge	£297.00 per quarter £149.00 per quarter for half price permit * £1,020.00 per annum £510.00 per annum for half price permit *  Market Trader Permit £169.00 per annum £50.00 per quarter  *Half price permits available for electric vehicles only – see Footnote 2.			

1	2	3	4	5	6	7 SCHEDULE OF CHARGES		8 PENALTY CHARGE		
NAME OF PARKING PLACE	POSITION IN WHICH VEHICLE MAY WAIT	PERMITTED CLASSES OF VEHICLE	HOURS AND DAYS OF OPERATION OF PARKING PLACE	PERMITTED PERIOD: a) CHARGING PERIOD b) NON-CHARGING PERIOD c) MAX. DURATION VEHICLES MAY WAIT IN CHARGING PERIOD d) NON-CHARGING PERIOD DURATION e) MAXIMUM STAY DURATION	NO RETURN PERIOD	7a CHARGES FOR PARKING TICKETS a) CHARGING PERIOD b) NON-CHARGING PERIODS  Footnote 1 Footnote 3 Footnote 4	7b SEASON TICKETS AND PERMITS ((EXCL. VAT) WITHIN CHARGING PERIOD  Footnote 1 Footnote 2 Footnote 4	Higher Level £70 Penalty Charge Notice issued £35 if paid within 14 days £70 Notice to Owner issued £105 Charge Certificate issued £113 Case registered at Traffic Enforcement Centre  Lower Level £50 Penalty Charge Notice issued £25 if paid within 14 days £50 Notice to Owner issued £75 Charge Certificate issued £83 Case registered at Traffic Enforcement Centre		
Greys Road, Henley	Wholly within a parking bay, disabled persons parking bay, electric vehicle recharge bay, or motorcycle bay as indicated by surface markings	All classes of vehicles not exceeding 3.5 tonnes (70cwts) laden weight	All days all hours	a) Monday to Saturday 8am to 6pm & 10am to 5pm on Sunday  b) 6pm to 8am 6pm Saturday until 10am Sunday, 5 pm Sunday to 8am Monday  c) 3 hrs.  d) 14 hours Monday to Saturday (16 hours Saturday to Sunday and 15 hours Sunday to Monday)  e) 22 hours	One Hour to any Council car park within Henley-on-Thames	a) Not exceeding:  - up to 1 hour no charge - up to 2 hours £2.00 - up to 3 hours £3.00  b) No charge		70	Parked in a loading place or bay during restricted hours without loading	Higher level
								71	Parked in an electric vehicles' charging place during restricted hours without charging	Higher level
								73	Parked without payment of the parking charge	Lower level
								74	Using a vehicle in a parking place in connection with the sale or offering or exposing for sale of goods when prohibited	Higher level
								80	Parked for longer than permitted	Lower level
								81	Parked in a restricted area in a car park	Higher level
								82	Parked after the expiry of paid for time	Lower level
								83	Parked in a car park without clearly displaying a valid pay & display ticket or voucher or parking clock	Lower level
								84	Parked with payment made to extend the stay beyond initial time	Lower level
								85	Parked without clearly displaying a valid permit where required	Higher level
								86	Not parked correctly within the markings of a bay or space	Lower level
								87	Parked in a designated disabled person's parking place without displaying a valid disabled person's badge in the prescribed manner	Higher level
								89	Vehicle parked exceeds maximum weight or height or length permitted	Higher level
								Kings Road, Henley	Wholly within a parking bay, disabled persons parking bay, electric vehicle recharge bay, or motorcycle bay as indicated by surface markings	All classes of vehicles not exceeding 3.5 tonnes (70cwts) laden weight
91	Parked in a car park or area not designated for that class of vehicle	Higher level								
92	Parked causing an obstruction	Higher level								
93	Parked in car park when closed	Lower level								
94	Parked in a pay & display car park without clearly displaying two valid pay and display tickets when required	Lower level								
95	Parked in a parking place for a purpose other than that designated	Lower level								
96	Parked with engine running where prohibited	Lower level								

1	2	3	4	5	6	7 SCHEDULE OF CHARGES		8 PENALTY CHARGE		
NAME OF PARKING PLACE	POSITION IN WHICH VEHICLE MAY WAIT	PERMITTED CLASSES OF VEHICLE	HOURS AND DAYS OF OPERATION OF PARKING PLACE	PERMITTED PERIOD: a) CHARGING PERIOD b) NON-CHARGING PERIOD c) MAX. DURATION VEHICLES MAY WAIT IN CHARGING PERIOD d) NON-CHARGING PERIOD DURATION e) MAXIMUM STAY DURATION	NO RETURN PERIOD	7a CHARGES FOR PARKING TICKETS a) CHARGING PERIOD b) NON-CHARGING PERIODS  Footnote 1 Footnote 3 Footnote 4	7b SEASON TICKETS AND PERMITS ((EXCL. VAT) WITHIN CHARGING PERIOD  Footnote 1 Footnote 2 Footnote 4	Higher Level £70 Penalty Charge Notice issued £35 if paid within 14 days £70 Notice to Owner issued £105 Charge Certificate issued £113 Case registered at Traffic Enforcement Centre  Lower Level £50 Penalty Charge Notice issued £25 if paid within 14 days £50 Notice to Owner issued £75 Charge Certificate issued £83 Case registered at Traffic Enforcement Centre		
Southfields, Henley	Wholly within a parking bay, disabled persons parking bay, electric vehicle recharge bay, or motorcycle bay as indicated by surface markings	All classes of vehicles not exceeding 3.5 tonnes (70cwt) laden weight	All days all hours	a) Monday to Saturday 8am to 6pm & 10am to 5pm on Sunday b) 6pm to 8am 6pm Saturday until 10am Sunday, 5 pm Sunday to 8am Monday c) 10 hours (7 hours on Sunday) d) 14 hours Monday to Saturday (16 hours Saturday to Sunday and 15 hours Sunday to Monday) e) 23 hours	One Hour to any Council car park within Henley-on-Thames	a) Not exceeding: - up to 5 hours £4.00 - over 5 hours £5.00  b) No charge	£220.00 per quarter £110.00 per quarter for half price permit * £755.00 per annum £377.50 per annum for half price permit *  Market Trader Permit £126.00 per annum £37.00 per quarter  *Half price permits available for electric vehicles only – see Footnote 2.	70	Parked in a loading place or bay during restricted hours without loading	Higher level
								71	Parked in an electric vehicles' charging place during restricted hours without charging	Higher level
								73	Parked without payment of the parking charge	Lower level
								74	Using a vehicle in a parking place in connection with the sale or offering or exposing for sale of goods when prohibited	Higher level
								80	Parked for longer than permitted	Lower level
								81	Parked in a restricted area in a car park	Higher level
								82	Parked after the expiry of paid for time	Lower level
								83	Parked in a car park without clearly displaying a valid pay & display ticket or voucher or parking clock	Lower level
								84	Parked with payment made to extend the stay beyond initial time	Lower level
								85	Parked without clearly displaying a valid permit where required	Higher level
								86	Not parked correctly within the markings of a bay or space	Lower level
								87	Parked in a designated disabled person's parking place without displaying a valid disabled person's badge in the prescribed manner	Higher level
								89	Vehicle parked exceeds maximum weight or height or length permitted	Higher level
								90	Re-parked in the same car park or a car park within the same town within one hour after leaving	Lower level
								91	Parked in a car park or area not designated for that class of vehicle	Higher level
								Cattlemarket, Thame	Wholly within a parking bay, disabled persons parking bay, electric vehicle recharge bay, or motorcycle bay as indicated by surface markings	All classes of vehicles not exceeding 3.5 tonnes (70cwt) laden weight
93	Parked in car park when closed	Lower level								
94	Parked in a pay & display car park without clearly displaying two valid pay and display tickets when required	Lower level								
95	Parked in a parking place for a purpose other than that designated	Lower level								
96	Parked with engine running where prohibited	Lower level								

1	2	3	4	5	6	7 SCHEDULE OF CHARGES		8 PENALTY CHARGE		
NAME OF PARKING PLACE	POSITION IN WHICH VEHICLE MAY WAIT	PERMITTED CLASSES OF VEHICLE	HOURS AND DAYS OF OPERATION OF PARKING PLACE	PERMITTED PERIOD: a) CHARGING PERIOD b) NON-CHARGING PERIOD c) MAX. DURATION VEHICLES MAY WAIT IN CHARGING PERIOD d) NON-CHARGING PERIOD DURATION e) MAXIMUM STAY DURATION	NO RETURN PERIOD	7a CHARGES FOR PARKING TICKETS a) CHARGING PERIOD b) NON-CHARGING PERIODS  Footnote 1 Footnote 3 Footnote 4	7b SEASON TICKETS AND PERMITS ((EXCL. VAT) WITHIN CHARGING PERIOD  Footnote 1 Footnote 2 Footnote 4	Higher Level £70 Penalty Charge Notice issued £35 if paid within 14 days £70 Notice to Owner issued £105 Charge Certificate issued £113 Case registered at Traffic Enforcement Centre  Lower Level £50 Penalty Charge Notice issued £25 if paid within 14 days £50 Notice to Owner issued £75 Charge Certificate issued £83 Case registered at Traffic Enforcement Centre		
Southern Road, Thame	Wholly within a parking bay, disabled persons parking bay, electric vehicle recharge bay, or motorcycle bay as indicated by surface markings	All classes of vehicles not exceeding 3.5 tonnes (70cwt) laden weight	All days all hours	a) Monday to Saturday 8am to 6pm & 10am to 5pm on Sunday  b) 6pm to 8am 6pm Saturday until 10am Sunday, 5 pm Sunday to 8am Monday  c) 3 hrs.  d) 14 hours Monday to Saturday (16 hours Saturday to Sunday and 15 hours Sunday to Monday)  e) 22hours	One Hour to any Council car park within Thame	a) Not exceeding:  - up to 1 hour no charge - up to 2 hours £2.00 - up to 3 hours £3.00  b) No charge		70	Parked in a loading place or bay during restricted hours without loading	Higher level
								71	Parked in an electric vehicles' charging place during restricted hours without charging	Higher level
								73	Parked without payment of the parking charge	Lower level
								74	Using a vehicle in a parking place in connection with the sale or offering or exposing for sale of goods when prohibited	Higher level
								80	Parked for longer than permitted	Lower level
								81	Parked in a restricted area in a car park	Higher level
								82	Parked after the expiry of paid for time	Lower level
								83	Parked in a car park without clearly displaying a valid pay & display ticket or voucher or parking clock	Lower level
								84	Parked with payment made to extend the stay beyond initial time	Lower level
								85	Parked without clearly displaying a valid permit where required	Higher level
Thames Street, Wallingford	Wholly within a parking bay, disabled persons parking bay, electric vehicle recharge bay, or motorcycle bay as indicated by surface markings	All classes of vehicles not exceeding 3.5 tonnes (70cwt) laden weight	All days all hours	a) Monday to Saturday 8am to 6pm & 10am to 5pm on Sunday  b) 6pm to 8am 6pm Saturday until 10am Sunday, 5 pm Sunday to 8am Monday  c) 10 hours (7 hours on Sunday)  d) 14 hours Monday to Saturday (16 hours Saturday to Sunday and 15 hours Sunday to Monday)  e) 23 hours	One Hour to any Council car park within Wallingford	a) Not exceeding:  - up to 1 hour no charge - up to 2 hours £2.00 - up to 5 hours £3.00 - over 5 hours £4.00  b) No charge	£165.00 per quarter £83.00 per quarter for half price permit * £567.00 per annum £283.00 per annum for half price permit *  *Half price permits available for electric vehicles only – see Footnote 2.	86	Not parked correctly within the markings of a bay or space	Lower level
								87	Parked in a designated disabled person's parking place without displaying a valid disabled person's badge in the prescribed manner	Higher level
								89	Vehicle parked exceeds maximum weight or height or length permitted	Higher level
								90	Re-parked in the same car park or a car park within the same town within one hour after leaving	Lower level
								91	Parked in a car park or area not designated for that class of vehicle	Higher level
								92	Parked causing an obstruction	Higher level
								93	Parked in car park when closed	Lower level
								94	Parked in a pay & display car park without clearly displaying two valid pay and display tickets when required	Lower level
								95	Parked in a parking place for a purpose other than that designated	Lower level
								96	Parked with engine running where prohibited	Lower level

1	2	3	4	5	6	7 SCHEDULE OF CHARGES		8 PENALTY CHARGE		
NAME OF PARKING PLACE	POSITION IN WHICH VEHICLE MAY WAIT	PERMITTED CLASSES OF VEHICLE	HOURS AND DAYS OF OPERATION OF PARKING PLACE	PERMITTED PERIOD: a) CHARGING PERIOD b) NON-CHARGING PERIOD c) MAX. DURATION VEHICLES MAY WAIT IN CHARGING PERIOD d) NON-CHARGING PERIOD DURATION e) MAXIMUM STAY DURATION	NO RETURN PERIOD	7a CHARGES FOR PARKING TICKETS a) CHARGING PERIOD b) NON-CHARGING PERIODS  Footnote 1 Footnote 3 Footnote 4	7b SEASON TICKETS AND PERMITS ((EXCL. VAT) WITHIN CHARGING PERIOD  Footnote 1 Footnote 2 Footnote 4	Higher Level £70 Penalty Charge Notice issued £35 if paid within 14 days £70 Notice to Owner issued £105 Charge Certificate issued £113 Case registered at Traffic Enforcement Centre  Lower Level £50 Penalty Charge Notice issued £25 if paid within 14 days £50 Notice to Owner issued £75 Charge Certificate issued £83 Case registered at Traffic Enforcement Centre		
Cattlemarket, Wallingford	Wholly within a parking bay, disabled persons parking bay, electric vehicle recharge bay, or motorcycle bay as indicated by surface markings	All classes of vehicles	All days all hours	a) Monday to Saturday 8am to 6pm & 10am to 5pm on Sunday b) 6pm to 8am 6pm Saturday until 10am Sunday, 5 pm Sunday to 8am Monday c) 10 hours (7 hours on Sunday) d) 14 hours Monday to Saturday (16 hours Saturday to Sunday and 15 hours Sunday to Monday) e) 23 hours	One Hour to any Council car park within Wallingford	a) Not exceeding: - up to 1 hour no charge - up to 2 hours £2.00 - up to 5 hours £3.00 - over 5 hours £4.00  b) No charge	£165.00 per quarter £83.00 per quarter for half price permit * £567.00 per annum £283.00 per annum for half price permit *  Market Trader Permit £95.00 per annum £28.00 per quarter  *Half price permits available for electric vehicles only – see Footnote 2.	70	Parked in a loading place or bay during restricted hours without loading	Higher level
Castle Street, Wallingford	Wholly within a parking bay, disabled persons parking bay, electric vehicle recharge bay, or motorcycle bay as indicated by surface markings	All classes of vehicles not exceeding 3.5 tonnes (70cwt) laden weight	All days all hours	a) Monday to Saturday 8am to 6pm & 10am to 5pm on Sunday b) 6pm to 8am 6pm Saturday until 10am Sunday, 5 pm Sunday to 8am Monday c) 10 hours (7 hours on Sunday) d) 14 hours Monday to Saturday (16 hours Saturday to Sunday and 15 hours Sunday to Monday) e) 23 hours	One Hour to any Council car park within Wallingford	a) Not exceeding: - up to 10 hours £3.00  b) No charge	£127.00 per quarter £64.00 per quarter for half price permit * £435.00 per annum £218.00 per annum for half price permit *  *Half price permits available for electric vehicles only – see Footnote 2.	71	Parked in an electric vehicles' charging place during restricted hours without charging	Higher level
								73	Parked without payment of the parking charge	Lower level
								74	Using a vehicle in a parking place in connection with the sale or offering or exposing for sale of goods when prohibited	Higher level
								80	Parked for longer than permitted	Lower level
								81	Parked in a restricted area in a car park	Higher level
								82	Parked after the expiry of paid for time	Lower level
								83	Parked in a car park without clearly displaying a valid pay & display ticket or voucher or parking clock	Lower level
								84	Parked with payment made to extend the stay beyond initial time	Lower level
								85	Parked without clearly displaying a valid permit where required	Higher level
								86	Not parked correctly within the markings of a bay or space	Lower level
								87	Parked in a designated disabled person's parking place without displaying a valid disabled person's badge in the prescribed manner	Higher level
								89	Vehicle parked exceeds maximum weight or height or length permitted	Higher level
								90	Re-parked in the same car park or a car park within the same town within one hour after leaving	Lower level
								91	Parked in a car park or area not designated for that class of vehicle	Higher level
								92	Parked causing an obstruction	Higher level
								93	Parked in car park when closed	Lower level
94	Parked in a pay & display car park without clearly displaying two valid pay and display tickets when required	Lower level								
95	Parked in a parking place for a purpose other than that designated	Lower level								
96	Parked with engine running where prohibited	Lower level								

1	2	3	4	5	6	7 SCHEDULE OF CHARGES		8 PENALTY CHARGE										
NAME OF PARKING PLACE	POSITION IN WHICH VEHICLE MAY WAIT	PERMITTED CLASSES OF VEHICLE	HOURS AND DAYS OF OPERATION OF PARKING PLACE	PERMITTED PERIOD: a) CHARGING PERIOD b) NON-CHARGING PERIOD c) MAX. DURATION VEHICLES MAY WAIT IN CHARGING PERIOD d) NON-CHARGING PERIOD DURATION e) MAXIMUM STAY DURATION	NO RETURN PERIOD	7a CHARGES FOR PARKING TICKETS a) CHARGING PERIOD b) NON-CHARGING PERIODS  Footnote 1 Footnote 3 Footnote 4	7b SEASON TICKETS AND PERMITS (EXCL. VAT) WITHIN CHARGING PERIOD  Footnote 1 Footnote 2 Footnote 4	Higher Level £70 Penalty Charge Notice issued £35 if paid within 14 days £70 Notice to Owner issued £105 Charge Certificate issued £113 Case registered at Traffic Enforcement Centre  Lower Level £50 Penalty Charge Notice issued £25 if paid within 14 days £50 Notice to Owner issued £75 Charge Certificate issued £83 Case registered at Traffic Enforcement Centre										
Goldsmiths Lane, Wallingford	Wholly within a parking bay, disabled persons parking bay, electric vehicle recharge bay, or motorcycle bay as indicated by surface markings	All classes of vehicles	All days all hours	a) Monday to Friday 9am to 5pm & 9am to 2pm on Saturday b) Monday to Saturday 5pm to 9am and from 2pm on Saturday and throughout Sunday c) 8 hours (5 hours on Saturday) d) 16 hours Monday to Friday 19 hours on Saturdays and 24 hours on Sunday e) 23 hours	One Hour to any Council car park within Wallingford	a) Not exceeding: - up to 1 hours no charge - up to 2 hours no charge - up to 5 hours £3.00 - over 5 hours £4.00  b) No charge	£180.00 per quarter £90.00 per quarter for half price permit * £617.00 per annum £308.50 per annum for half price permit *  *Half price permits available for electric vehicles only – see Footnote 2.	70	Parked in a loading place or bay during restricted hours without loading	Higher level								
								71	Parked in an electric vehicles' charging place during restricted hours without charging	Higher level								
								73	Parked without payment of the parking charge	Lower level								
								74	Using a vehicle in a parking place in connection with the sale or offering or exposing for sale of goods when prohibited	Higher level								
								80	Parked for longer than permitted	Lower level								
								81	Parked in a restricted area in a car park	Higher level								
								82	Parked after the expiry of paid for time	Lower level								
								83	Parked in a car park without clearly displaying a valid pay & display ticket or voucher or parking clock	Lower level								
								84	Parked with payment made to extend the stay beyond initial time	Lower level								
								85	Parked without clearly displaying a valid permit where required	Higher level								
								86	Not parked correctly within the markings of a bay or space	Lower level								
								St Georges, Wallingford	Wholly within a parking bay, disabled persons parking bay, electric vehicle recharge bay, or motorcycle bay as indicated by surface markings	All classes of vehicles not exceeding 3.5 tonnes (70cwts) laden weight	All days all hours	a) Monday to Saturday 8am to 6pm & 10am to 5pm on Sunday b) 6pm to 8am 6pm Saturday until 10am Sunday, 5 pm Sunday to 8am Monday c) 10 hours (7 hours on Sunday) d) 14 hours Monday to Saturday (16 hours Saturday to Sunday and 15 hours Sunday to Monday) e) 23 hours	One Hour to any Council car park within Wallingford	a) Not exceeding: - up to 10 hours £3.00  b) No charge	£127.00 per quarter £64.00 per quarter for half price permit * £435.00 per annum £218.00 per annum for half price permit *  *Half price permits available for electric vehicles only – see Footnote 2.	87	Parked in a designated disabled person's parking place without displaying a valid disabled person's badge in the prescribed manner	Higher level
																89	Vehicle parked exceeds maximum weight or height or length permitted	Higher level
																90	Re-parked in the same car park or a car park within the same town within one hour after leaving	Lower level
																91	Parked in a car park or area not designated for that class of vehicle	Higher level
																92	Parked causing an obstruction	Higher level
																93	Parked in car park when closed	Lower level
94	Parked in a pay & display car park without clearly displaying two valid pay and display tickets when required	Lower level																
95	Parked in a parking place for a purpose other than that designated	Lower level																
96	Parked with engine running where prohibited	Lower level																
Riverside, Wallingford Winter Season (1 November to 28/29 February)	Wholly within a parking bay, disabled persons parking bay, electric vehicle recharge bay, or motorcycle bay as indicated by surface markings	All classes of vehicles not exceeding 3.5 tonnes (70cwts) laden weight	All days all hours	a) Monday to Sunday 8am to 6pm b) Monday to Sunday 6pm to 8am c) 10 hours 6pm to 8am d) 14 hours e) 23 hours	One Hour to any Council car park within Wallingford	a) No charge  b) No charge												



1	2	3	4	5	6	7 SCHEDULE OF CHARGES		8 PENALTY CHARGE	
NAME OF PARKING PLACE	POSITION IN WHICH VEHICLE MAY WAIT	PERMITTED CLASSES OF VEHICLE	HOURS AND DAYS OF OPERATION OF PARKING PLACE	PERMITTED PERIOD: a) CHARGING PERIOD b) NON-CHARGING PERIOD c) MAX. DURATION VEHICLES MAY WAIT IN CHARGING PERIOD d) NON-CHARGING PERIOD DURATION e) MAXIMUM STAY DURATION	NO RETURN PERIOD	7a CHARGES FOR PARKING TICKETS a) CHARGING PERIOD b) NON-CHARGING PERIODS  Footnote 1 Footnote 3 Footnote 4	7b SEASON TICKETS AND PERMITS ((EXCL. VAT) WITHIN CHARGING PERIOD  Footnote 1 Footnote 2 Footnote 4	Higher Level £70 Penalty Charge Notice issued £35 if paid within 14 days £70 Notice to Owner issued £105 Charge Certificate issued £113 Case registered at Traffic Enforcement Centre  Lower Level £50 Penalty Charge Notice issued £25 if paid within 14 days £50 Notice to Owner issued £75 Charge Certificate issued £83 Case registered at Traffic Enforcement Centre	
Riverside, Wallingford Low Season (1 March to 30 June and 1 September to 31 October)	Wholly within a parking bay, disabled persons parking bay, electric vehicle recharge bay, or motorcycle bay as indicated by surface markings	All classes of vehicles not exceeding 3.5 tonnes (70cwts) laden weight	All days all hours 1 March to 30 June and 1 September to 31 October	a) Monday to Saturday 8am to 6pm & 10am to 5pm on Sunday	One Hour to any Council car park within Wallingford	a) Not exceeding: - up to 1 hour £0.00 - up to 3 hours £2.00 - up to 10 hours £4.00  b) No charge	£165.00 per quarter £83.00 per quarter for half price permit * £566.00 per annum £283.00 per annum for half price permit *  (Swimmer's permit holders - no charge, maximum stay 1.5 hours)  *Half price permits available for electric vehicles only – see Footnote 2.		
				b) 6pm to 8am 6pm Saturday until 10am Sunday, 5 pm Sunday to 8am Monday				70 Parked in a loading place or bay during restricted hours without loading Higher level	71 Parked in an electric vehicles' charging place during restricted hours without charging Higher level
Riverside, Wallingford High Season (1 July to 31 August)	Wholly within a parking bay, disabled persons parking bay, electric vehicle recharge bay, or motorcycle bay as indicated by surface markings	All classes of vehicles not exceeding 3.5 tonnes (70cwts) laden weight	All days all hours 1 July to 31 August	a) Monday to Saturday 8am to 6pm & 10am to 5pm on Sunday	One Hour to any Council car park within Wallingford	a) Not exceeding: - up to 1 hour £0.00 - up to 2 hours £2.00 - up to 5 hours £3.00 - over 5 hours £4.00  b) No charge	£165.00 per quarter £83.00 per quarter for half price permit * £566.00 per annum £283.00 per annum for half price permit *  (Swimmer's permit holders - no charge, maximum stay 1.5 hours)  *Half price permits available for electric vehicles only – see Footnote 2.		
				b) 6pm to 8am 6pm Saturday until 10am Sunday, 5 pm Sunday to 8am Monday				73 Parked without payment of the parking charge Lower level	74 Using a vehicle in a parking place in connection with the sale or offering or exposing for sale of goods when prohibited Higher level
				c) 10 hours (7 hours on Sunday)				80 Parked for longer than permitted Lower level	81 Parked in a restricted area in a car park Higher level
				d) 14 hours Monday to Saturday (16 hours Saturday to Sunday and 15 hours Sunday to Monday)				82 Parked after the expiry of paid for time Lower level	83 Parked in a car park without clearly displaying a valid pay & display ticket or voucher or parking clock Lower level
				e) 23 hours				84 Parked with payment made to extend the stay beyond initial time Lower level	85 Parked without clearly displaying a valid permit where required Higher level
								86 Not parked correctly within the markings of a bay or space Lower level	87 Parked in a designated disabled person's parking place without displaying a valid disabled person's badge in the prescribed manner Higher level
								89 Vehicle parked exceeds maximum weight or height or length permitted Higher level	90 Re-parked in the same car park or a car park within the same town within one hour after leaving Lower level
								91 Parked in a car park or area not designated for that class of vehicle Higher level	92 Parked causing an obstruction Higher level
								93 Parked in car park when closed Lower level	94 Parked in a pay & display car park without clearly displaying two valid pay and display tickets when required Lower level
								95 Parked in a parking place for a purpose other than that designated Lower level	96 Parked with engine running where prohibited Lower level

1 NAME OF PARKING PLACE	2 POSITION IN WHICH VEHICLE MAY WAIT	3 PERMITTED CLASSES OF VEHICLE	4 HOURS AND DAYS OF OPERATION OF PARKING PLACE	5 PERMITTED PERIOD: a) CHARGING PERIOD b) NON-CHARGING PERIOD c) MAX. DURATION VEHICLES MAY WAIT IN CHARGING PERIOD d) NON-CHARGING PERIOD DURATION e) MAXIMUM STAY DURATION	6 NO RETURN PERIOD	7 SCHEDULE OF CHARGES		8 PENALTY CHARGE
						7a CHARGES FOR PARKING TICKETS a) CHARGING PERIOD b) NON-CHARGING PERIODS  Footnote 1 Footnote 3 Footnote 4	7b SEASON TICKETS AND PERMITS ((EXCL. VAT) WITHIN CHARGING PERIOD  Footnote 1 Footnote 2 Footnote 4	
Church Road, Wheatley	Wholly within a parking bay, disabled persons parking bay, electric vehicle recharge bay, or motorcycle bay as indicated by surface markings	All classes of vehicles not exceeding 3.5 tonnes (70cwts) laden weight	All days all hours	a) Monday to Sunday 8am to 6pm		a) No charge	£70.00 per annum  Half price permits available for electric vehicles only – see Footnote 2.	Higher Level £70 Penalty Charge Notice issued £35 if paid within 14 days £70 Notice to Owner issued £105 Charge Certificate issued £113 Case registered at Traffic Enforcement Centre
				b) Monday to Sunday 6pm to 8am,		b) No charge		Lower Level £50 Penalty Charge Notice issued £25 if paid within 14 days £50 Notice to Owner issued £75 Charge Certificate issued £83 Case registered at Traffic Enforcement Centre
				c) 4 hours				70 Parked in a loading place or bay during restricted hours without loading Higher level
				d) 14 hours				71 Parked in an electric vehicles' charging place during restricted hours without charging Higher level
				e) 18 hours				73 Parked without payment of the parking charge Lower level
								74 Using a vehicle in a parking place in connection with the sale or offering or exposing for sale of goods when prohibited Higher level
								80 Parked for longer than permitted Lower level
								81 Parked in a restricted area in a car park Higher level
								82 Parked after the expiry of paid for time Lower level
								83 Parked in a car park without clearly displaying a valid pay & display ticket or voucher or parking clock Lower level
								84 Parked with payment made to extend the stay beyond initial time Lower level
								85 Parked without clearly displaying a valid permit where required Higher level
								86 Not parked correctly within the markings of a bay or space Lower level
								87 Parked in a designated disabled person's parking place without displaying a valid disabled person's badge in the prescribed manner Higher level
								89 Vehicle parked exceeds maximum weight or height or length permitted Higher level
								90 Re-parked in the same car park or a car park within the same town within one hour after leaving Lower level
								91 Parked in a car park or area not designated for that class of vehicle Higher level
		92 Parked causing an obstruction Higher level						
		93 Parked in car park when closed Lower level						
		94 Parked in a pay & display car park without clearly displaying two valid pay and display tickets when required Lower level						
		95 Parked in a parking place for a purpose other than that designated Lower level						
		96 Parked with engine running where prohibited Lower level						

Footnote 1: The Council will charge £12 when asked to issue replacement tickets or permits.

Footnote 2: The owner of an electric vehicle (those vehicles able to travel at least 20 miles with zero CO2) may apply to the Council for a half price permit – see \* in column 7b.

Footnote 3: No charges apply to motorcycles, and vehicles displaying a disabled person's badge at all car parks.

Footnote 4: A valid ticket or parking permit will be required to be displayed during a charging period at those car parks where charges are payable, including those periods when a charge is not payable.