



Facilities Planning Model Assessment of
Sports Hall Provision for
Vale of White Horse District Council

Layered Maps

14 December 2023

This document has been produced by ORH on behalf of Sport England for Vale of White Horse District Council on 14 December 2023. This document can be reproduced by Vale of White Horse District Council, subject to it being used accurately and not in a misleading context. When the document is reproduced in whole or in part within another publication or service, the full title, date, and accreditation to Sport England must be included.

ORH is the trading name of Operational Research in Health Limited, a company registered in England with company number 2676859.

Disclaimer

The information in this report is presented in good faith using the information available to ORH and Sport England at the time of preparation. It is provided on the basis that the authors of the report are not liable to any person or organisation for any damage or loss which may occur in relation to taking, or not taking, action in respect of any information or advice within the document.

Accreditations

Other than data provided by Vale of White Horse District Council and Sport England, this document also contains data from the following sources:

Ordnance Survey data © Crown copyright and database right. All rights reserved Sport England 100033111 2023.

National Statistics data © Crown copyright and database right 2023.

Population distribution based on 2021 Census data for output areas. Population for 2023 and 2041 modified by 2018-based Subnational Population Projections for Local Authorities. Adapted from data from the Office for National Statistics licensed under the Open Government Licence v.3.0. London boroughs modified by © GLA 2021-based demographic projections – ward populations, identified capacity scenario.

Index of Multiple Deprivation data contains public sector information licensed under the Open Government Licence v3.0.

Contents

1.	Demand for Sports Halls	1
2.	Transport Access to Sports Halls	6
3.	Export of Satisfied Demand and Import of Used Capacity	14
4.	Unmet Demand	18
5.	Reachable Unmet Demand	22
6.	Local Share	26

1. DEMAND FOR SPORTS HALLS

Run 1: Existing Provision (2023)

Run 2: Forward Projection (2041)

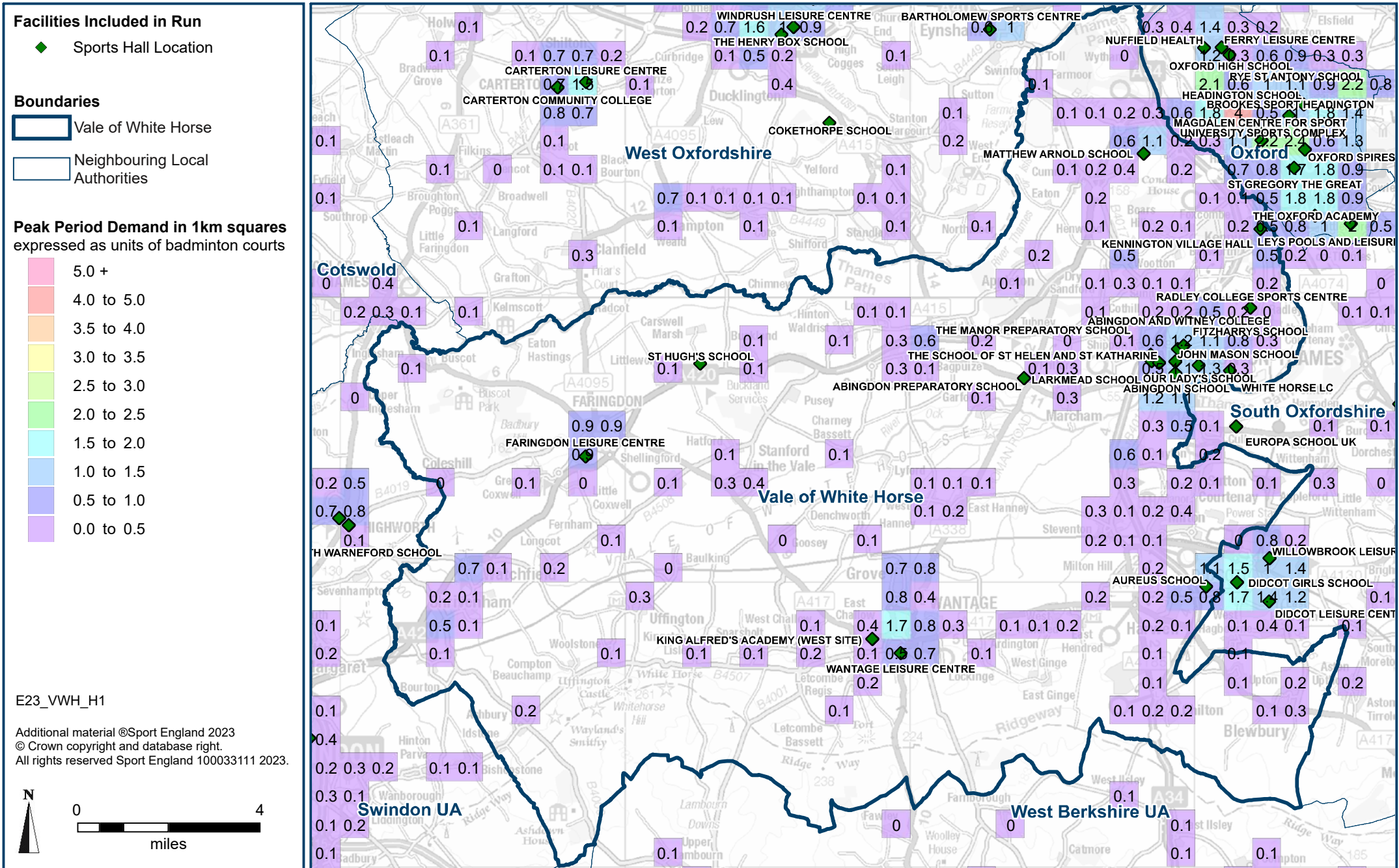
Run 3: Options for Changes to Supply Scenario 1 (2041)

Deprivation (IMD 2019)

Facilities Planning Model - Halls Demand for Vale of White Horse

RUN 1: Existing Provision (2023)

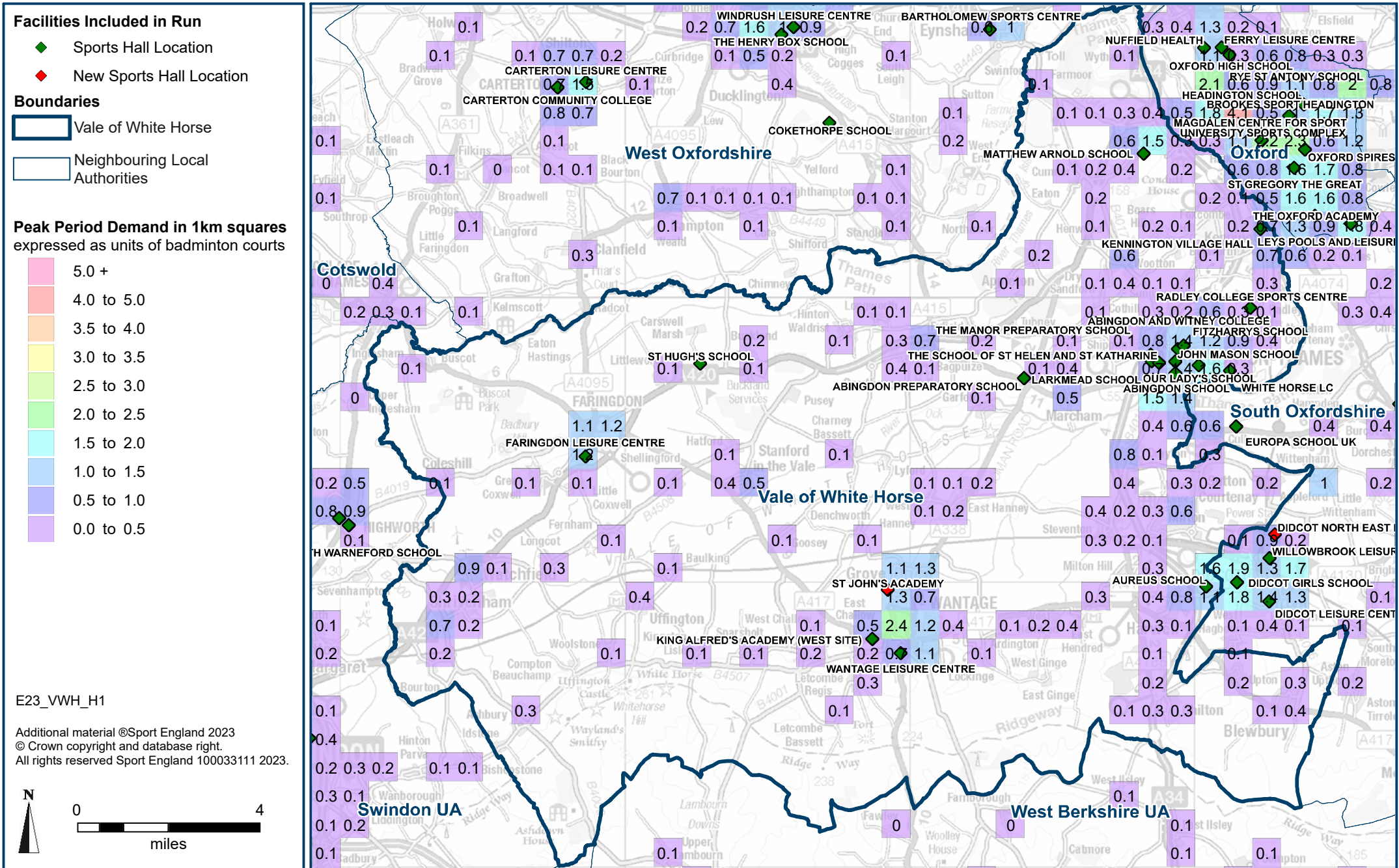
Peak period demand aggregated at 1km square grid level expressed as number of badminton courts (figure labels) and shown thematically (colours).



Facilities Planning Model - Halls Demand for Vale of White Horse

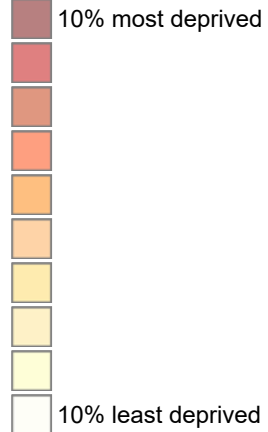
RUN 2: Forward Projection (2041)

Peak period demand aggregated at 1km square grid level expressed as number of badminton courts (figure labels) and shown thematically (colours).



Deprivation shown thematically (colours) at lower super output area level by decile.

Index of Multiple Deprivation (2019)



Facilities Included in Runs

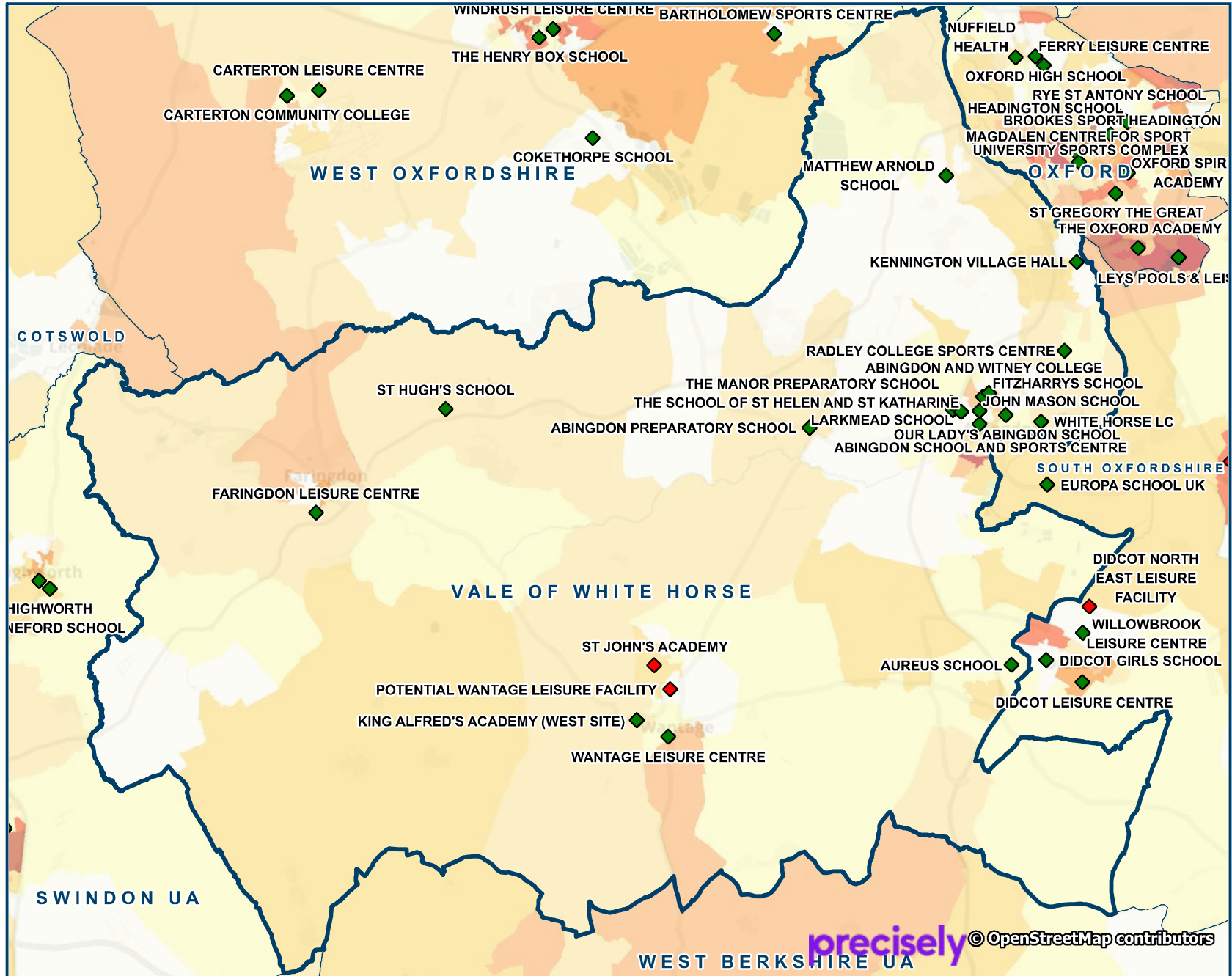
- ◆ Existing Sports Hall Location
- ◆ Proposed Sports Hall Location

Boundaries

- ▭ Vale of White Horse
- ▭ Neighbouring Local Authorities

E23_VWH_H1

Additional material ©Sport England 2023
 © Crown copyright and database right.
 All rights reserved Sport England 100033111 2023.



2. TRANSPORT ACCESS TO SPORTS HALLS

Walking and Driving Coverage

Run 1: Existing Provision (2023)

Run 2: Forward Projection (2041)

Run 3: Options for Changes to Supply Scenario 1 (2041)

Cycle Coverage

Run 1: Existing Provision (2023)

Run 2: Forward Projection (2041)

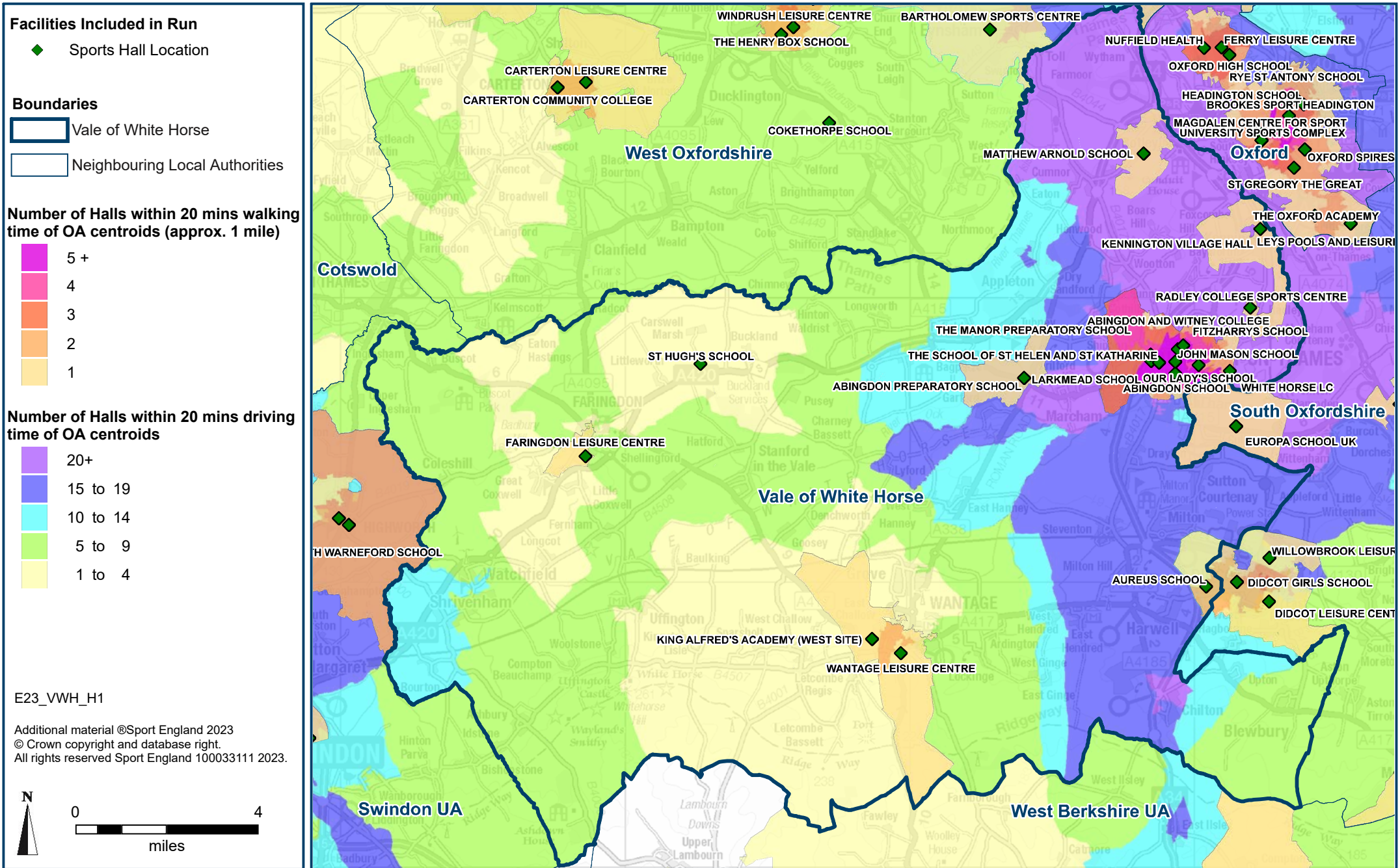
Run 3: Options for Changes to Supply Scenario 1 (2041)

Public Transport Access

Facilities Planning Model - Halls Coverage for Vale of White Horse

RUN 1: Existing Provision (2023)

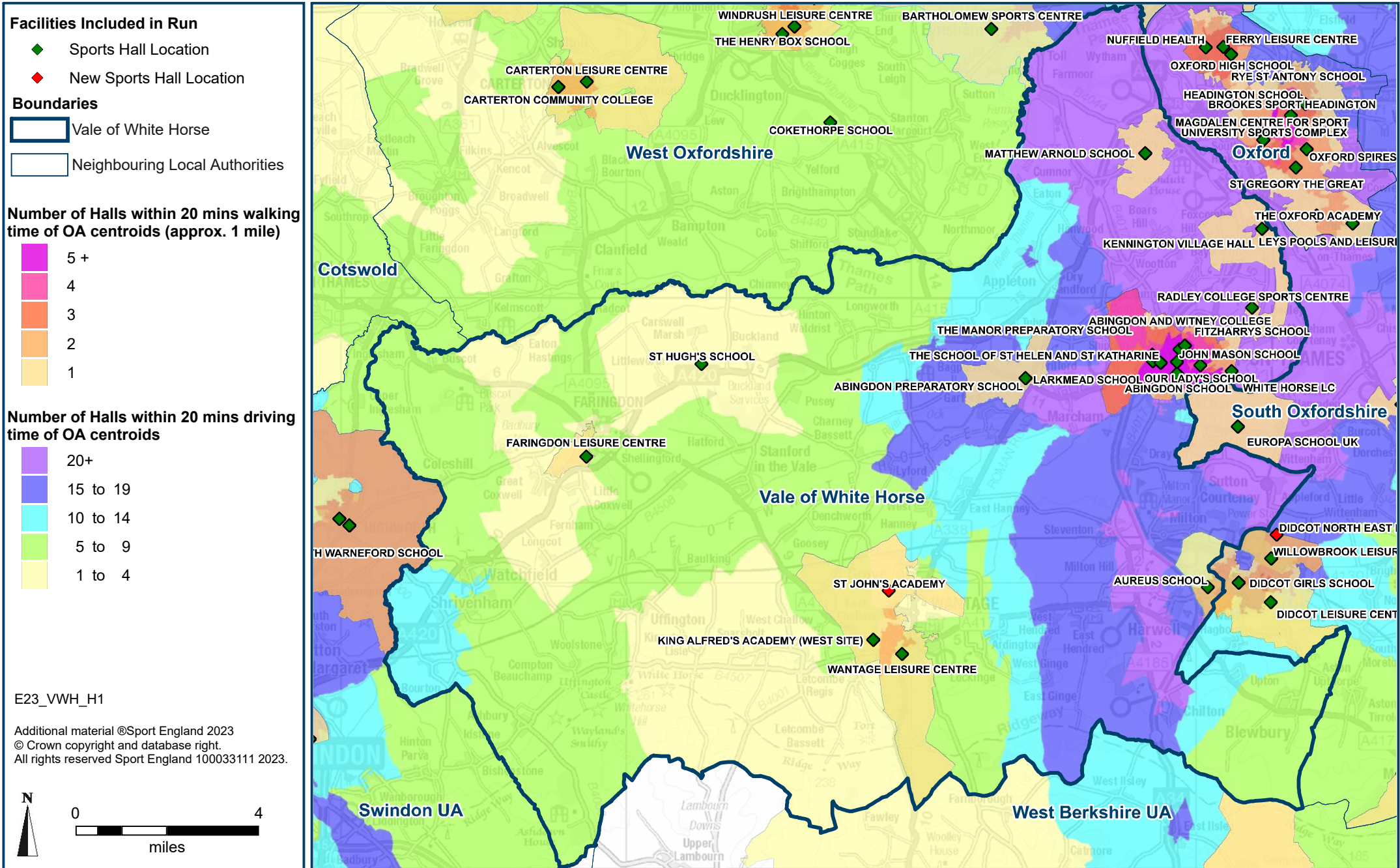
Catchments shown thematically (colours) at output area (OA) level expressed as the number of Halls within 20 minutes travel time of output area centroid.



Facilities Planning Model - Halls Coverage for Vale of White Horse

RUN 2: Forward Projection (2041)

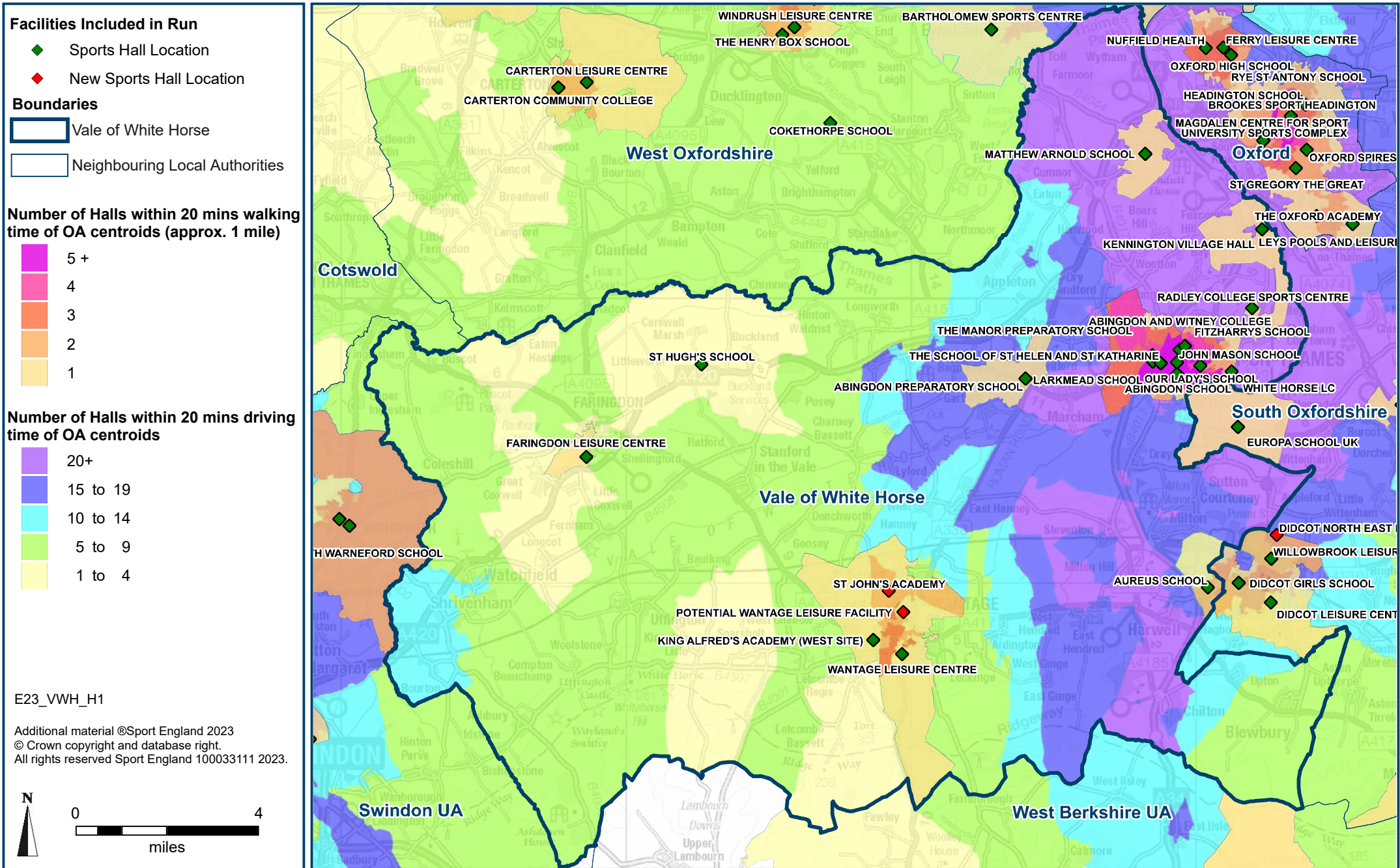
Catchments shown thematically (colours) at output area (OA) level expressed as the number of Halls within 20 minutes travel time of output area centroid.



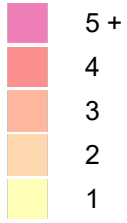
Facilities Planning Model - Halls Coverage for Vale of White Horse

RUN 3: Options for Changes to Supply Scenario 1 (2041)

Catchments shown thematically (colours) at output area (OA) level expressed as the number of Halls within 20 minutes travel time of output area centroid.



Number of sports hall sites within 20 minutes cycle of output area centroids (approximately 4 miles).



Facilities Included in Runs

- ◆ Existing Sports Hall

Boundaries

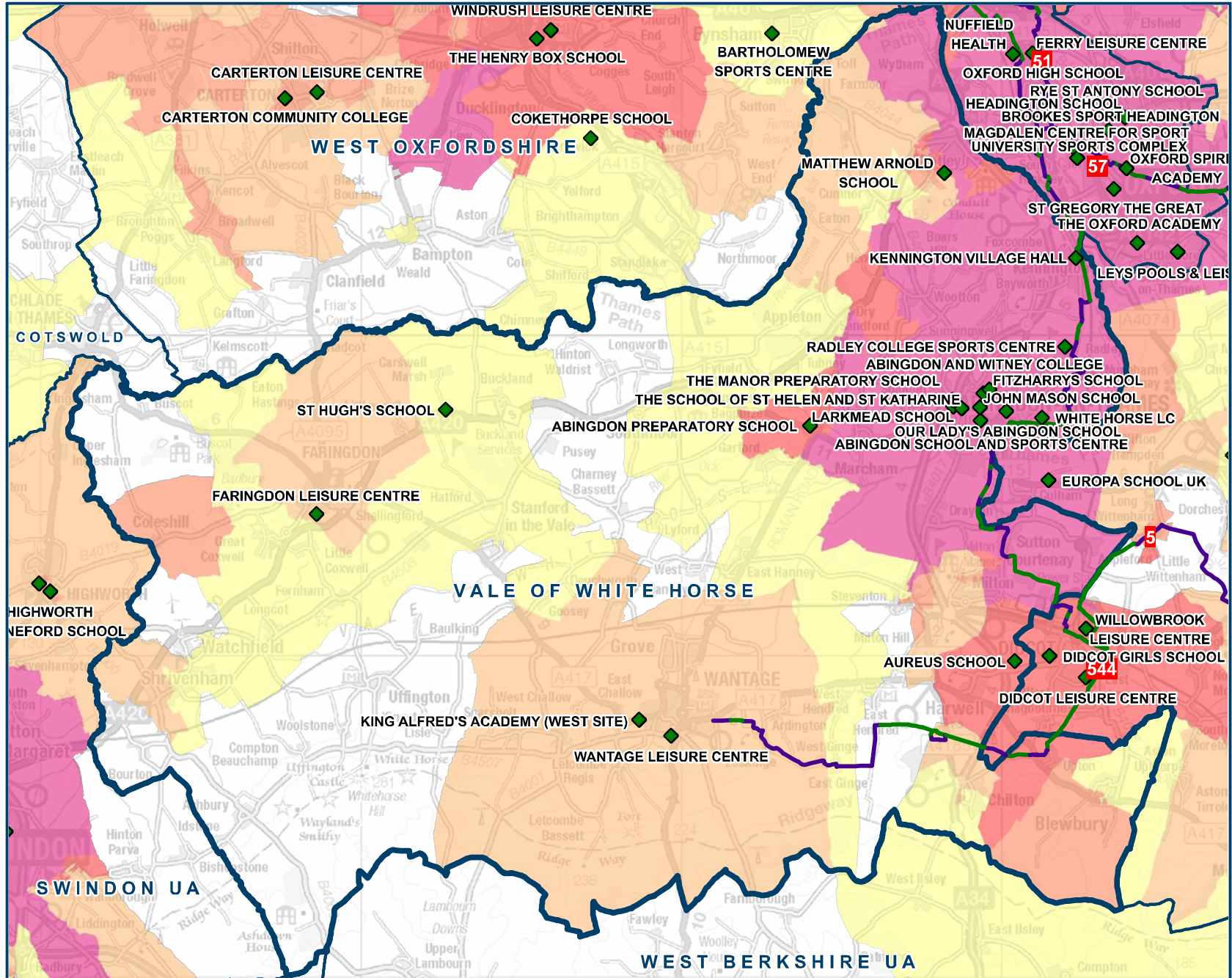
- ▭ Vale of White Horse
- ▭ Neighbouring Local Authorities

National Cycle Network

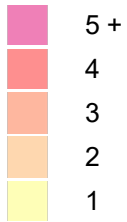
- On Road
- Traffic Free

E23_VWH_H1

Additional material © Sport England 2023
 © Crown copyright and database right.
 All rights reserved Sport England 100033111 2023.



Number of sports hall sites within 20 minutes cycle of output area centroids (approximately 4 miles).



Facilities Included in Runs

- ◆ Existing Sports Hall
- ◆ Proposed Sports Hall

Boundaries

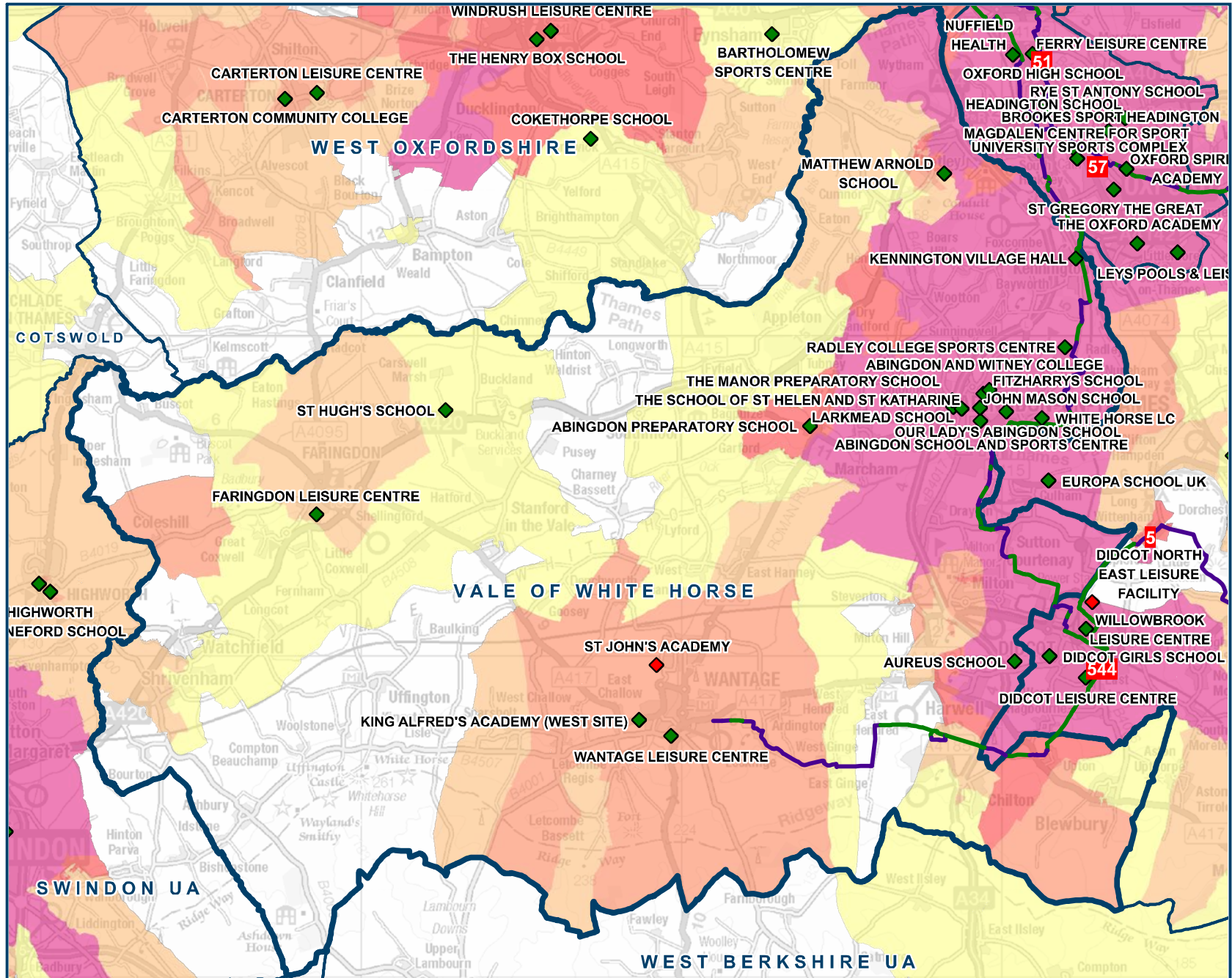
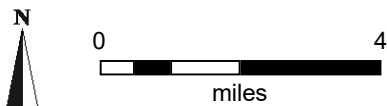
- Vale of White Horse
- Neighbouring Local Authorities

National Cycle Network

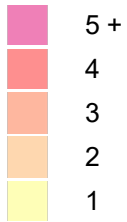
- On Road
- Traffic Free

E23_VWH_H1

Additional material ©Sport England 2023
 © Crown copyright and database right.
 All rights reserved Sport England 100033111 2023.



Number of sports hall sites within 20 minutes cycle of output area centroids (approximately 4 miles).



Facilities Included in Runs

- Existing Sports Hall
- Proposed Sports Hall

Boundaries

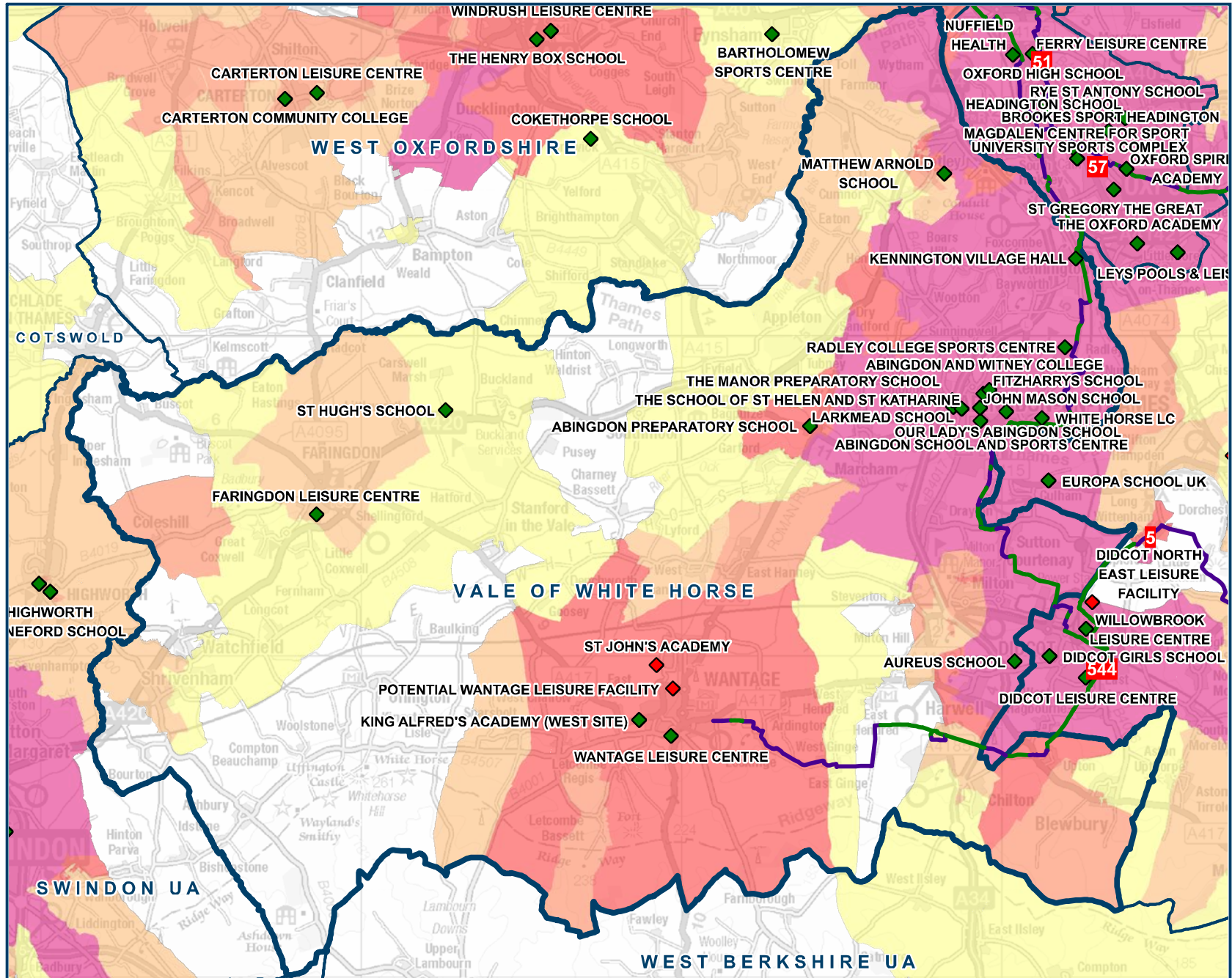
- Vale of White Horse
- Neighbouring Local Authorities

National Cycle Network

- On Road
- Traffic Free

E23_VWH_H1

Additional material © Sport England 2023
 © Crown copyright and database right.
 All rights reserved Sport England 100033111 2023.



Areas within walking time shown thematically (colours) from bus, coach and tram stops, and railway, metro and underground stations.

Public Transport

- Railway/Metro/Underground Station

Walk Time from Station

- 5 minutes
- 10 minutes
- 15 minutes

Walk Time from Bus Stop

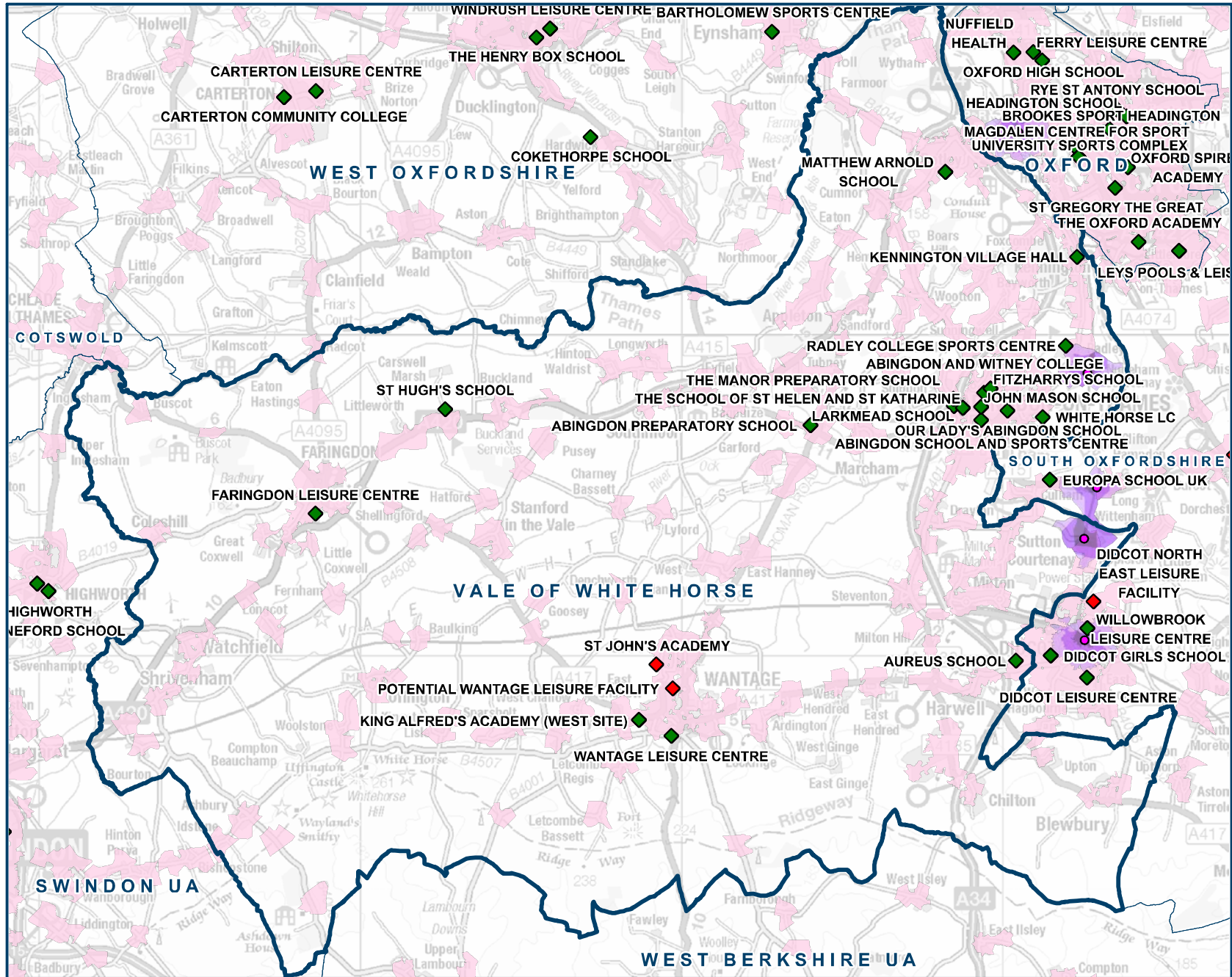
- 5 minutes

Facilities Included in Runs

- ◆ Existing Sports Hall
- ◆ Proposed Sports Hall

Boundaries

- Vale of White Horse
- Neighbouring Local Authorities



E23_TOW_H1

Additional material ©Sport England 2023
 © Crown copyright and database right.
 All rights reserved Sport England 100033111 2023.



3. EXPORT OF SATISFIED DEMAND AND IMPORT OF USED CAPACITY

Run 1: Existing Provision (2023)

Run 2: Forward Projection (2041)

Run 3: Options for Changes to Supply Scenario 1 (2041)

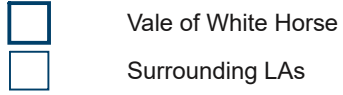
Facility Planning Model - Halls Import/Export for Vale of White Horse

RUN 1: Existing Provision (2023)

Imported and exported demand between study area and surrounding local authorities shown thematically (size of lines) as visits per week in the peak period.

Boundaries

Values in areas show retained vpwpp



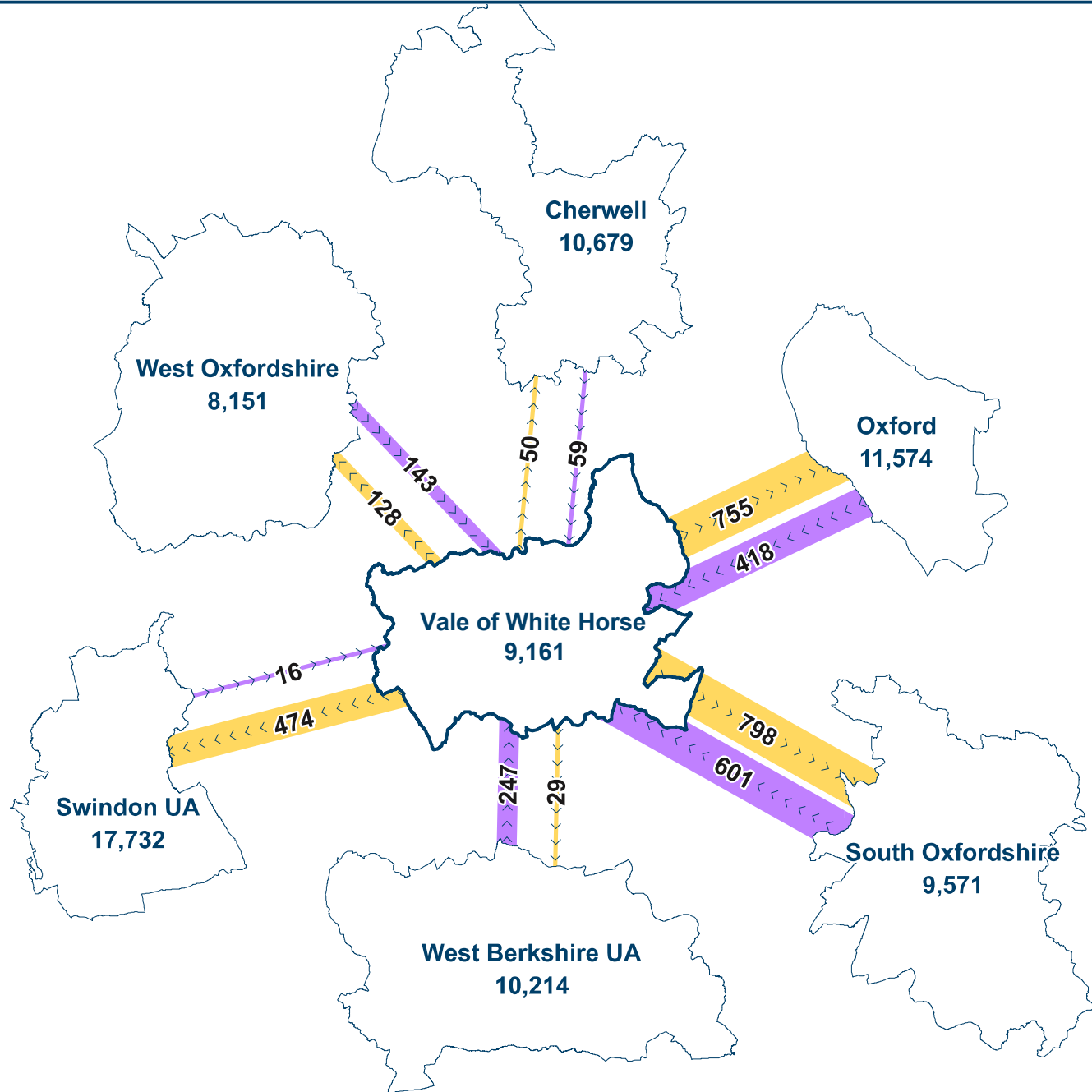
Import/Export

Values on arrows show flow vpwpp

>>>> Direction of flow

Import (represented by a purple arrow)

Export (represented by a yellow arrow)



E23_VWH_H1

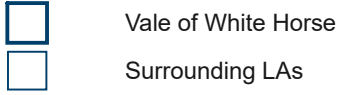
Facility Planning Model - Halls Import/Export for Vale of White Horse

RUN 2: Forward Projection (2041)

Imported and exported demand between study area and surrounding local authorities shown thematically (size of lines) as visits per week in the peak period.

Boundaries

Values in areas show retained vpwpp



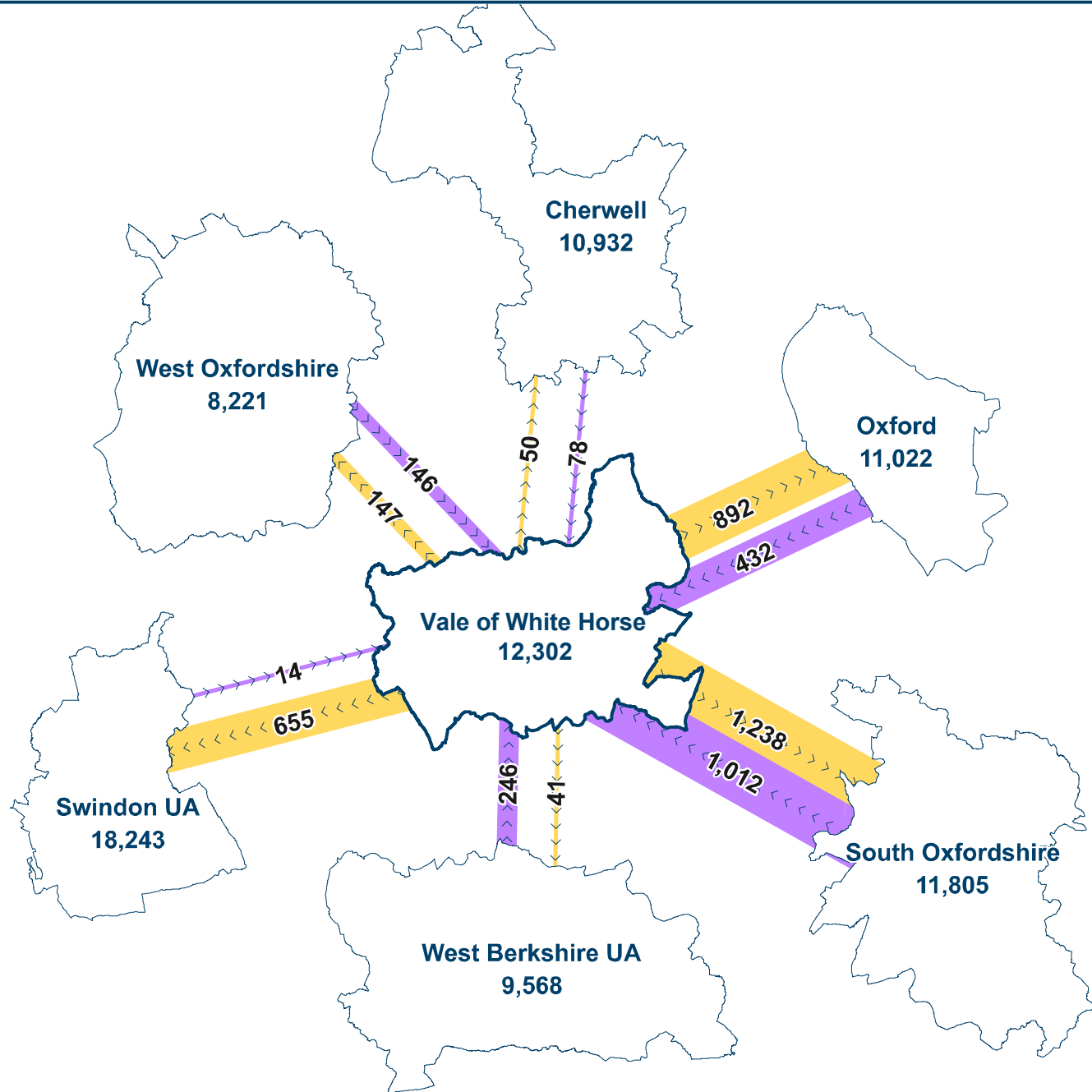
Import/Export

Values on arrows show flow vpwpp

>>>> Direction of flow

Import (represented by a purple arrow)

Export (represented by a yellow arrow)



E23_VWH_H1

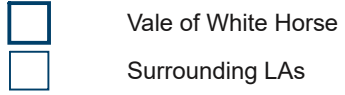
Facility Planning Model - Halls Import/Export for Vale of White Horse

RUN 3: Options for Changes to Supply Scenario 1 (2041)

Imported and exported demand between study area and surrounding local authorities shown thematically (size of lines) as visits per week in the peak period.

Boundaries

Values in areas show retained vpwpp



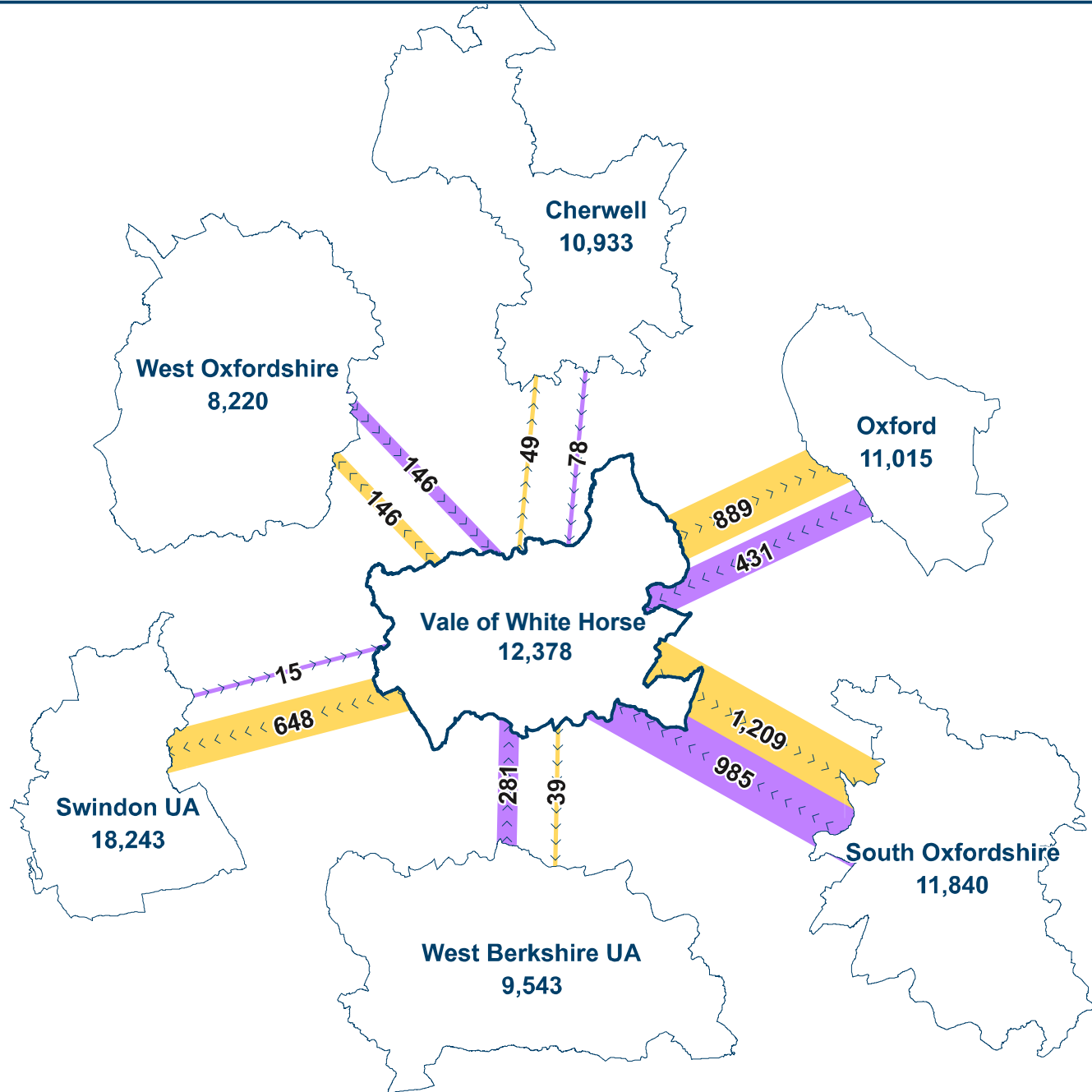
Import/Export

Values on arrows show flow vpwpp

>>>> Direction of flow

Import (represented by a purple arrow)

Export (represented by a yellow arrow)



E23_VWH_H1

4. UNMET DEMAND

Run 1: Existing Provision (2023)

Run 2: Forward Projection (2041)

Run 3: Options for Changes to Supply Scenario 1 (2041)

5. REACHABLE UNMET DEMAND

Run 1: Existing Provision (2023)

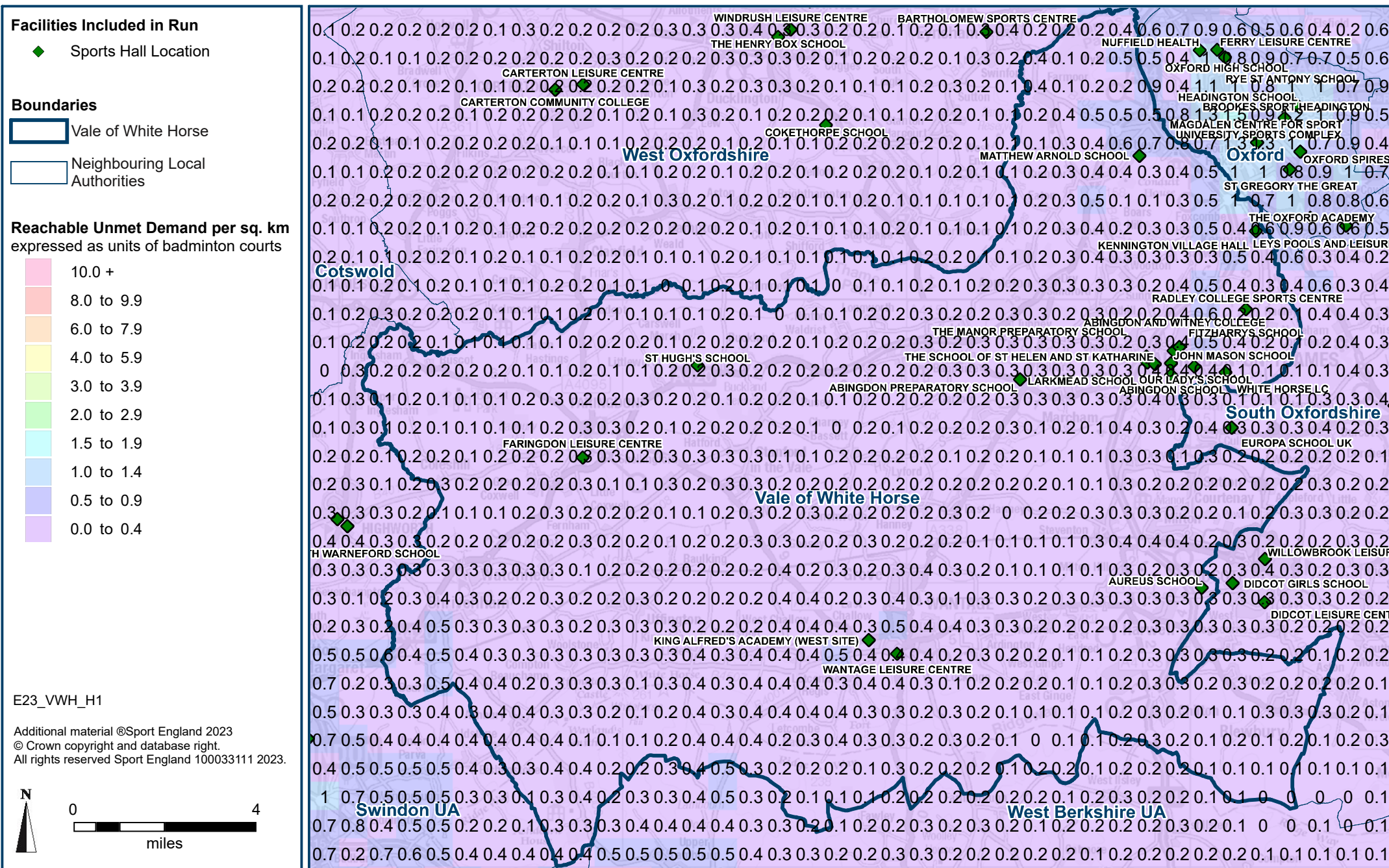
Run 2: Forward Projection (2041)

Run 3: Options for Changes to Supply Scenario 1 (2041)

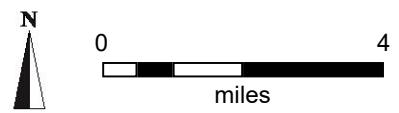
Facilities Planning Model - Halls Reachable Unmet Demand for Vale of White Horse

RUN 1: Existing Provision (2023)

Reachable unmet demand aggregated at 1km square grid, shown thematically (colours) and expressed in units of badminton courts (figure labels).



E23_VWH_H1
 Additional material ©Sport England 2023
 © Crown copyright and database right.
 All rights reserved Sport England 100033111 2023.



Facilities Planning Model - Halls Reachable Unmet Demand for Vale of White Horse

RUN 2: Forward Projection (2041)

Reachable unmet demand aggregated at 1km square grid, shown thematically (colours) and expressed in units of badminton courts (figure labels).

Facilities Included in Run

- ◆ Sports Hall Location
- ◆ New Sports Hall Location

Boundaries

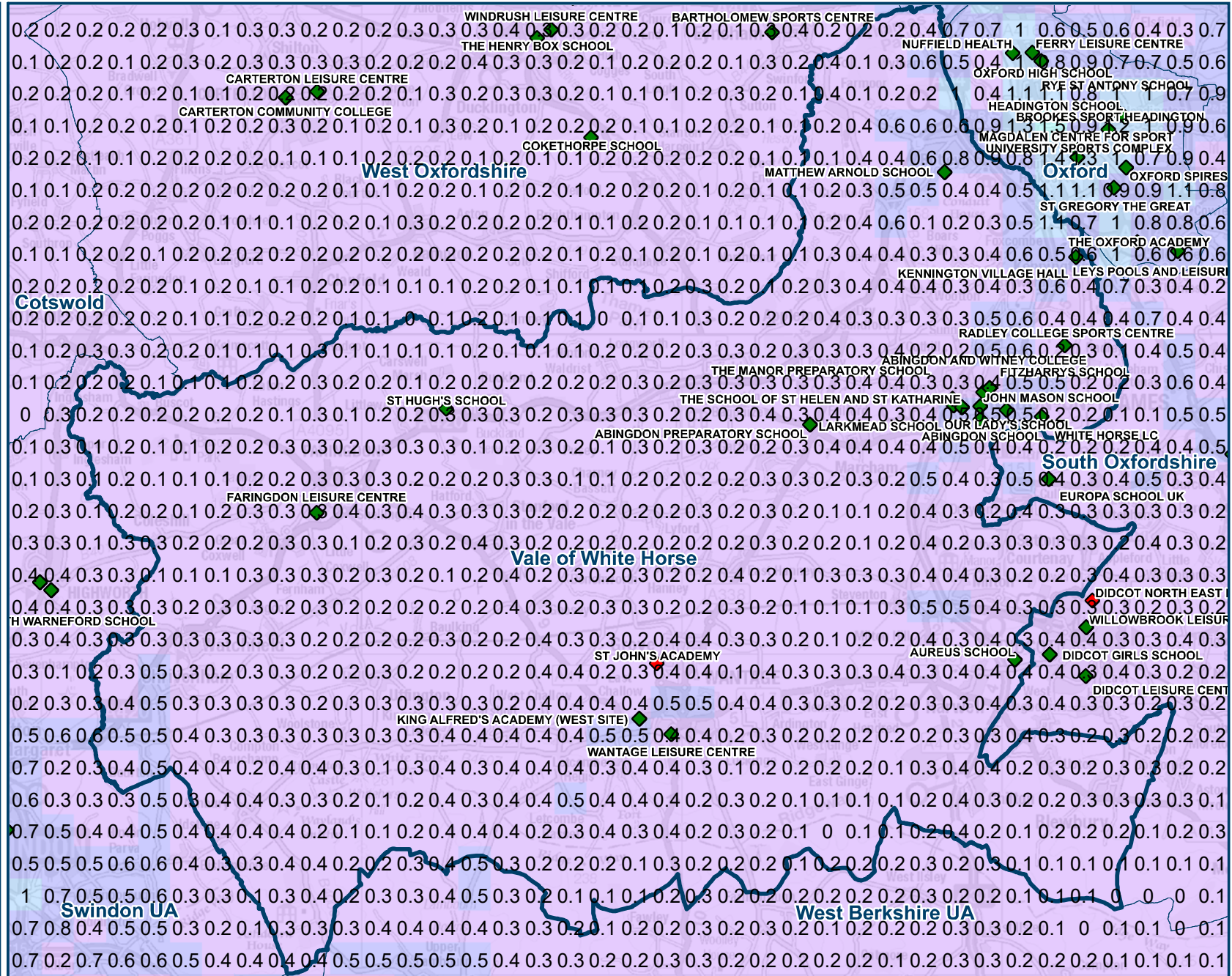
- Vale of White Horse
- Neighbouring Local Authorities

Reachable Unmet Demand per sq. km expressed as units of badminton courts

10.0 +
8.0 to 9.9
6.0 to 7.9
4.0 to 5.9
3.0 to 3.9
2.0 to 2.9
1.5 to 1.9
1.0 to 1.4
0.5 to 0.9
0.0 to 0.4

E23_VWH_H1

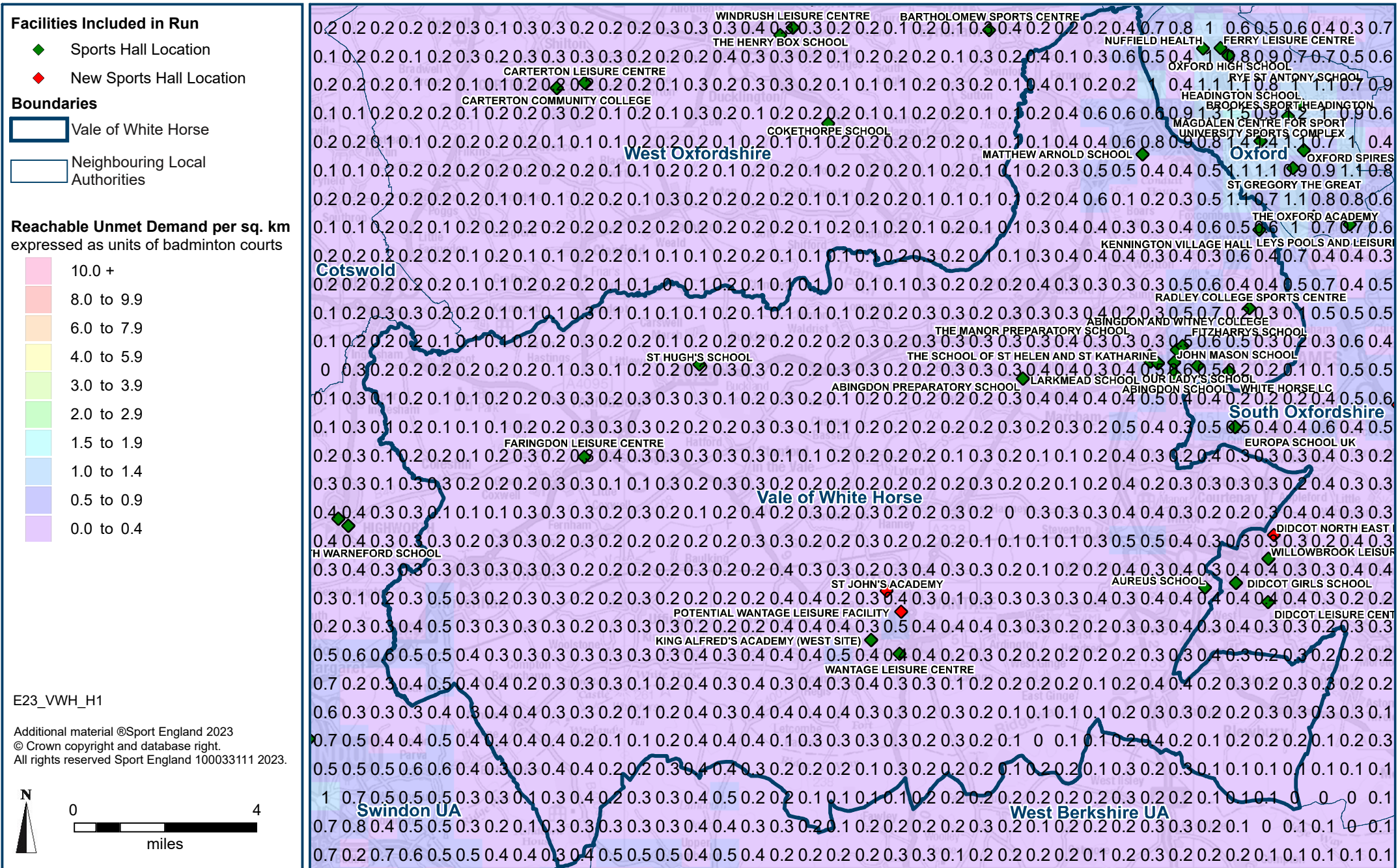
Additional material ©Sport England 2023
© Crown copyright and database right.
All rights reserved Sport England 100033111 2023.



Facilities Planning Model - Halls Reachable Unmet Demand for Vale of White Horse

RUN 3: Options for Changes to Supply Scenario 1 (2041)

Reachable unmet demand aggregated at 1km square grid, shown thematically (colours) and expressed in units of badminton courts (figure labels).



6. LOCAL SHARE

Run 1: Existing Provision (2023)

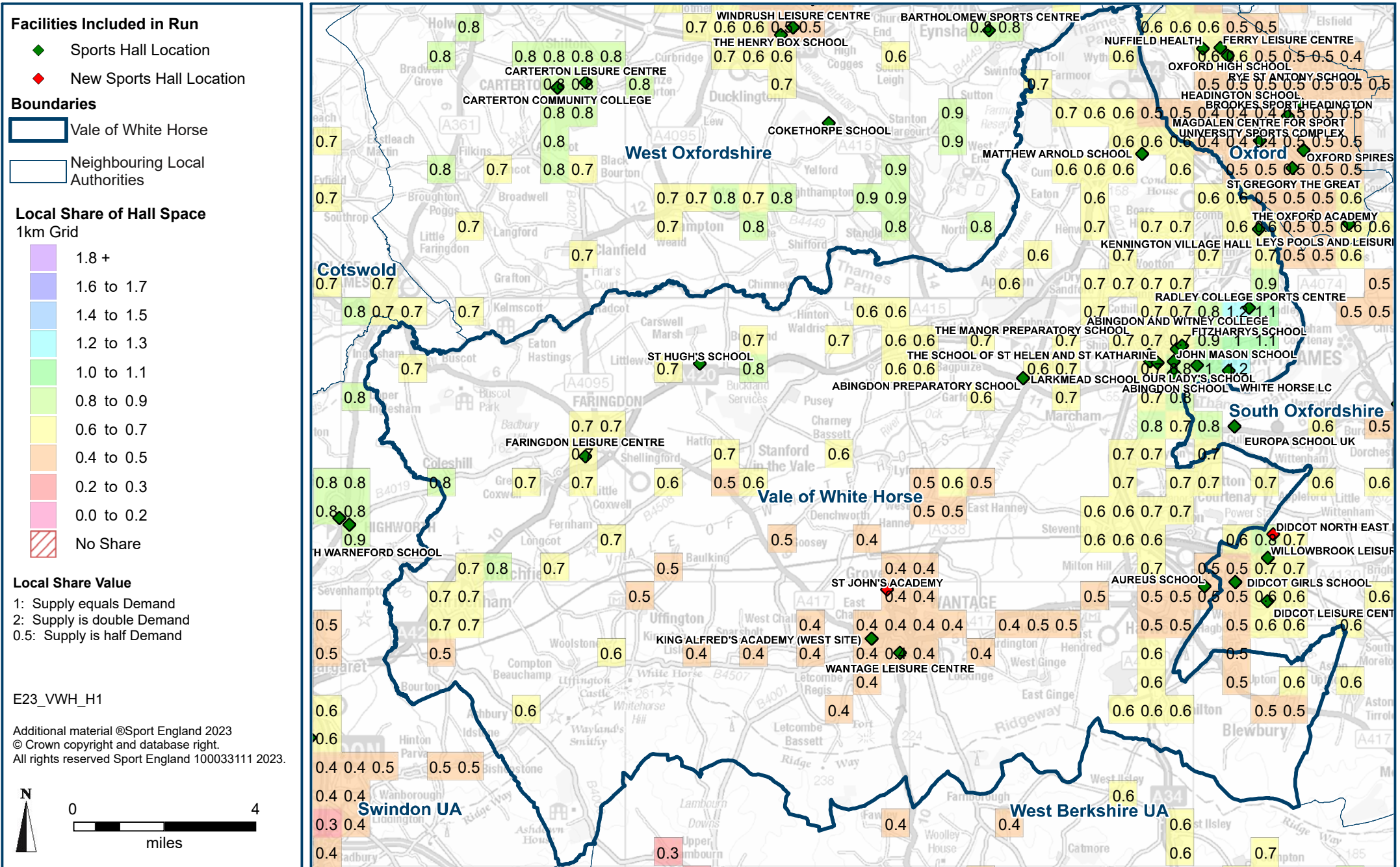
Run 2: Forward Projection (2041)

Run 3: Options for Changes to Supply Scenario 1 (2041)

Facilities Planning Model - Halls Local Share for Vale of White Horse

RUN 2: Forward Projection (2041)

Share of badminton courts divided by demand aggregated at 1km square (figure labels) and shown thematically (colours).



Facilities Planning Model - Halls Local Share for Vale of White Horse

RUN 3: Options for Changes to Supply Scenario 1 (2041)

Share of badminton courts divided by demand aggregated at 1km square (figure labels) and shown thematically (colours).

