

# **SUSTAINABLE BOTLEY**

**The Botley Energy Advice Project**



**SUSTAINABLE BOTLEY**

- A small voluntary group, based in Botley, just to the west of Oxford
- A member of the Oxfordshire CAGs network and of Communities for a Zero Carbon Oxford
- Working on energy, green spaces, 'bring and take'
- <https://sustainablebotley.uk/>

# The Energy Project

Two linked pieces of work:

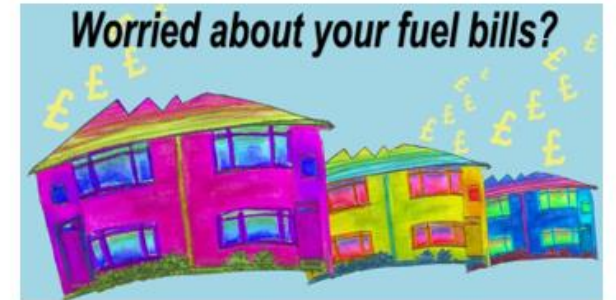
- **A first small project funded by North Hinksey Parish Council** to carry out energy assessments (linked to EPCs) for six representative houses in Botley.
- **The main project funded by Vale of White Horse D.C.**

Built on a successful home energy event '*Stay Warm, Save Energy*' in March 2022 and utilised some existing skills.

# The Vale-funded work

Our initial intentions:

- Training local people to offer home energy advice
- Helping people carry out “DIY” measures such as loft insulation
- Carrying out 50 home energy advice visits and advise homeowners how to stay warm & save energy
- Providing advice to all households on how to save energy and find more information
- Improving local awareness through enhanced communication



## Botley Energy Advice Day

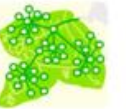
**Come along to find out how you can save energy  
and cut your bills**

- Hear about energy surveys of six typical Botley homes
- Short films on saving energy in Oxfordshire homes
- Exhibition
- Energy advisors to answer your questions.
- Practical tips and advice
- Tea and coffee – all welcome!

**Sat. Nov. 26th Seacourt Hall**

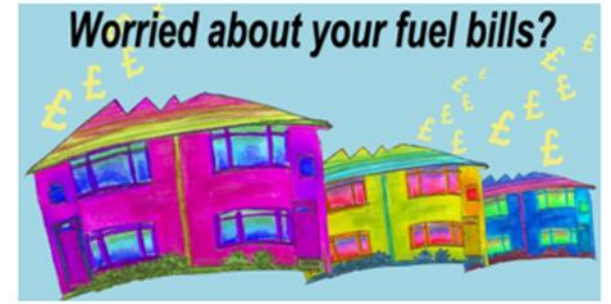
11am to 12.30pm and 1.30pm – 3pm  
(morning and afternoon sessions)

Organised by Sustainable Botley with support from  
Vale District Council and North Hinksey Parish Council.



# What we did

- Surveyed 8 homes (NHPC funding)
- Trained three local people on validated courses who are committed to continuing volunteer support
- Published 3 articles in the Sprout, our local newsletter
- Held a successful event in November 2022
- Engaged the local community, e.g., via parish council, Annual Parish Meeting, various community groups, including Senior Lunch Club
- Delivered a postcard to every household outlining what we are offering and inviting people to get in touch
- A report on the home energy assessments



## Botley Energy Advice Day

Come along to find out how you can save energy  
and cut your bills

- Hear about energy surveys of six typical Botley homes
- Short films on saving energy in Oxfordshire homes
- Exhibition
- Energy advisors to answer your questions.
- Practical tips and advice
- Tea and coffee – all welcome!

**Sat. Nov. 26th Seacourt Hall**

11am to 12.30pm and 1.30pm – 3pm  
(morning and afternoon sessions)

Organised by Sustainable Botley with support from  
Vale District Council and North Hinksey Parish Council.



# Two main audiences

- **People on low incomes – fuel poverty work**
- **People with money to spend / invest on retrofit**

# The Postcard

One side talking about energy costs and basic saving

## ARE YOU STRUGGLING TO PAY YOUR FUEL BILLS?

We can offer help here in Botley.

Are you paying too much?

Are you aware what grants and support are available?

Could you use less energy and still stay warm?

**Most homes can save 5-10% of your energy costs.**  
We can call or visit you to talk about your energy use and bills, and offer advice on getting financial support.

- Email us: **sustainablebotley@gmail.com**
- For more information visit:  
**www.sustainablebotley.uk**
- Call on **07421 083950** *(and leave a message)*



**SUSTAINABLE BOTLEY**

### SEE ALSO...

- For advice on saving energy and money go to:  
**bit.ly/Oxfordwinterwarmer**
- Better Housing Better Health  
**0800 107 0044** (FREEPHONE)
- Citizens Advice  
**0808 278 7909**



And one side  
talking about  
retrofit and  
improvements

## ARE YOU CONSIDERING HOME IMPROVEMENTS?

**If you want to invest in having a home that is warm and cheap to heat we can help you to:**

- Identify where heat is being lost
- Understand what would make your home fit for the future
- Find ways to cut energy waste, cold spots and mould
- Cut your 'carbon footprint'



**SUSTAINABLE BOTLEY**

Sustainable Botley is a local voluntary group. Our work on saving energy is supported by North Hinksey Parish Council and Vale of White Horse District Council.

**We can call or visit you. Our surveys and advice can help you to get started and find other support:**

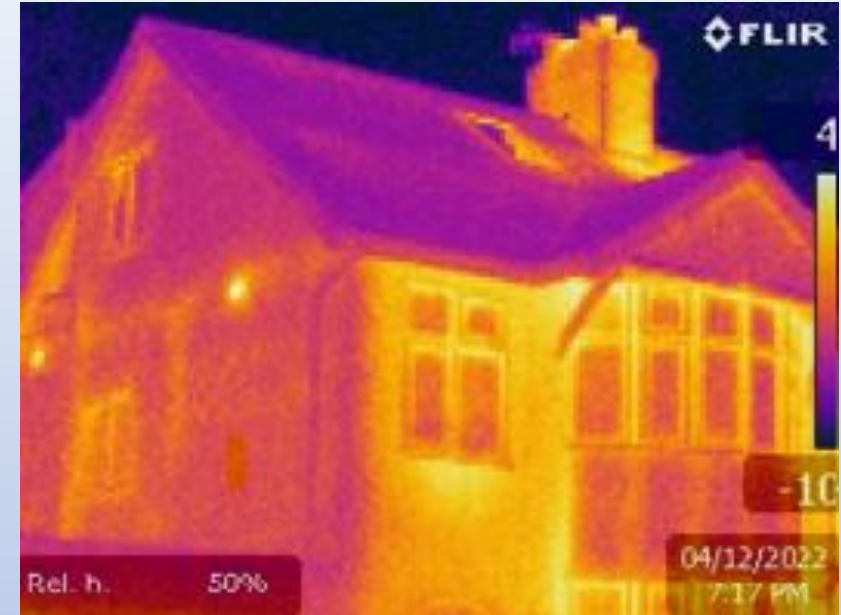
- For more information visit:  
**[www.sustainablebotley.uk](http://www.sustainablebotley.uk)**
- Email us: **[sustainablebotley@gmail.com](mailto:sustainablebotley@gmail.com)**
- Phone **07421 083950**  
*(and leave a message)*





# Some extra work:

- We did thermal imaging visits for a number of homes, during which we were able to show occupants where energy is being lost, and what they can do about it.
- We identified clearly that there is scope for many homes to consider switching heat pumps, whether or not there are already energy efficient, thus challenging conventional wisdom



# The report

This enabled us to characterise the energy challenges characteristic of houses typical in the parish and produce a report on these homes that considered their energy balances and the best possibilities for retrofitting.

## **Sustainable Botley**



### **Home Energy Assessments**

**An evaluation of energy use and energy saving opportunities  
in eight typical Botley homes**

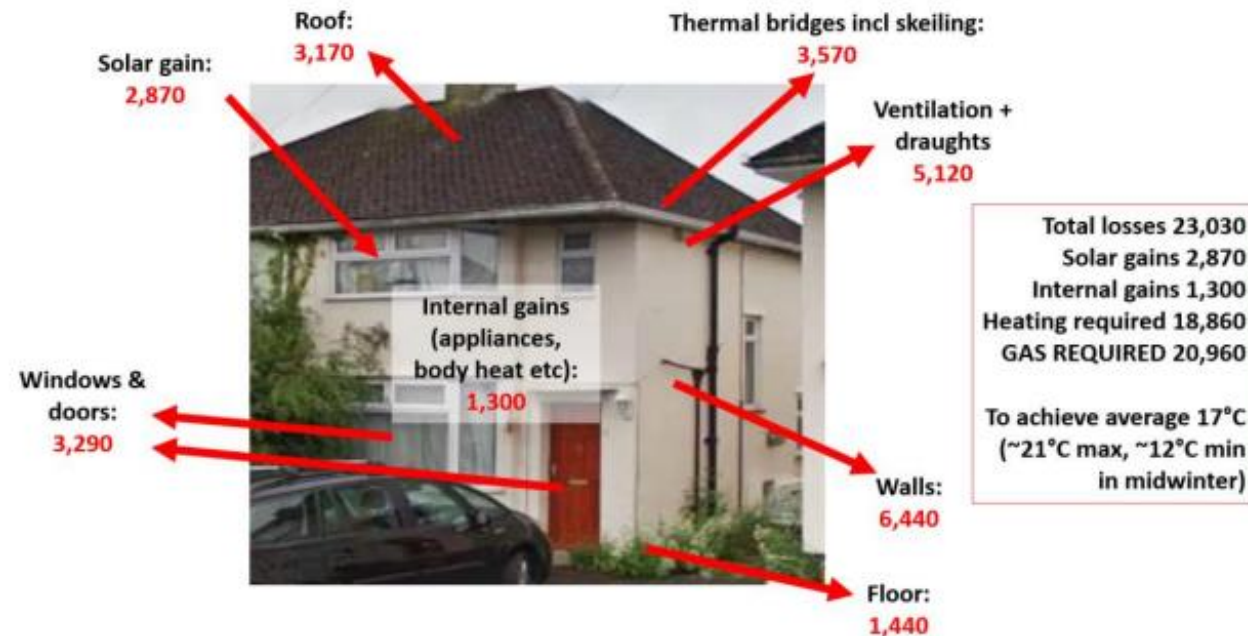
A report for Sustainable Botley by Laurie Michaelis

March 2023

## Heat balance

Central to calculating the heating requirement for a home, and to identifying where the main savings can be made, is the principle of the **heat balance**, which can be seen in the figure below. This is the balance for a 1930s 3-bedroom semi in Elms Rise.

### Heat balance – kWh/year



For this house it is clear that the biggest opportunities for saving energy are insulating the walls and improving airtightness. The loft is already insulated but additional insulation would make a significant difference at low cost. The windows and doors account for 14% of losses, but they are already double glazed. Replacing them with high performance triple glazing and insulated doors

# The learning

- Most interest in our work came from people with money to spend; less from low-income homes
- We identified scope for future work that can help to further our goals of helping our community reduce their carbon footprints, including:
  - An enthusiasm for retrofit advice within our community, which we intend to act on in future projects
  - Feedback that householders are thinking more seriously about heat pumps
  - Less interest from households on what simple/low cost actions can be undertaken to help them save energy

# Getting to the low-income homes

**We are not the only group facing this problem.** We will be working to:

- Work with existing organisations that actively engage with older / low income people and are trusted
- Help them understand and get what they are entitled to
- Engage with faith-based organisations
- Make links with social housing providers

# Next steps

- Continue to build our skills in engagement, retrofit, fuel poverty
- Develop better links with other local organisations
- Publicity now to start to get people active on energy saving this autumn
- Build further links with other groups working on these issues.

THANK YOU!

Chris Church [chrischurch@cooptel.net](mailto:chrischurch@cooptel.net)

